

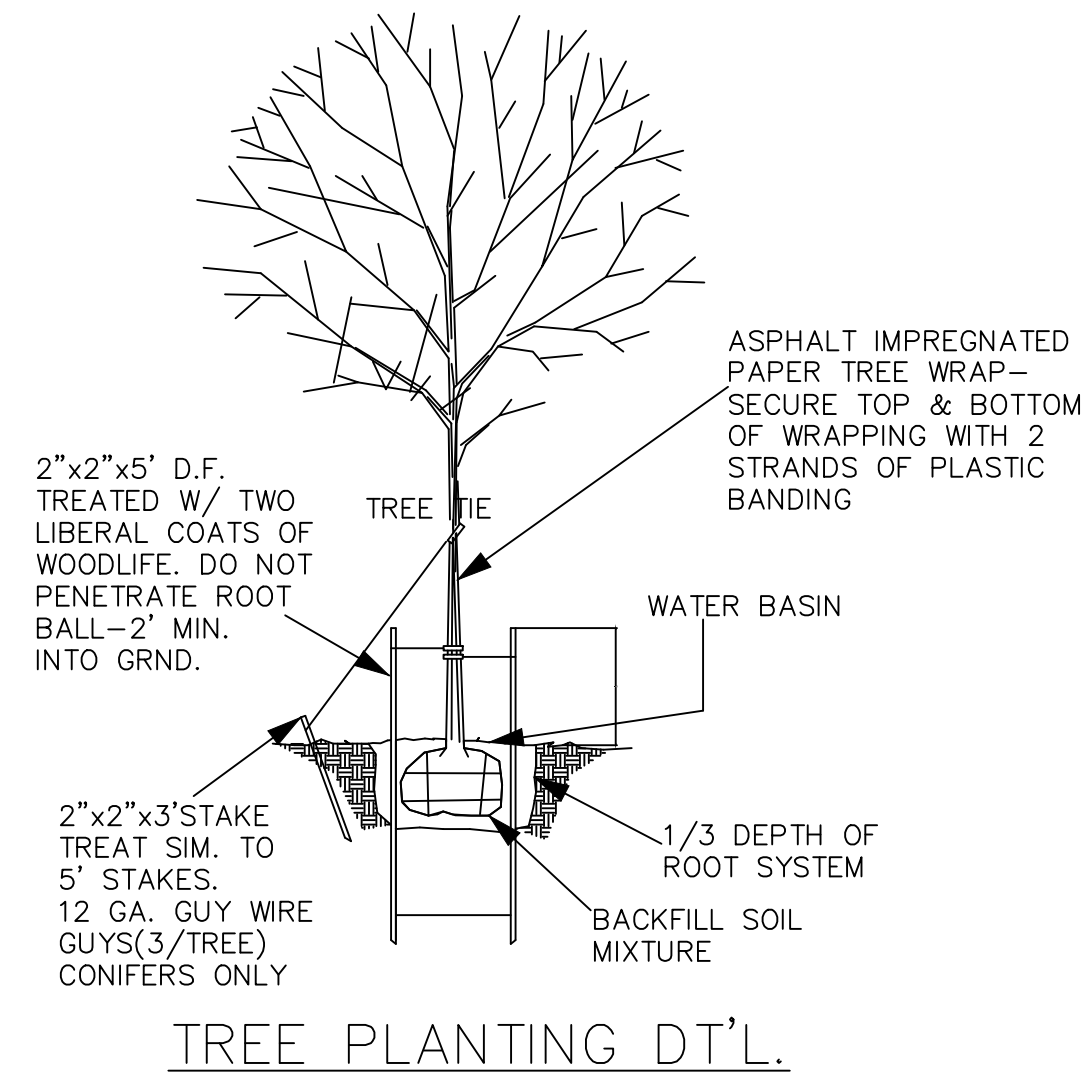
e-conolight
E-WRT09A-N50Z.ies
 Cree Lighting
 E-WRT09A-N50Z
 Econolight Wall Pack
 Single (Arm)

Luminaire Watts: 68 W
 Ballast/Driver Factor: 1.00
 Light Loss Factor: 1.00
 Total Proration Factor: 1.00
 Luminaire Lumens: 8532 lms

155 x 80 ft
 15 ft

Min: 0.19 fc ×
 Max/Avg: 9.8
 Avg: 1.0 fc
 Avg/Min: 5.5
 Max: 10 fc +
 Max/Min: 53

Version 1.0.0 © 2020-2023 Lighting Analysts, Inc.



STREET TREE LEGEND

SYMBOL	BOTANICAL/COMMON NAME	SIZE	QTY
	PRUNUS CERASIFERA THUNDERCLOUD MAPLE	2" cal.	5

ON-SITE TREE LEGEND

	CALOCEDRUS DECURRENS INCENSE CEDAR	6' ht.	9
	ACER RUBRUM 'BOWHALL' BOWHALL MAPLE	2" cal.	6

SHRUBS

	PRUNUS LAUROCERACUSUS 'OTTO' OTTO LUYKEN'S LAUREL	3 GAL.	25
--	--	--------	----

GROUND COVER

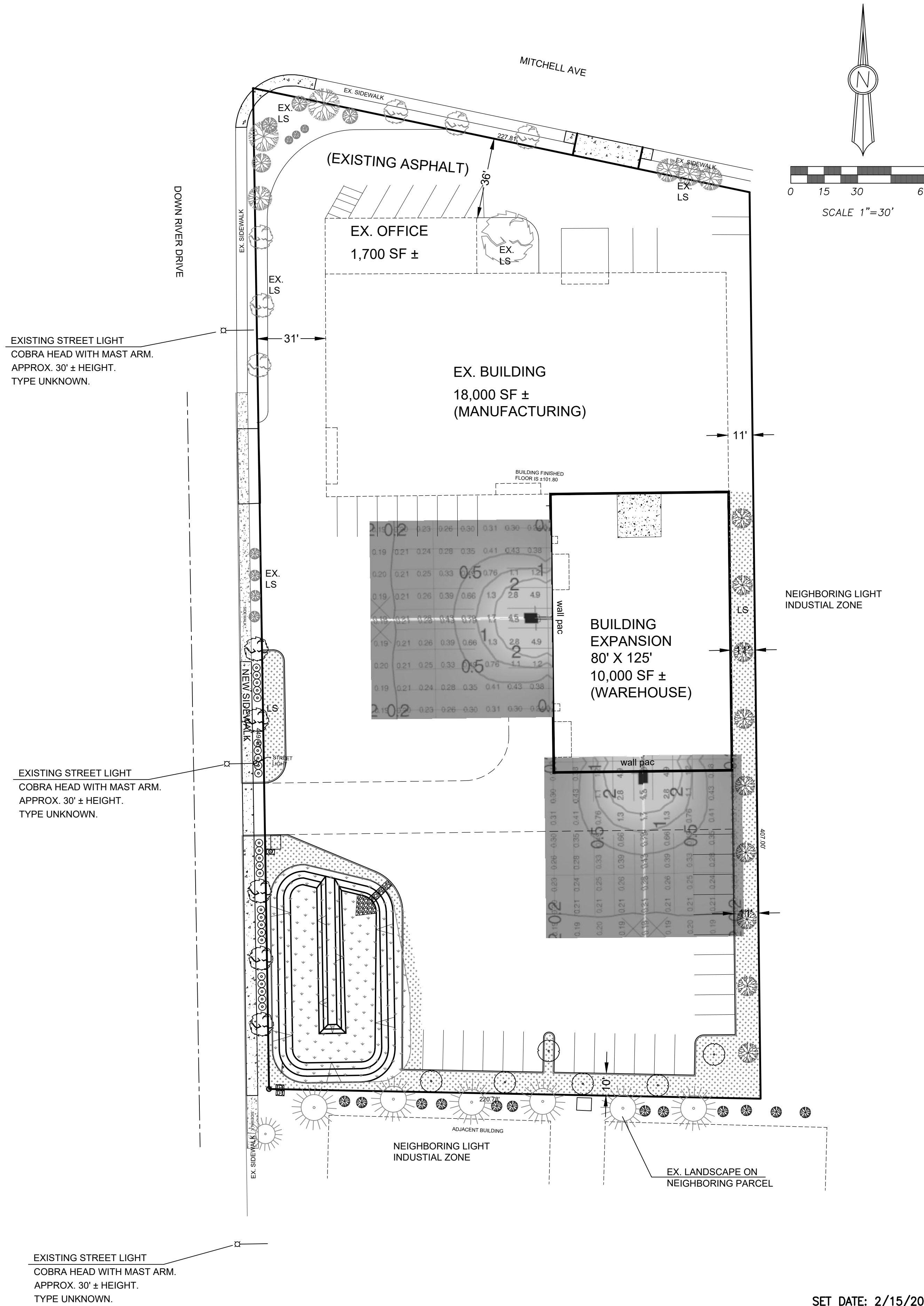
- TURF OR GROUND COVER PER OWNER
- STORMWATER FACILITY PLANTING (DETENTION POND):
Seed mix per table this sheet.

SITE STATISTICS

GROSS PARCEL AREA	69,696 SF / 1.60 AC
EXISTING LANDSCAPE AREA	2,612 SF / 0.06 AC
PROPOSED LANDSCAPE AREA	5,779 SF / 0.13 AC
TOTAL LANDSCAPE AREA / % OF SITE	8,391 SF / 0.19 AC / 12%

STORMWATER FACILITY SEED MIX

	% Weight	% Purity	% Germination
Dwarf tall fescue (several varieties) <i>Festuca arundinacea</i> var.	45	98	90
Dwarf perennial rye (Barclay) <i>Lolium perenne</i> var. <i>barclay</i>	30	98	90
Red fescue <i>Festuca rubra</i>	20	98	90
Colonial bentgrass <i>Agrostis tenuis</i>	5	98	90
Add One of the Following to Mix:	Lbs per Acre		
Poco barley <i>Hordeum vulgare</i> var. <i>Poco</i>	50		
Regreen wheat x wheatgrass hybrid <i>Triticum aestivum</i> x <i>Elytrigia elongata</i>	50		



REV	DATE	REVISION DESCRIPTION	DESIGNER	REVIEWER

**STATCO BUILDING EXPANSION
 PRELIMINARY STREET REPAIR PLAN**

675 MITCHELL AVE
 WOODLAND WA 98674

0 REVISION

6 / 6

SET DATE: 2/15/2024