

Plant Schedule

TREES	QTY	BOTANICAL / COMMON NAME	SIZE	MATURE CANOPY SF	TOTAL CANOPY SF
	4	Chamaecyparis nootkatensis 'Glauca Pendula' / Blue Weeping Nootka Cypress	6-8" Ht., B&B	50 sf	200 sf
	3	Lagerstroemia indica / Crape Myrtle	2" Cal., B&B	115 sf	339 sf
	4	Malus floribunda 'Prairifire' / Flowering Crabapple	2" Cal., B&B	314 sf	1256 sf
	4	Nyssa sylvatica 'Wildfire' / Wildfire Tupelo	2" Cal., B&B	962 sf	3,848 sf
	5	Zelkova serrata / Sawleaf Zelkova	2" Cal., B&B	962 sf	4810 sf
SHRUBS	QTY	BOTANICAL / COMMON NAME	SIZE	MATURE CANOPY SF	TOTAL CANOPY SF
	14	Abelia x grandiflora 'Kaleidoscope' / Kaleidoscope Glossy Abelia	5 Gal.	5 sf	70 sf
	54	Abelia x grandiflora 'Sherwoodii' / Sherwood Glossy Abelia	5 Gal.	10 sf	540 sf
	3	Azalea x 'Mother's Day' / Mother's Day Azalea	5 Gal.	7 sf	21 sf
	10	Berberis thunbergii 'Crimson Pygmy' / Crimson Pygmy Japanese Barberry	5 Gal.	7 sf	70 sf
	65	Euonymus japonicus / Japanese Euonymus	5 Gal.	12	780 sf
	1	Lonicera pileata / Privet Honeysuckle	5 Gal.	12 sf	12 sf
	42	Nandina domestica 'Firepower' / Firepower Heavenly Bamboo	5 Gal.	3 sf	126 sf
	3	Nandina domestica 'Gulf Stream' TM / Gulf Stream Heavenly Bamboo	5 Gal.	7 sf	21 sf
	17	Prunus laurocerasus 'Mount Vernon' / Mount Vernon English Laurel	5 Gal.	20 sf	340 sf
	16	Rhaphtolepis umbellata 'Minor' / Yedda Hawthorn	5 Gal.	12 sf	192 sf
	9	Sarcococca confusa / Sweetbox	5 Gal.	7 sf	63 sf
	15	Spiraea japonica 'Goldmound' / Goldmound Japanese Spirea	5 Gal.	12 sf	180 sf
	15	Vaccinium ovatum / Evergreen Huckleberry	5 Gal.	12 sf	180 sf
	4	Weigela florida 'Alexandra' TM / Wine & Roses Weigela	5 Gal.	12 sf	48 sf
GRASSES / PERENNIALS	QTY	BOTANICAL / COMMON NAME	SIZE	MATURE CANOPY SF	TOTAL CANOPY SF
	6	Hakonechloa macroa / Japanese Forest Grass	1 Gal.	5 sf	30 sf
GROUND COVERS	QTY	BOTANICAL / COMMON NAME	SIZE	SPACING	SF
	85 (502 sf)	Arctostaphylos uva-ursi 'Massachusetts' / Massachusetts Manzanita	1 Gal.	30" o.c.	428 sf
	47 (181 sf)	Fragaria virginiana / Virginia Strawberry	4" Pot	24" o.c.	181 sf
	251 (239 sf)	Pachysandra terminalis 'Green Sheen' / Green Sheen Japanese Spurge	4" Pot	12" o.c.	239 sf
	29 (415 sf)	Rubus calycinoides 'Emerald Carpet' / Emerald Carpet Creeping Raspberry	1 Gal.	48" o.c.	279 sf
	8,169 sf	ProTime 301 Water Smarter Fescue or Equal	Seed @ Rate of 10 lbs per 1000 sf		4113 sf
	390 sf	Stormwater Facility Plantings to be Determined	N/A	N/A	

*GROUND COVER SQUARE FOOTAGE DOES NOT INCLUDE QUANTITIES IN ROW.

Preliminary Planting Notes:

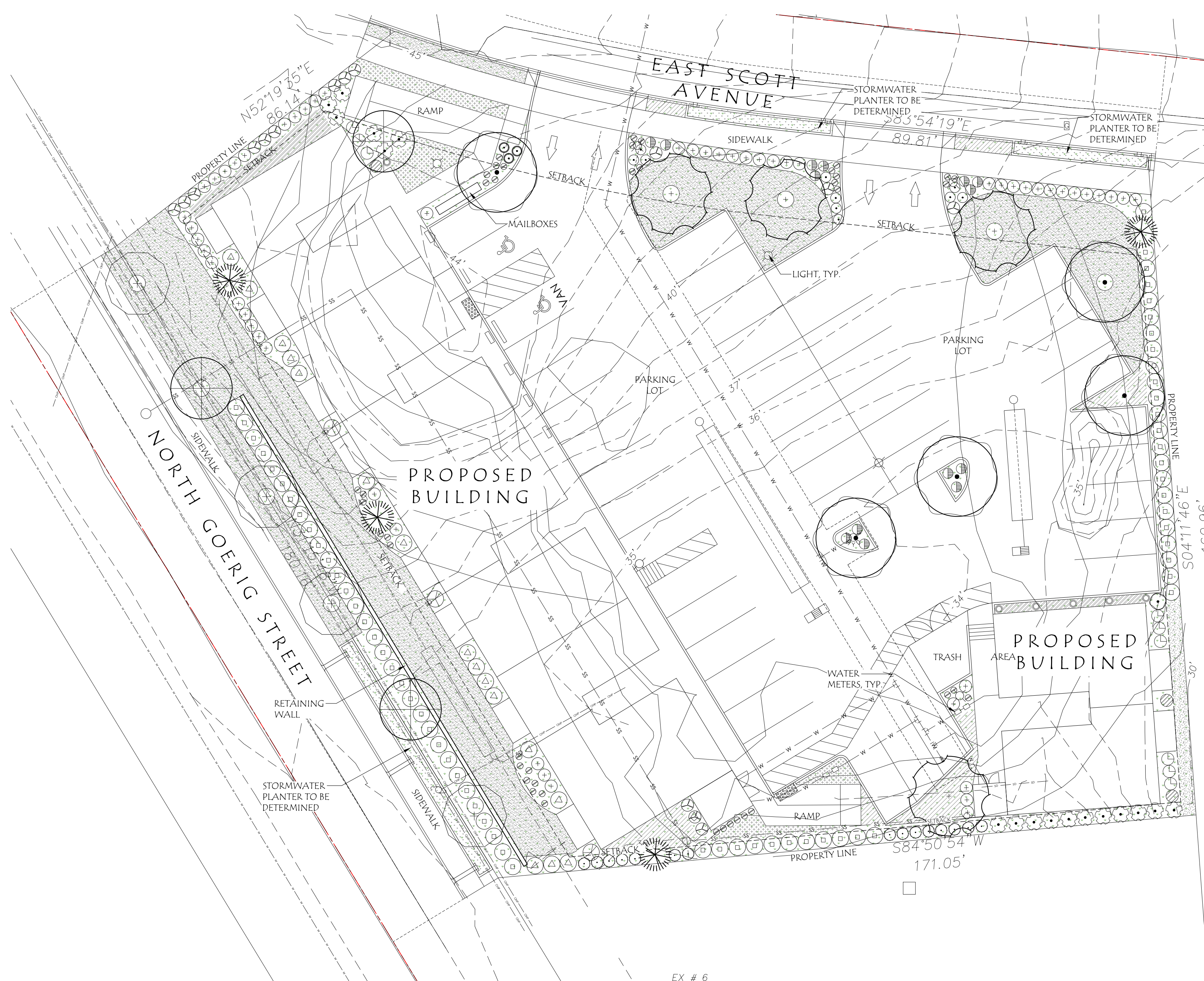
- THE LANDSCAPE CONTRACTOR IS TO THOROUGHLY REVIEW THE SITE. IF THERE ARE ANY DISCREPANCIES BETWEEN THE PLAN AND EXISTING CONDITIONS THE LANDSCAPE ARCHITECT IS TO BE IMMEDIATELY NOTIFIED.
- IF THE LANDSCAPE CONTRACTOR STARTS WORK BEFORE SITE CONDITIONS ARE READY, THEY WILL BE RESPONSIBLE FOR ANY ADDITIONAL COSTS RELATING TO THE CONDITION.
- PLANT MATERIALS SHALL BE FREE OF DISEASE, INJURY, AND INSECT INFESTATION. UNHEALTHY OR DAMAGED PLANTS SHALL BE REPLACED BY LANDSCAPE CONTRACTOR. ALL PLANT MATERIAL SHALL FOLLOW THE CURRENT AMERICAN STANDARD FOR NURSERY STOCK PUBLICATIONS INCLUDING ANSI A300 AND ANSI Z60.
- PLANTER BEDS: ALL PLANTER BEDS SHALL HAVE A MINIMUM DEPTH OF 8" WORKABLE TOPSOIL, COMPACTED AT A MAXIMUM OF 85% STANDARD PROCTOR MAXIMUM DRY DENSITY. TOPSOIL SHALL BE OVER ROCK-FREE SUBGRADE. SUBGRADE TO BE RIPPED AND TILLED TO 6" DEPTH AND REMOVE ALL DEBRIS 2" OR LARGER. SMALL PLANTER AREAS MAY REQUIRE REMOVAL OF COMPACTED SOIL, ROCK, GRAVEL TO AT LEAST 18" DEEP. LOOSEN AND AMEND SOIL BEFORE REPLACING IN 6" LIFTS TO FINISH GRADE.
- TOPSOIL MIX: AMEND EXISTING SOIL IN-SITU OR STOCK PILE SOIL ON SITE. IMPORT TOPSOIL ONLY AS NECESSARY.
- SOIL AMENDMENTS: ADD A MINIMUM OF 3" CLEAN, MATURE COMPOST TO TOPSOIL, TILL IN, FOR ALL PLANTER BEDS.
- PLANTING: VERIFY SOIL IS APPROPRIATELY DRY FOR DIGGING. SEE DETAILS THIS SHEET FOR HOLE DEPTH, WIDTH AND BACKFILL. DEEP WATER IMMEDIATELY AFTER PLANTING.
- MOUND PLANTING BED AREAS 3% FOR POSITIVE DRAINAGE AND AESTHETICS. SLOPE AWAY FROM BUILDINGS.
- BARK MULCH: SPREAD 2" MAX. DEPTH AGED FIR MULCH IN ALL PLANTER BEDS AND OPEN LANDSCAPE AREAS. KEEP MULCH AWAY FROM PLANT BASE.
- FERTILIZER: DO NOT USE ADDITIONAL FERTILIZERS ON NEWLY PLANTED TREES FOR FIRST YEAR.
- LAWN: PROVIDE 48" DIAMETER LAWN CUT-OUTS AROUND ALL TREES. MULCH CUT-OUTS, KEEP MULCH AT LEAST 4" AWAY FROM BASE OF TREE. KEEP LAWN 12" FROM FENCES AND BUILDINGS. MULCH AREAS AT FENCE AND BUILDING.
- PLANT QUANTITIES SHOWN ARE INTENDED TO ASSIST THE CONTRACTOR IN EVALUATING THEIR OWN TAKE-OFFS. IF THERE IS A DISCREPANCY BETWEEN PLANT QUANTITIES AND SYMBOLS SHOWN, USE THE LARGER OF THE TWO AMOUNTS. CONTRACTOR IS RESPONSIBLE FOR ALL FINAL QUANTITIES.

Site Information

SITE SF: 37,498 SF
 LANDSCAPE SF: 9,592 SF (26%)
 PLANT COVERAGE:
 GROUND COVER: 5,240 SF
 NON-LIVING GROUND COVER:
 1709 SF EXPOSED MULCH
 TREE CANOPY AND SHRUB AREA:
 10,453 SF TREES / 2,643 SF SHRUBS
 TOTAL: 13,096 SF
 LANDSCAPE SETBACK AREAS:
 FRONT: 1,658 SF
 SIDES: 465 SF AND 2,953 SF
 BACK: 600 SF
 OTHER LANDSCAPE: 1,510 SF
 PARKING REQUIREMENTS:
 TOTAL PARKING AREA: 16,013 SF
 PARKING LANDSCAPE: 2,408 SF
 1 TREE PER 5 PARKING SPACES
 45 SPACES = 9 TREES REQUIRED

General Notes:

- DRAWINGS NOT FOR CONSTRUCTION. PRIOR TO CONSTRUCTION CONTRACTOR TO VERIFY ALL UTILITIES AND EASEMENTS AND NOTIFY LANDSCAPE ARCHITECT OF CONFLICTS.
- SEE CIVIL DRAWINGS FOR SITE PLAN GRADING AND UTILITIES.
- STREET TREES SELECTED FROM WOODLAND APPROVED STREET TREE LIST FOR TREES WITH LOW RATES OF BIOGENIC VOGS AND OVERHEAD LINES. NO TREES PROPOSED ON EAST SCOTT AVENUE DUE TO STORMWATER FACILITIES AND NARROW PLANTER STRIP.
- SITE INFORMATION AND PLANT SCHEDULE, SEE THIS SHEET.
- IRRIGATION TO BE AN AUTOMATIC UNDERGROUND SYSTEM DESIGN BUILT BY THE LANDSCAPE CONTRACTOR.

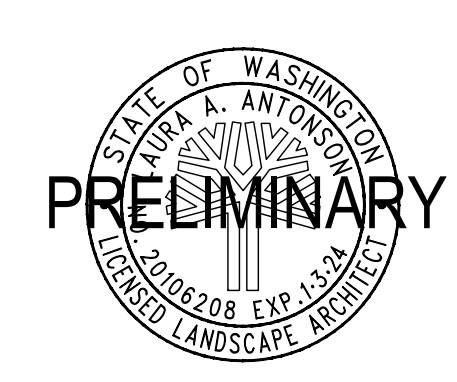


Laurus Designs, LLC

1012 Pine Street
 Silverton, Oregon
 503.784.6494

Goerig Apartments

1776 N. Goerig Street
 Woodland, Washington



PRELIMINARY PLANTING PLAN

SCALE: 1"=16'-0"
 0' 8' 16' 32'
 SCALE

June 27th, 2022

REVISIONS			
#	DATE	NOTES	INITIALS

L1.1

SHEET 1 OF 1

PROJECT #: 1440R