

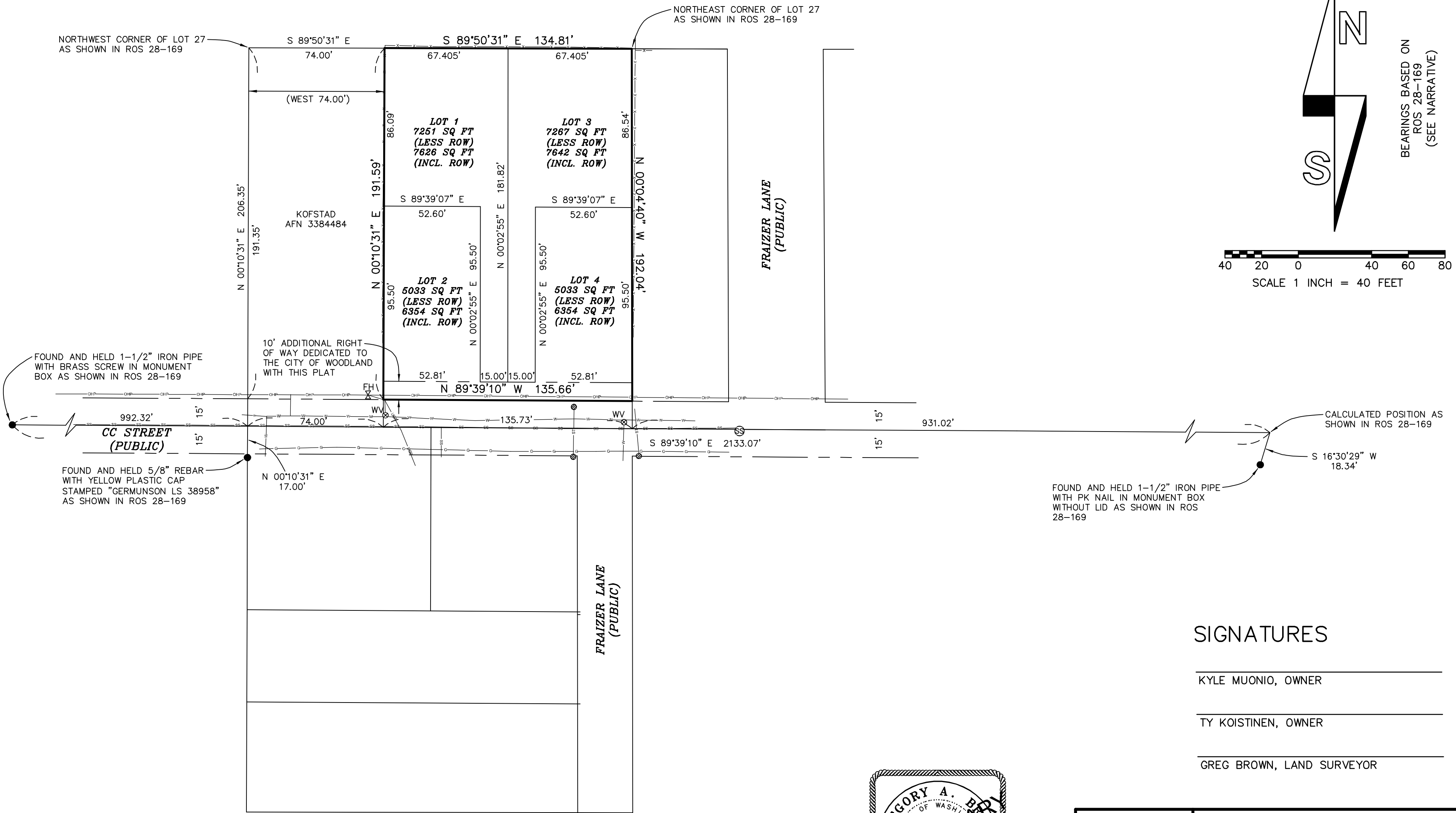
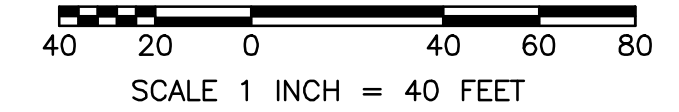
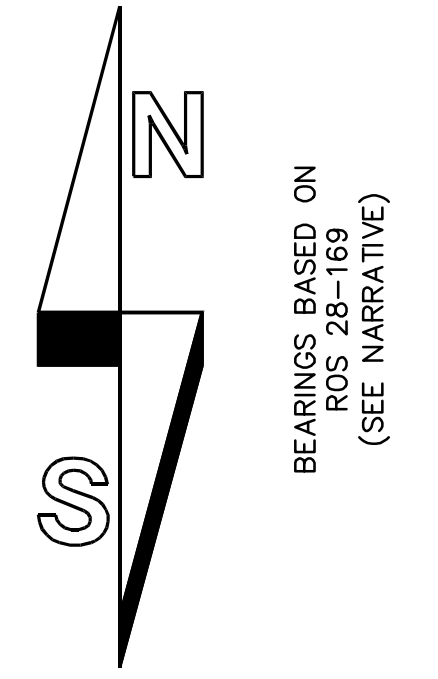
LEGEND:

- INDICATES MONUMENT FOUND AS NOTED
- ⊙ INDICATES CATCH BASIN
- ⊕ INDICATES SANITARY SEWER MANHOLE
- FH X INDICATES FIRE HYDRANT
- WV ⊙ INDICATES WATER VALVE
- OP— INDICATES OVERHEAD POWER LINE
- SS— INDICATES SANITARY SEWER LINE
- W— INDICATES WATER LINE
- G— INDICATES GAS LINE
- UGP— INDICATES UNDER GROUND POWER LINE
- ST— INDICATES STORM SEWER LINE

DEED REFERENCE
 STATUTORY WARRANTY DEED
 HALL
 TO
 KT WEST, LLC
 AFN 3733640
 (04/28/2023)

KT WEST, LLC SHORT SUBDIVISION

IN A PORTION OF LOT 27 IN THE
 "MRS. IDA E. PARENT'S ACRE TRACTS"
 (3-159), IN THE S. & M. BOZARTH DLC
 IN THE NW 1/4 NE 1/4 OF
 SECTION 24, T5N, R1W, W.M.
 CITY OF WOODLAND,
 COWLITZ COUNTY, WA.



PARCEL NO: 50383

SIGNATURES

 KYLE MUONIO, OWNER

 TY KOISTINEN, OWNER

 GREG BROWN, LAND SURVEYOR



SCALE: 1"=40'
 JOB NO. 23-070
 DATE: 1-29-2024
 CALC BY: GAB
 DRAWN BY: GAB
 CHECKED BY: GAB
 SHEET 1 OF 1

BROWN
 SURVEYING PLLC
 PO BOX 414
 AMBOY, WA 98601
 360-600-0846
 ebrownsurveying@gmail.com