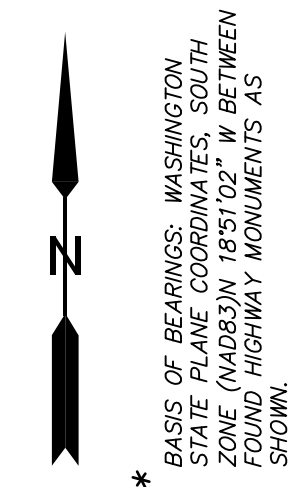
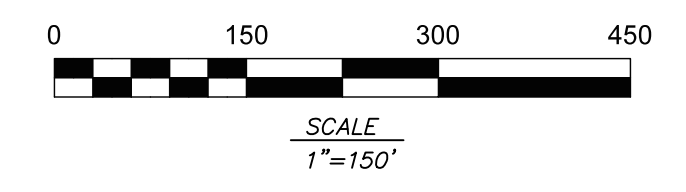


EXISTING CONDITIONS SURVEY  
for  
LOGAN'S LANDING

IN A PORTION OF THE NE 1/4 OF SECTION 13  
T5N, R1W, WILLAMETTE MERIDIAN  
COWLITZ COUNTY, WA

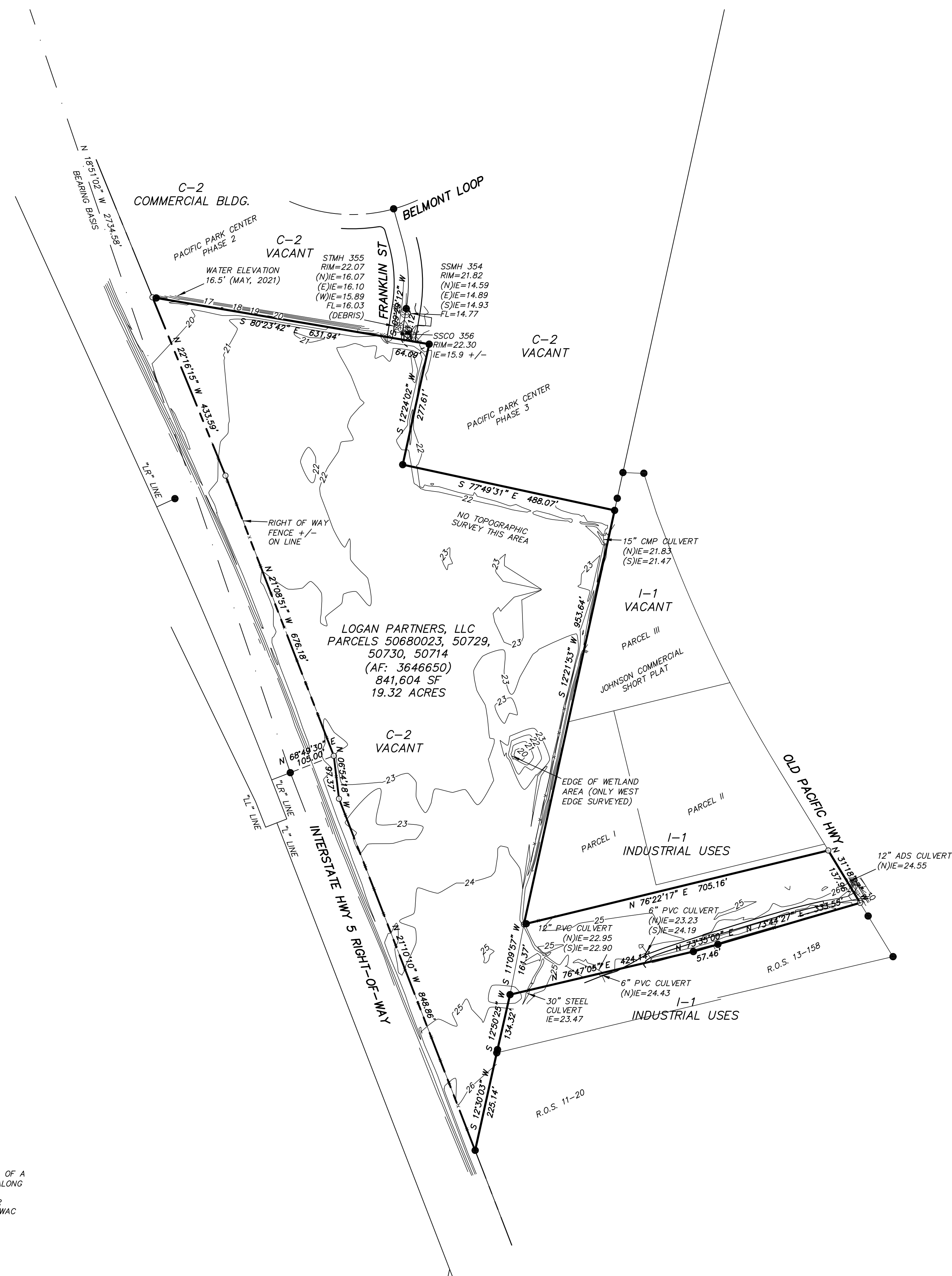


\* BASIS OF BEARINGS: WASHINGTON STATE PLANE COORDINATES, SOUTH ZONE (NAD83) N 18°51'02" W BETWEEN FOUND HIGHWAY MONUMENTS AS SHOWN.



LEGEND

- FOUND MONUMENT AS NOTED (VISITED MAY, 2021)
- CALCULATED POSITION
- ⊕ SANITARY MANHOLE
- ⊖ STORM MANHOLE
- ⊗ FIRE HYDRANT
- ⊕ WATER VALVE
- SIGN
- FENCE
- AF: AUDITOR'S FILE NUMBER
- RIGHT OF WAY



DEED REFERENCES

AF: 3646650 (SAXONY PACIFIC, LLC TO LOGAN PARTNERS, LLC)  
(SEE ADDITIONAL DEED REFERENCES BELOW)

SURVEY REFERENCES

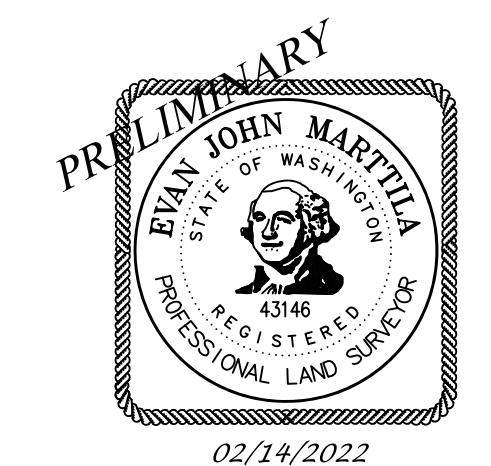
- VOLUME 1, PAGE 62 (PACIFIC PARK CENTER PHASE 3)
- VOLUME 1, PAGE 45 (PACIFIC PARK CENTER PHASE 3)
- VOLUME 1, PAGE 34 (PACIFIC PARK CENTER PHASE 2)
- VOLUME 13, PAGE 158 (1994 SURVEY BY DUNCAN)
- VOLUME 11, PAGE 20 (1991 SURVEY BY BARBIER)
- VOLUME 6, PAGE 26 (JOHNSON COMMERCIAL SHORT PLAT)
- VOLUME 8, PAGE 135 (1988 SURVEY BY LAWSON)
- VOLUME 4, PAGE 98 (1980 SURVEY BY GIBBS)
- VOLUME 3, PAGE 70 (1988 SURVEY BY HAGEDORN)
- VOLUME 2, PAGE 332 (1978 SURVEY BY HAGEDORN)
- VOLUME 1, PAGE 384 (1946 SURVEY BY GIBBS)

GENERAL NOTES

- 1). DATE OF SURVEY: DECEMBER 30, 2020 TO JULY 13, 2021
- 2). CONTOUR INTERVAL SHOWN IS 1.0'
- 3). BOUNDARY INFORMATION IS PER RECENT BOUNDARY CALCULATIONS/ FIELD SURVEY AND ALSO FROM PRIOR SURVEYS OF RECORD (SEE SURVEY REFERENCE LIST).
- 4). SOME OR ALL OF THE UNDERGROUND UTILITIES SHOWN HEREON WERE LOCATED FROM FIELD TIES TO SURFACE PAINT MARKS BY RESPONDING UTILITY LOCATE COMPANIES. THE UTILITY LOCATES WERE REQUESTED BY NORTHERN LAND SURVEYING ON APRIL 14, 2021 FOR THE PURPOSE OF PERFORMING AN EXISTING CONDITIONS SURVEY. UTILITY LOCATE REQUEST IS REFERENCED BY TICKET No. 21148562. NORTHERN LAND SURVEYING LLC MAKES NO WARRANTIES TO ANY UNDERGROUND UTILITIES WHETHER SHOWN HEREON OR NOT.
- 5). HORIZONTAL DATUM: DRAWING COORDINATES ARE ON AN APPROXIMATE STATE PLANE COORDINATE SYSTEM. BASIS OF BEARINGS WASHINGTON STATE PLANE COORDINATE SYSTEM, SOUTH ZONE (NAD83) N 18°51'02" W BETWEEN FOUND MONUMENTS AS SHOWN.
- 6). VERTICAL DATUM: NAVD 88, PER WSDOT BENCHMARK NO. 4081. FOUND STAINLESS STEEL ROD IN LANDSCAPE ON THE SOUTH SIDE OF THE SOUTH ENTRANCE TO RODEWAY INN. PUBLISHED ELEVATION= 30.066 FEET.

NARRATIVE / PROCEDURE

THE PURPOSE OF THIS SURVEY WAS TO PROVIDE AN EXISTING CONDITIONS SURVEY OF A PORTION OF THE LOGAN PARTNERS, LLC TRACTS AS SHOWN. FIELD SURVEYS CONSISTED OF A COMBINATION OF GPS OBSERVATIONS (DOUBLE TIED) AND RANDOM TRAVERSE METHODS ALONG WITH RADIAL TIES; USING A 5-SECOND TRIMBLE S6 "TOTAL STATION" INSTRUMENT AND ELECTRONIC DATA COLLECTOR. RADIAL TIES WERE MADE TO EXISTING PROPERTY CORNER MONUMENTS AS SHOWN. THE ABOVE MENTIONED TRAVERSE MET THE REQUIREMENTS IN WAC 332-130-090.



<b>NORTHERN</b> LAND SURVEYING LLC  P.O. Box 2017 Battle Ground, WA 98604 360.553.5992	EXISTING CONDITIONS SURVEY for LOGAN'S LANDING		
	Drawn By: DWU Checked By: EJM	Date: 02/14/2022 Scale: 1"=150'	Job No. 2397 Sheet: 1 OF 1