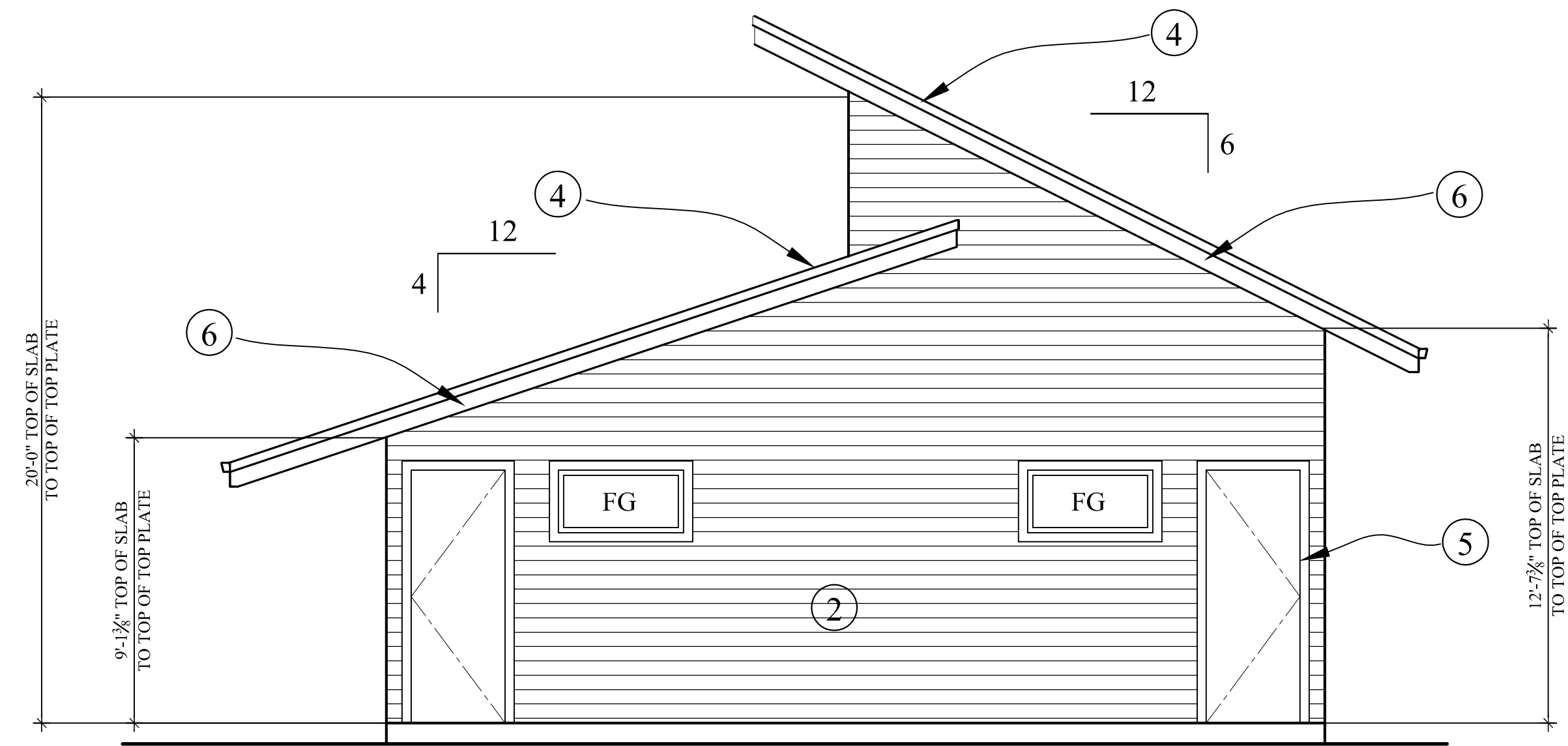


NORTH EAST EXTERIOR ELEVATION

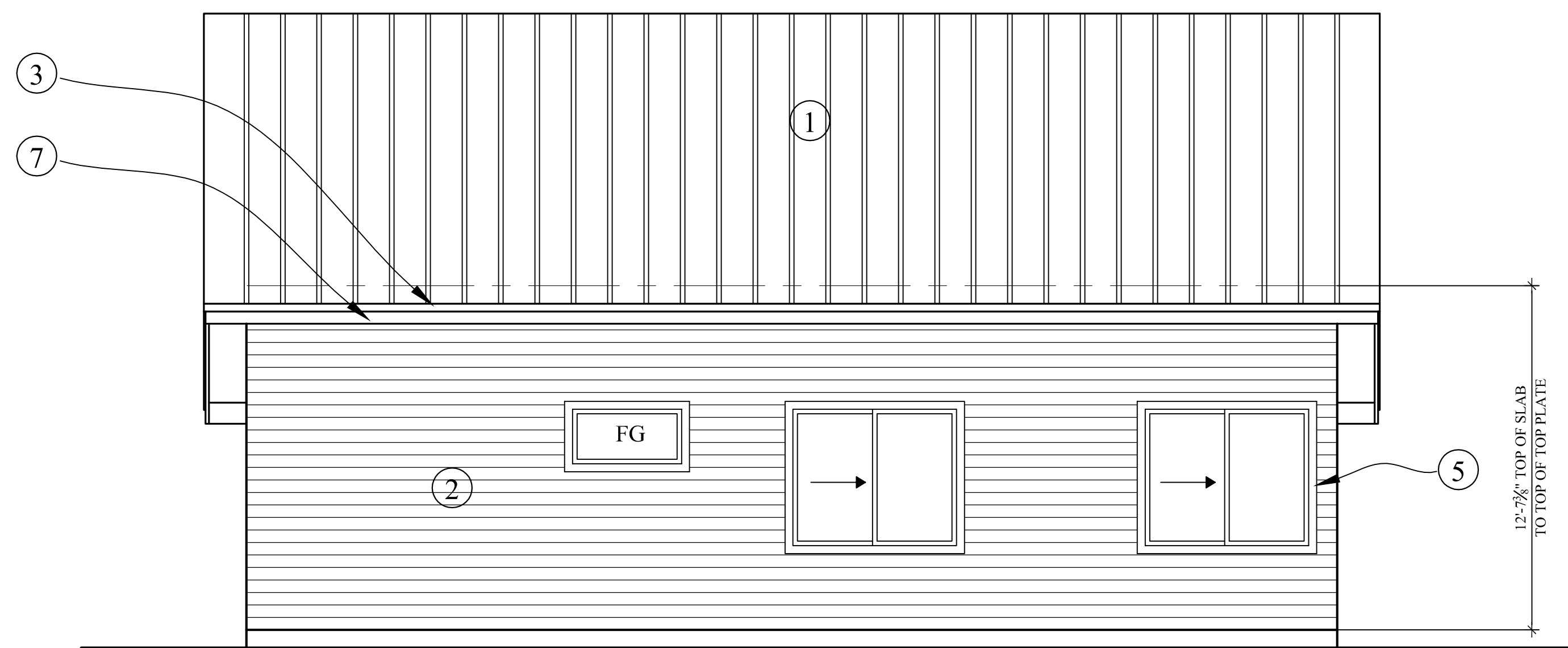
SCALE: 1/4" = 1'-0"



NORTH WEST EXTERIOR ELEVATION

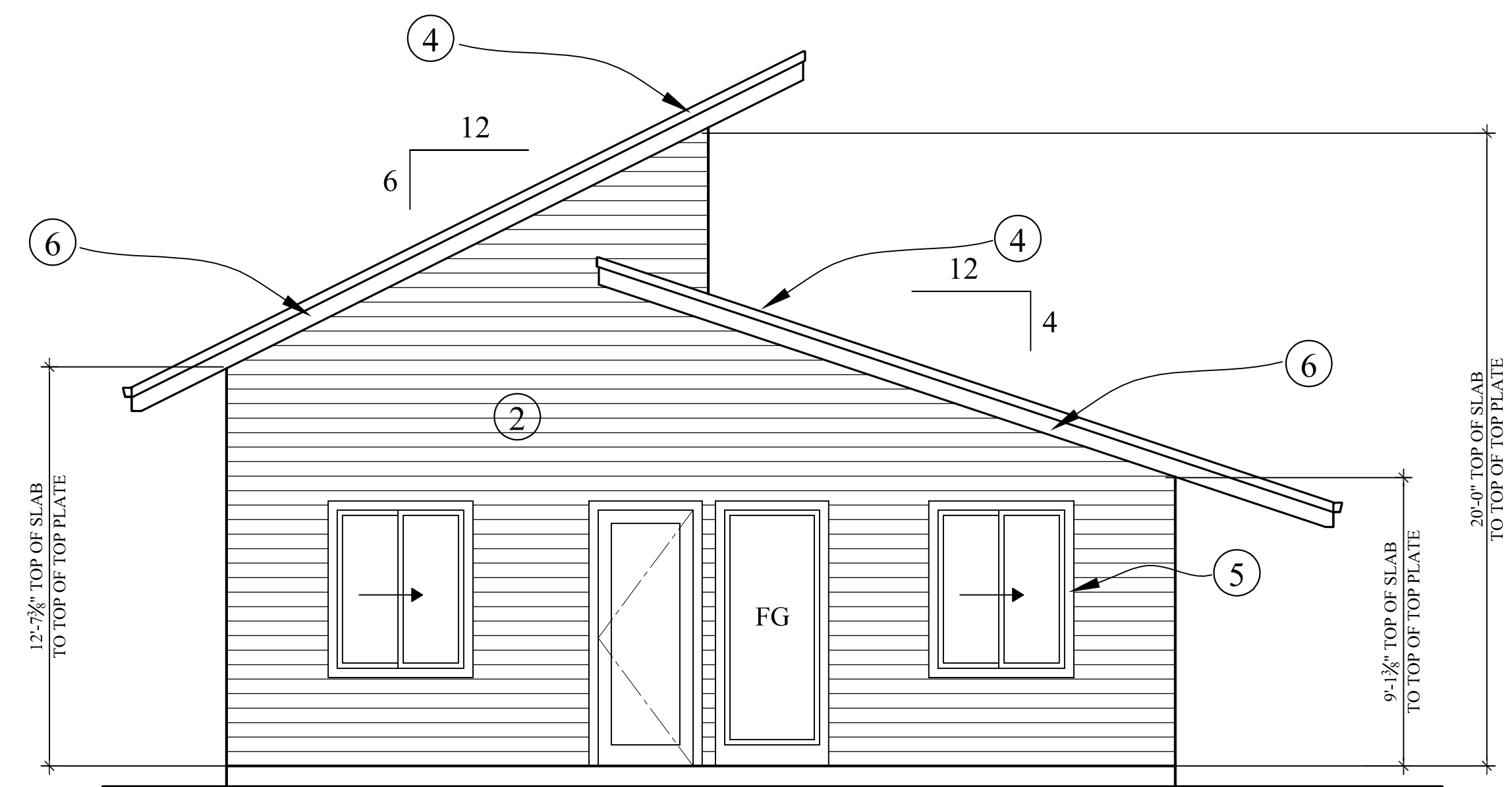
SCALE: 1/4" = 1'-0"

- ① STANDING SEAM METAL ROOFING
- ② HORIZONTAL LAP SIDING WITH +/- 5 1/2 " EXPOSURE
- ③ ALLUMINIM GUTTERS & DOWN SPOUTS
- ④ 1X4 BARGE BOARD TRIM
- ⑤ 1X4 DOOR & WINDOW TRIM
- ⑥ 2X10 BARGE BOARD
- ⑦ 2X10 FASCIA



SOUTH EAST EXTERIOR ELEVATION

SCALE: 1/4" = 1'-0"



SOUTH WEST EXTERIOR ELEVATION

SCALE: 1/4" = 1'-0"

NO.	DATE	DESCRIPTION
△		
△		
△		