

**SURVEY NOTES**

- EQUIPMENT USED: TOPCON QS AND/OR CARLSON CR2+ ROBOTIC TOTAL STATION AND TOPCON GR3 RTK/GPS
- THIS SURVEY WAS PERFORMED BY FIELD TRAVERSE WITH THE FINAL RESULTS MEETING OR EXCEEDING THE CURRENT TRAVERSE STANDARDS CONTAINED IN W.A.C. 332-130-090. ALL MEASUREMENTS WERE MADE WITH A TOPCON QS ROBOTIC TOTAL STATION IN ACCORDANCE WITH THE EQUIPMENT MANUFACTURER'S SPECIFICATIONS.
- IN ACCORDANCE WITH THE REVISED CODE OF WASHINGTON (R.C.W.) 58.09 AND THE WASHINGTON ADMINISTRATIVE CODE (W.A.C.) 332-130, THIS SURVEY MAY DEPICT OCCUPATIONAL INDICATORS THAT DIFFER FROM THE DEEDED LOT LINES. THESE INDICATORS, IF AT ALL PRESENT, MAY REPRESENT A POTENTIAL FOR CLAIMS OF UNWRITTEN TITLE. THIS SURVEY DOES NOT PURPORT TO RESOLVE SUCH ITEMS.
- FIELD WORK PERFORMED IN FEBRUARY 2020, UNDER SITTS & HILL JOB NUMBER 18718.
- UTILITIES AS SHOWN HEREON ARE BASED ON FIELD SURVEY OBSERVATION OF UTILITY LOCATE SERVICES PERFORMED BY MOUNTAIN VIEW LOCATING LLC IN FEBRUARY 2020 FOR THIS SURVEY. NO RECORD UTILITY RESEARCH HAS BEEN PERFORMED. UTILITIES OTHER THAN SHOWN MAY EXIST ON THE SITE. THE SURVEYOR DOES NOT WARRANT THAT THEY ARE SHOWN AS ACCURATELY AS POSSIBLE FROM FIELD SURVEY AND PAINTED UTILITY LOCATE LINES. COLLECTION AND DEPICTION OF EXISTING SUBSURFACE UTILITY DATA IS CONSISTENT WITH QUALITY LEVEL 8 OF THE ASCE STANDARD GUIDELINES 38-02.
- THIS SURVEY COMPLIES WITH W.A.C. 332-130-145. THE CONTOURS DEPICTED HEREON ARE BASED ON DATA FROM DIRECT FIELD MEASUREMENTS. SPOT ELEVATIONS ARE BASED ON DIRECT FIELD MEASUREMENTS AND ARE DEPICTED FOR REFERENCE. THE PURPOSE OF THE TOPOGRAPHIC MAP IS TO SERVE AS A BASE MAP FOR CONTEMPLATED SITE IMPROVEMENTS AND DESIGN.
- PBS ENGINEERING & ENVIRONMENTAL HAS SUPPLEMENTED THE BOUNDARY RESOLUTION AND RELIED UPON THE TITLE INFORMATION NOTED IN THE ALTA COMMITMENT FOR TITLE INSURANCE ISSUE BY FIDELITY NATIONAL TITLE, COMMITMENT NUMBER 612885151.
- THE SITE IS CURRENTLY GOING THROUGH A PARTITION PLAT PROCESS TO CREATE TWO LOTS. THE PROPOSED LIBRARY WILL BE CONSTRUCTED ON LOT 1.

**HORIZONTAL DATUM**

WASHINGTON STATE PLANE COORDINATE SYSTEM, SOUTH ZONE, NAD 83/2011  
 BASED ON GPS OBSERVATION UTILIZING THE WASHINGTON STATE REFERENCE NETWORK (WSRN)  
 MEASURED SOUTH 71°27'02" EAST BETWEEN FOUND MONUMENTS ALONG BUCKEYE STREET AT THE INTERSECTIONS WITH DALE ST. & HOFFMAN ST.

**VERTICAL DATUM**

ORIGINAL TOPOGRAPHIC DATA PROVIDED BY SITTS & HILL ENGINEERS, INC. WAS BASED ON NAVD 88. THE SURFACE HAS BEEN LOWERED BY 3.49 FEET TO MATCH THE VERTICAL DATUM NGVD 29.

VERTICAL DATUM NOTE BY SITTS & HILL ENGINEERS, INC.  
 NAVD 88  
 BASED ON GPS OBSERVATION UTILIZING THE WSRN WITH NGS GEOID2012B LOADED

TEMPORARY BENCHMARK ELEVATION = 27.94  
 DESCRIPTION: "X" SCRIBE IN CONCRETE AT THE RAMP AT THE SOUTHWEST CORNER OF THE INTERSECTION OF TRUTH ST AND GOERIG ST

**DEMOLITION NOTES**

- REMOVE SIGN
- REMOVE TREE

**DEMOLITION PLAN LEGEND**

- 30 --- EXISTING CONTOUR
- ← EXISTING FLOW DIRECTION

ARCHITECTS

**HACKER**

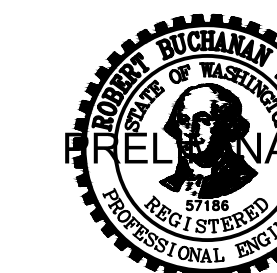
555 SE MLK Jr. Blvd. Suite 501, Portland, OR 97214

CONSULTANT

PBS Engineering and Environmental  
 1325 SE Tech Center Drive  
 Suite 140  
 Vancouver, WA 98683  
 503.281.8686  
 pbsusa.com



STAMP



REVISION NO.

DATE

KEY PLAN - (NTS)

**WOODLAND LIBRARY**

FORT VANCOUVER REGIONAL LIBRARIES  
 411 LAKESHORE DRIVE  
 WOODLAND, WA, 98674

ISSUANCE  
 TYPE II SITE PLAN REVIEW

PROJECT NUMBER  
 71959.000

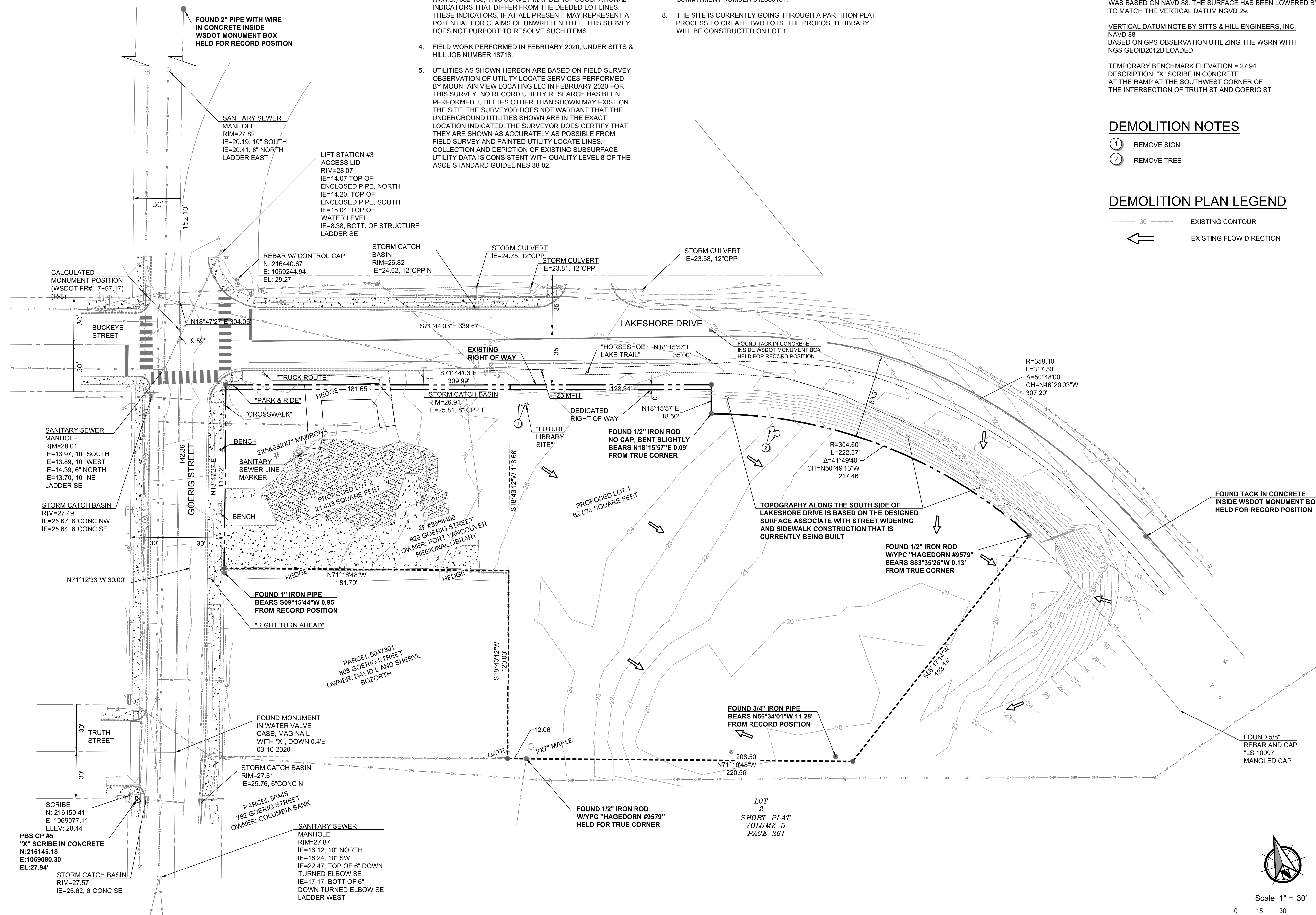
DATE  
 12/08/2022

SCALE

DRAWING TITLE  
**EXISTING CONDITIONS AND DEMOLITION PLAN**

SHEET NUMBER

**C-01**



PBS CP #5  
 "X" SCRIBE IN CONCRETE  
 N:216145.18  
 E:1069080.30  
 EL:27.94'

STORM CATCH BASIN  
 RIM=27.57  
 IE=25.62, 6"CONC SE

SANITARY SEWER MANHOLE  
 RIM=27.87  
 IE=16.12, 10" NORTH  
 IE=16.24, 10" SW  
 IE=22.47, TOP OF 6" DOWN TURNED ELBOW SE  
 IE=17.17, BOTT OF 6" DOWN TURNED ELBOW SE LADDER WEST

STORM CATCH BASIN  
 RIM=27.51  
 IE=25.76, 6"CONC N

FOUND MONUMENT IN WATER VALVE CASE, MAG NAIL WITH "X", DOWN 0.4± 03-10-2020

PARCEL 5047301  
 808 GOERIG STREET  
 OWNER: DAVID L AND SHERYL BOZORTH

FOUND 1" IRON PIPE BEARS S09°15'44"W 0.95' FROM RECORD POSITION  
 "RIGHT TURN AHEAD"

STORM CATCH BASIN  
 RIM=26.91  
 IE=25.81, 8" CPP E

STORM CATCH BASIN  
 RIM=26.82  
 IE=24.62, 12"CPP N

REBAR W/ CONTROL CAP  
 N: 216440.67  
 E: 1069244.94  
 EL: 28.27

LIFT STATION #3  
 ACCESS LID  
 RIM=28.07  
 IE=14.07 TOP OF ENCLOSED PIPE, NORTH  
 IE=14.20, TOP OF ENCLOSED PIPE, SOUTH  
 IE=18.04, TOP OF WATER LEVEL  
 IE=8.38, BOTT. OF STRUCTURE LADDER SE

SANITARY SEWER MANHOLE  
 RIM=27.82  
 IE=20.19, 10" SOUTH  
 IE=20.41, 8" NORTH  
 LADDER EAST

SANITARY SEWER MANHOLE  
 RIM=28.01  
 IE=13.97, 10" SOUTH  
 IE=13.89, 10" WEST  
 IE=14.39, 6" NORTH  
 IE=13.70, 10" NE  
 LADDER SE

STORM CATCH BASIN  
 RIM=27.49  
 IE=25.67, 6"CONC NW  
 IE=25.64, 6"CONC SE

FOUND 1/2" IRON ROD W/PC "HAGEDORN #9579"  
 HELD FOR TRUE CORNER

FOUND 3/4" IRON PIPE BEARS N56°34'01"W 11.28' FROM RECORD POSITION

FOUND 1/2" IRON ROD W/PC "HAGEDORN #9579"  
 BEARS S83°35'26"W 0.13' FROM TRUE CORNER

FOUND 1/2" IRON ROD NO CAP, BENT SLIGHTLY BEARS N18°15'57"E 0.09' FROM TRUE CORNER

R=358.10'  
 L=317.50'  
 Δ=50°49'00"  
 CH=N46°20'03"W 307.20'

R=304.60'  
 L=222.37'  
 Δ=41°49'40"  
 CH=N50°49'13"W 217.46'

"HORSESHOE LAKE TRAIL"  
 N18°15'57"E 35.00'

STORM CULVERT  
 IE=23.58, 12"CPP

STORM CULVERT  
 IE=24.75, 12"CPP

STORM CULVERT  
 IE=23.81, 12"CPP

STORM CULVERT  
 IE=24.62, 12"CPP N

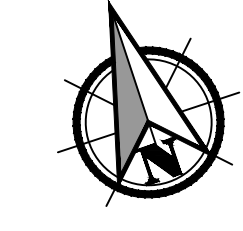
STORM CATCH BASIN  
 RIM=26.82  
 IE=24.62, 12"CPP N

REBAR W/ CONTROL CAP  
 N: 216440.67  
 E: 1069244.94  
 EL: 28.27

LIFT STATION #3  
 ACCESS LID  
 RIM=28.07  
 IE=14.07 TOP OF ENCLOSED PIPE, NORTH  
 IE=14.20, TOP OF ENCLOSED PIPE, SOUTH  
 IE=18.04, TOP OF WATER LEVEL  
 IE=8.38, BOTT. OF STRUCTURE LADDER SE

CALCULATED MONUMENT POSITION (WSDOT FR#17+57.17) (R-8)

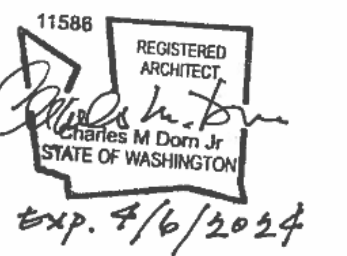
LOT 2  
 SHORT PLAT  
 VOLUME 5  
 PAGE 261



Scale 1" = 30'  
 0 15 30 60

**TOTAL SITE AREA: 62,488 sf**  
**TOTAL BUILDING AREA: 7,560 sf**  
**TOTAL IMPERVIOUS AREA: 28,559 sf (46% OF SITE AREA)**  
**TOTAL LANDSCAPED AREA: 33,912 sf (54% OF SITE AREA)**  
**TOTAL PARKING AREA SF: 12,159 sf (19% OF SITE AREA)**  
**TOTAL PARKING PROVIDED STALLS: 37**  
**STANDARD: 34**  
**COMPACT: 0**  
**ADA: 2**  
**LOADING: 1**  
**REQUIRED PARKING STALLS: 31**

STAMP



REVISION NO.

DATE

KEY PLAN - (NTS)



## WOODLAND LIBRARY

FORT VANCOUVER REGIONAL LIBRARIES  
 411 LAKESHORE DRIVE  
 WOODLAND, WA. 98674

ISSUANCE  
 TYPE II SITE PLAN REVIEW

PROJECT NUMBER  
 01923

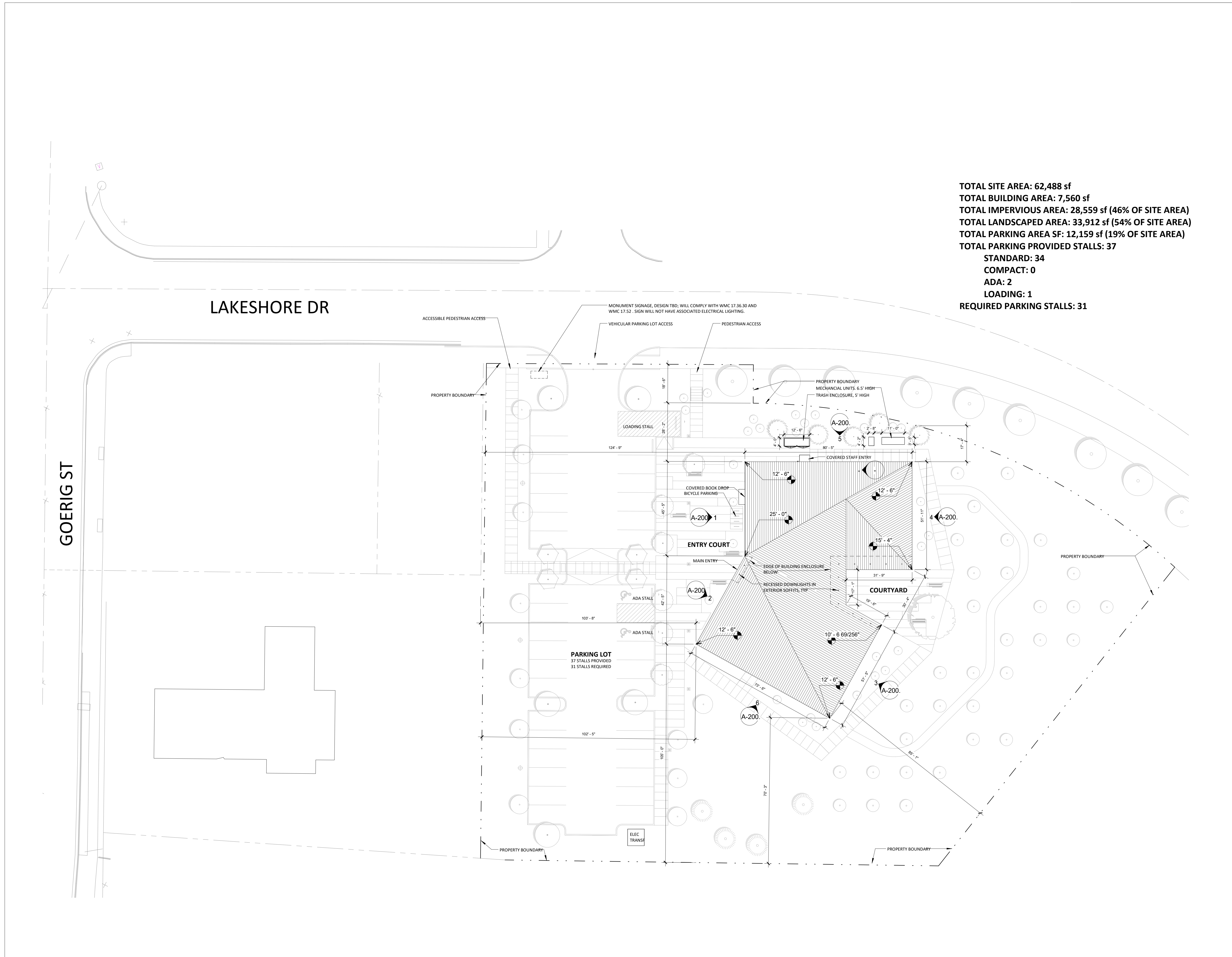
DATE  
 12/08/2022

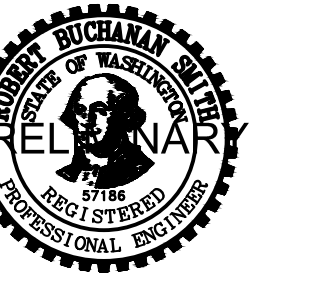
SCALE  
 1" = 20'-0"

DRAWING TITLE  
 SITE PLAN - GENERAL

SHEET NUMBER

# A-100.





## WOODLAND LIBRARY

FORT VANCOUVER REGIONAL LIBRARIES  
411 LAKESHORE DRIVE  
WOODLAND, WA, 98674

ISSUANCE  
TYPE II SITE PLAN REVIEW

PROJECT NUMBER  
71959.000

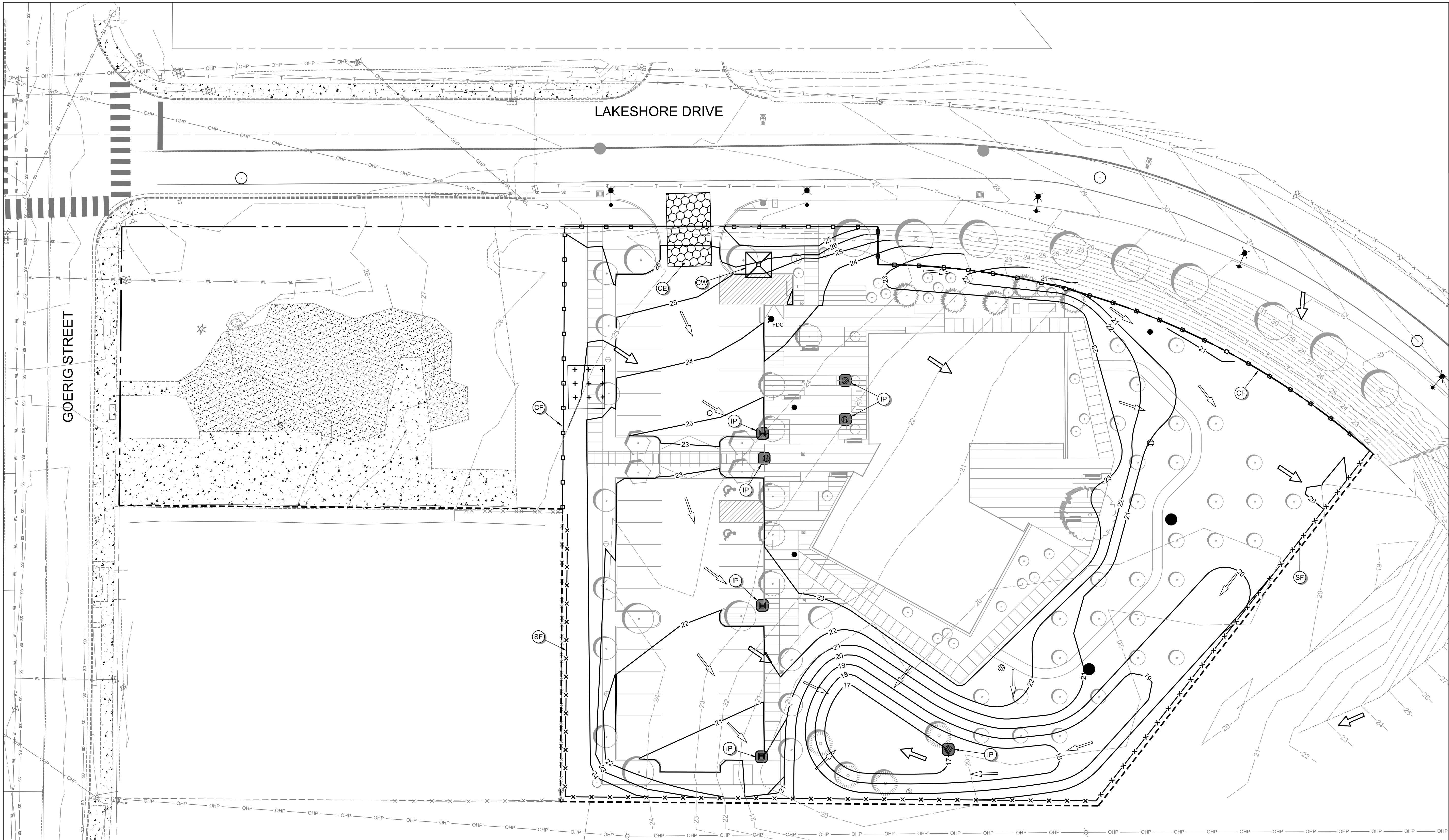
DATE  
12/08/2022

SCALE

DRAWING TITLE  
GRADING AND EROSION CONTROL PLAN

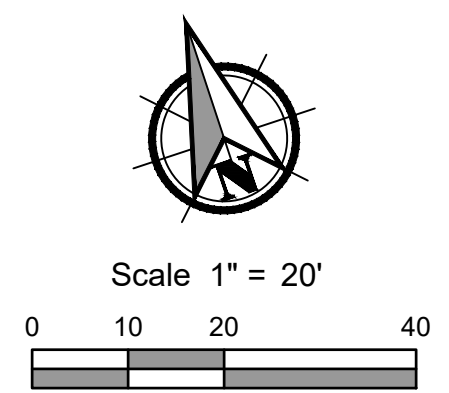
SHEET NUMBER

# C-02



### GRADING AND EROSION CONTROL LEGEND

- 30 PROPOSED CONTOUR
- 30 EXISTING CONTOUR
- ORANGE SEDIMENT FENCE
- ORANGE CONSTRUCTION FENCE (WORK LIMITS)
- GRAVEL CONSTRUCTION ENTRANCE
- CONCRETE WASH-OUT
- INLET PROTECTION
- PROPOSED STOCKPILE AREA - PLASTIC
- EXISTING FLOW DIRECTION
- PROPOSED FLOW DIRECTION





## WOODLAND LIBRARY

FORT VANCOUVER REGIONAL LIBRARIES  
411 LAKESHORE DRIVE  
WOODLAND, WA. 98674

ISSUANCE  
TYPE II SITE PLAN REVIEW

PROJECT NUMBER  
71959.000

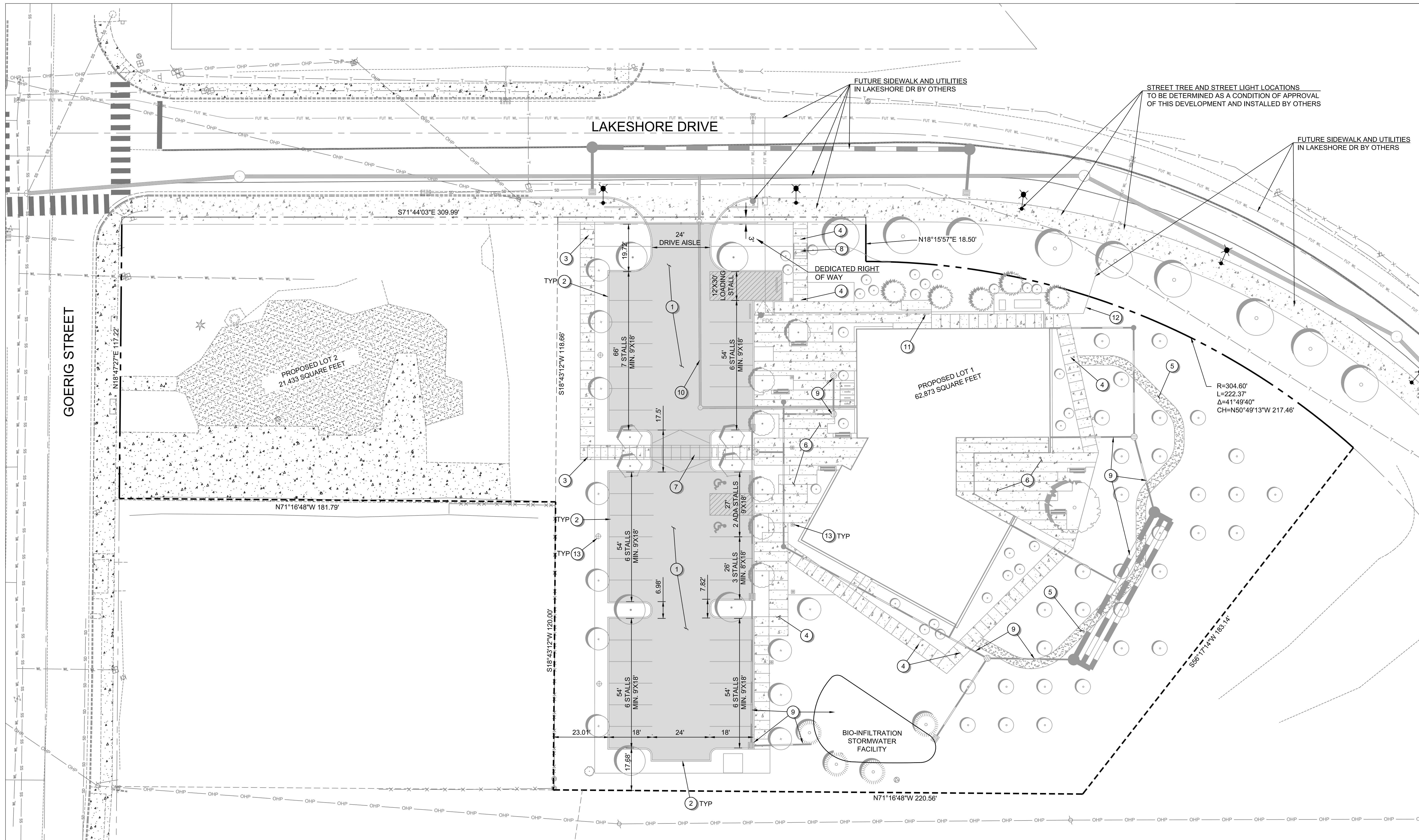
DATE  
12/08/2022

SCALE

DRAWING TITLE  
CIVIL SITE PLAN

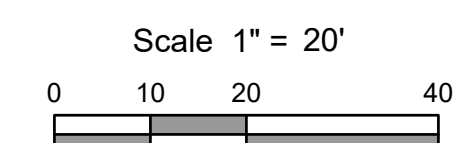
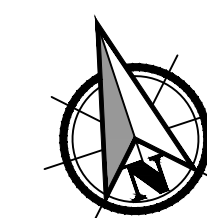
SHEET NUMBER

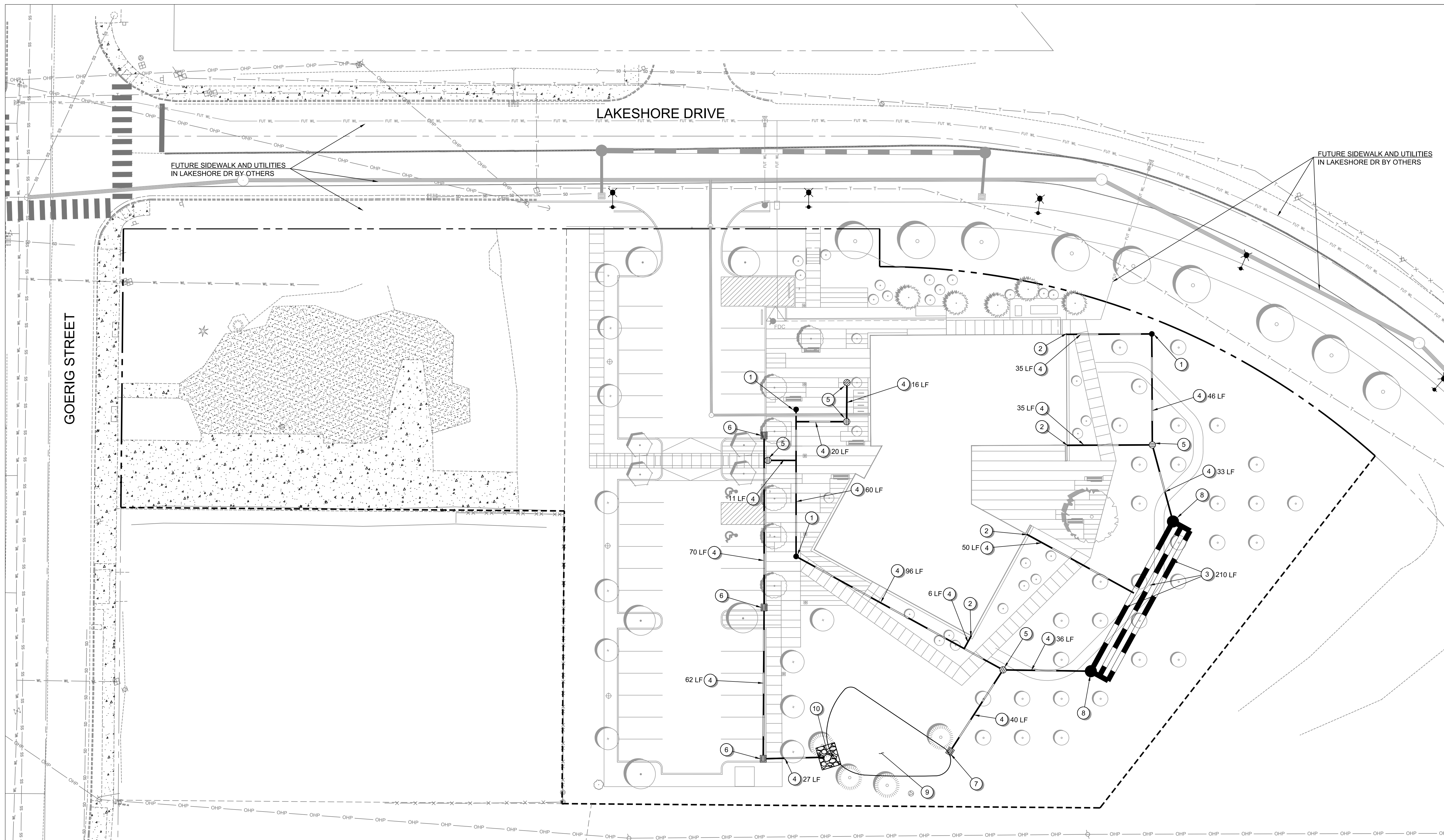
# C-03



### CIVIL NOTES

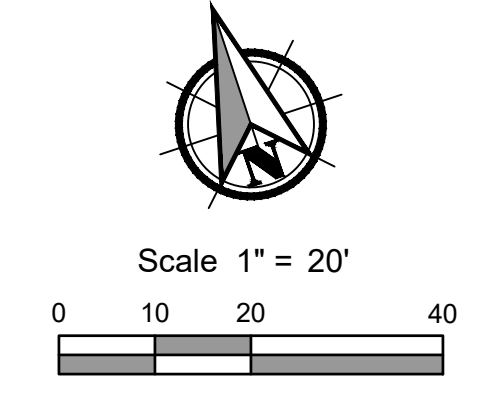
- ① AC PAVEMENT PARKING LOT
- ② STANDARD CURB
- ③ 6' ADA ACCESS PATH
- ④ 6' CONCRETE PEDESTRIAN PATH
- ⑤ 4' GRAVEL PEDESTRIAN PATH
- ⑥ CONCRETE PLAZA
- ⑦ RAISED PEDESTRIAN CROSSING
- ⑧ CONCRETE STEPS AND HANDRAIL
- ⑨ STORMWATER SYSTEM. SEE STORMWATER PLAN FOR ADDITIONAL INFORMATION.
- ⑩ SANITARY SEWER LINE. SEE SANITARY AND WATER PLAN FOR ADDITIONAL INFORMATION.
- ⑪ DOMESTIC WATER LINE. SEE SANITARY AND WATER PLAN FOR ADDITIONAL INFORMATION.
- ⑫ FIRE SERVICE LINE. SEE SANITARY AND WATER PLAN FOR ADDITIONAL INFORMATION.
- ⑬ SITE LIGHTING SYSTEM





**STORMWATER NOTES**

- ① INSTALL STANDARD CLEANOUT
- ② ROOF DRAIN CONNECTION
- ③ INSTALL 24" PERFORATED PIPE. LENGTH AS NOTED
- ④ INSTALL 6" PVC STORM LATERAL @ S=2.0% MIN. LENGTH AS NOTED
- ⑤ INSTALL AREA DRAIN
- ⑥ INSTALL CATCH BASIN
- ⑦ INSTALL OVERFLOW INLET
- ⑧ INSTALL MANHOLE
- ⑨ CONSTRUCT BIO-INFILTRATION STORMWATER FACILITY
- ⑩ INSTALL RIPRAP OUTFALL PROTECTION



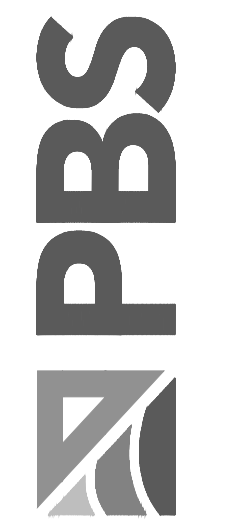
ARCHITECTS

**HACKER**

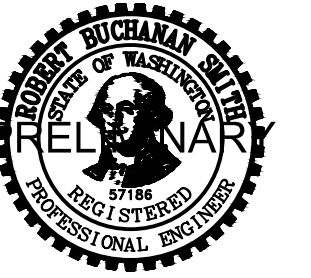
555 SE MLK Jr. Blvd. Suite 501, Portland, OR 97214

CONSULTANT

PBS Engineering and  
 Architecture  
 1325 SE Tech Center Drive  
 Suite 140  
 Vancouver, WA 98683  
 503.281.8686  
 pbsaa.com



STAMP



REVISION NO.

DATE

KEY PLAN - (NTS)

**WOODLAND LIBRARY**

FORT VANCOUVER REGIONAL LIBRARIES  
 411 LAKESHORE DRIVE  
 WOODLAND, WA, 98674

ISSUANCE  
 TYPE II SITE PLAN REVIEW

PROJECT NUMBER  
 71959.000

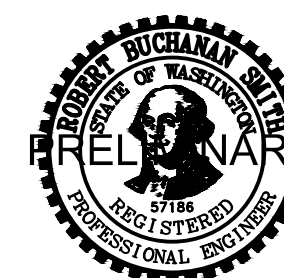
DATE  
 12/08/2022

SCALE

DRAWING TITLE  
**STORMWATER PLAN**

SHEET NUMBER

**C-04**



## WOODLAND LIBRARY

FORT VANCOUVER REGIONAL LIBRARIES  
411 LAKESHORE DRIVE  
WOODLAND, WA. 98674

ISSUANCE  
TYPE II SITE PLAN REVIEW

PROJECT NUMBER  
71959.000

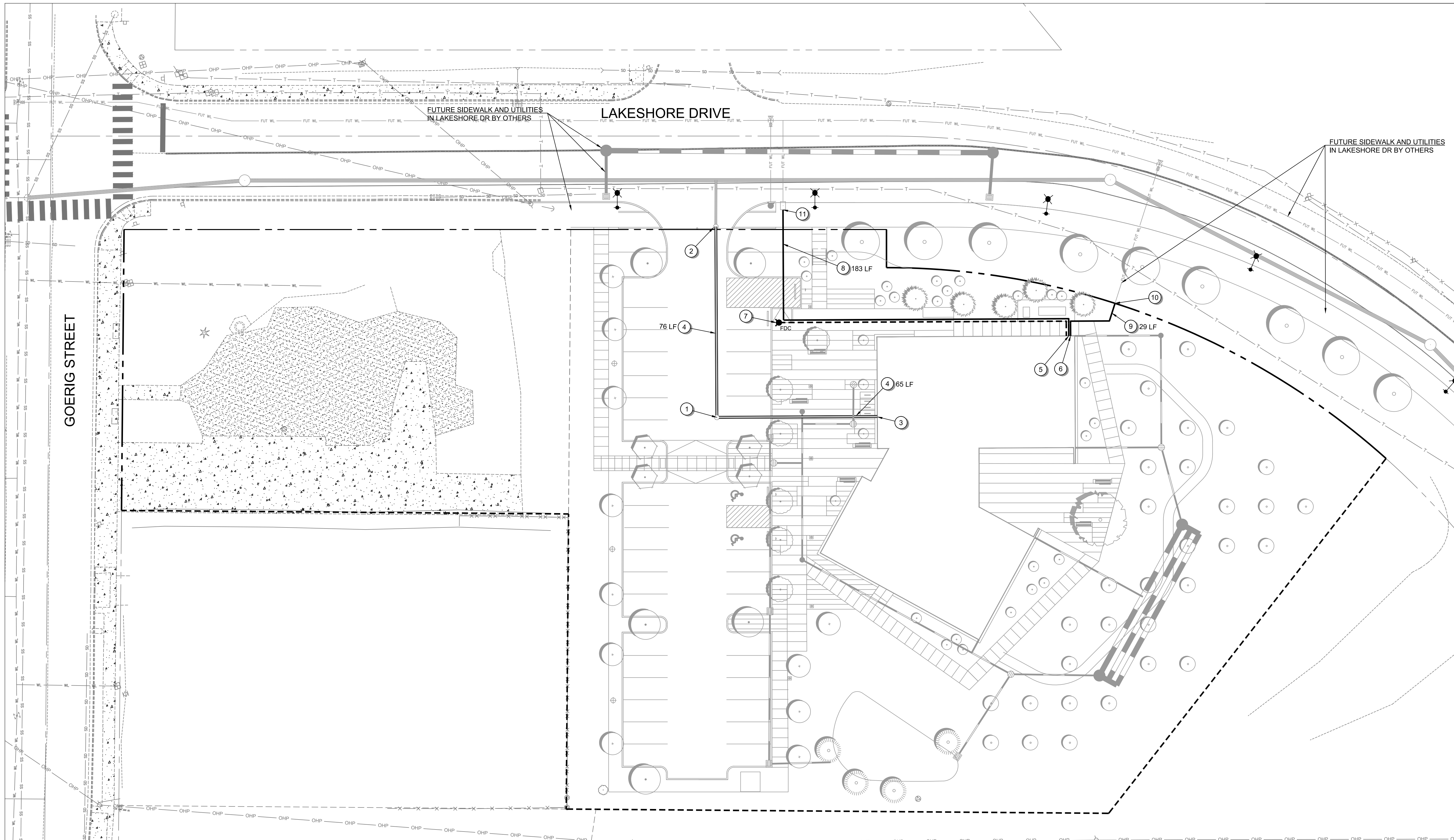
DATE  
12/08/2022

SCALE

DRAWING TITLE  
**SANITARY AND WATER PLAN**

SHEET NUMBER

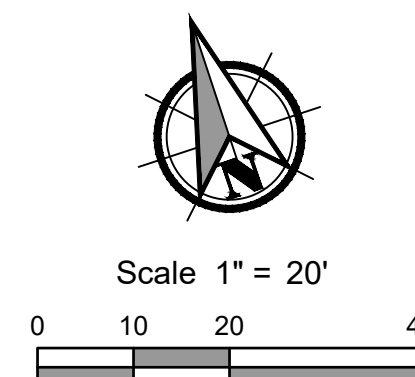
### C-05

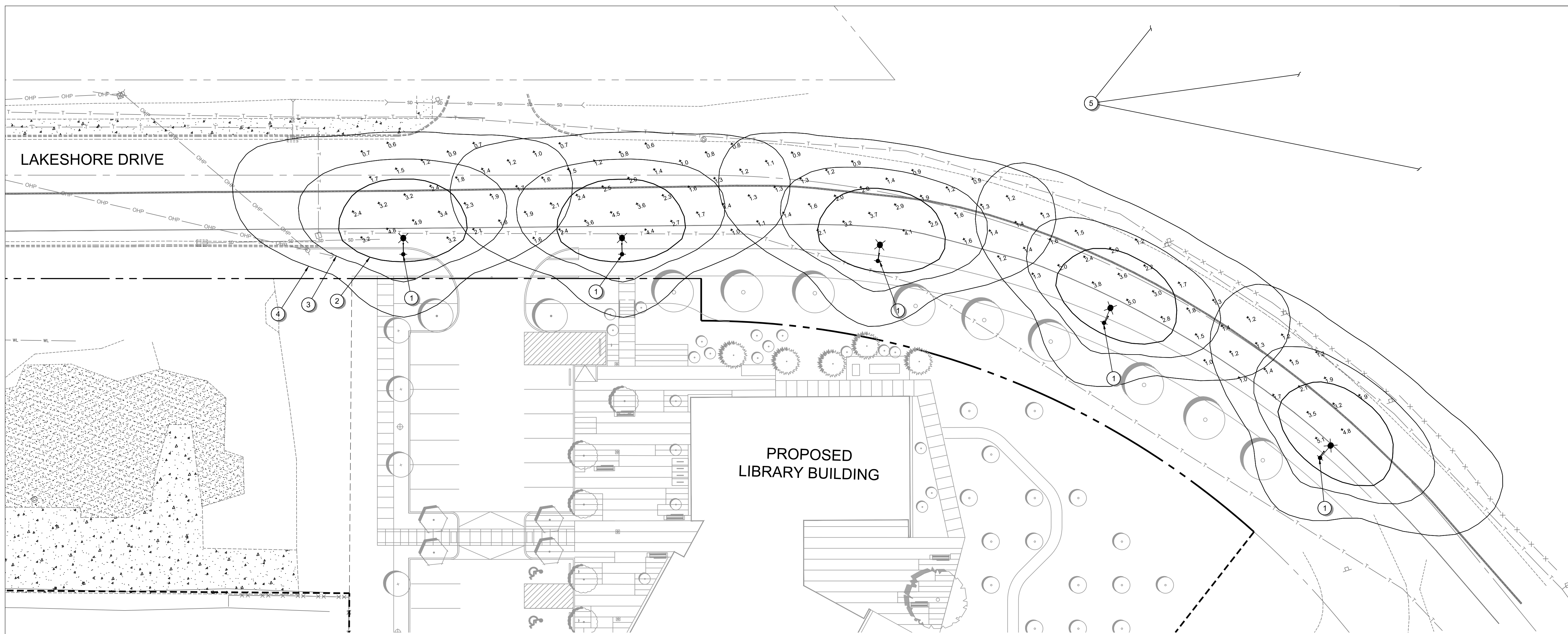
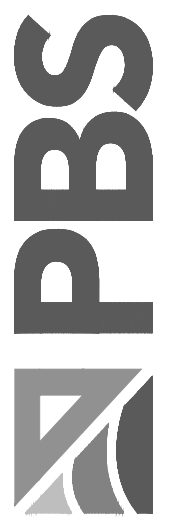


### SANITARY AND WATER NOTES

PROPOSED FRONTAGE IMPROVEMENTS, INCLUDING THE UTILITY EXTENSIONS TO THE SITE WILL BE CONSTRUCTED BY THE CITY OF WOODLAND.

- ① INSTALL STANDARD CLEANOUT
- ② CONNECT TO SANITARY LATERAL
- ③ CONNECT SANITARY SERVICE TO BUILDING. SEE MECHANICAL PLANS FOR ADDITIONAL INFORMATION.
- ④ INSTALL 6" PVC SANITARY SEWER LATERAL @ S=2.0% MIN. LENGTH AS NOTED
- ⑤ CONNECT DOMESTIC WATER SERVICE TO BUILDING. SEE MECHANICAL PLANS FOR ADDITIONAL INFORMATION.
- ⑥ CONNECT FIRE SERVICE TO BUILDING. SEE MECHANICAL PLANS FOR ADDITIONAL INFORMATION.
- ⑦ INSTALL FDC, DESIGNED BY OTHERS
- ⑧ INSTALL 1" PVC DOMESTIC WATER LINE. LENGTH AS NOTED
- ⑨ INSTALL 6" C900 (OR DI) FIRE SERVICE. LENGTH AS NOTED
- ⑩ CONNECT TO FIRE SERVICE
- ⑪ CONNECT TO WATER METER SERVICE





**CONSTRUCTION NOTES:**

**PHOTOMETRIC NOTES:**

- ① PROPOSED KING LUMINAIRE K205 MARQUIS (K205, 75W) LUMINAIRE AT 20 FT MOUNTING HEIGHT. SEE POLE & LUMINAIRE SCHEDULE.
- ② ISOLUMEN LINE REPRESENTING 2.0 FC.
- ③ ISOLUMEN LINE REPRESENTING 1.0 FC.
- ④ ISOLUMEN LINE REPRESENTING 0.33 FC.
- ⑤ I-5 SOUTHBOUND ON-RAMP AREA

**STREET LIGHT CONSTRUCTION NOTES:**

1. POWER SOURCE LOCATIONS TO BE DETERMINED BY CITY OF WOODLAND. ALL LIGHT POLE POWER SOURCES SHALL BE VERIFIED WITH CITY OF WOODLAND PLANS. CHANGES IN POWER SOURCE LOCATIONS WILL REQUIRE AS-BUILT DRAWINGS.
2. THIS PLAN DEPICTS THE MINIMUM AT-OR-ABOVE-GRADE EQUIPMENT REQUIRED FOR STREET LIGHTING. CONDUIT AND WIRING DESIGN WILL BE PREPARED BY CITY OF WOODLAND.
3. STREET LIGHT EQUIPMENT AND MATERIALS SHALL CONFORM TO CITY OF WOODLAND SPECIFICATIONS. MATERIAL SUBMITTALS AND INSTALLATIONS SHALL BE APPROVED BY CITY OF WOODLAND PRIOR TO CONSTRUCTION UNLESS NOTED OTHERWISE.
4. THE CONTRACTOR SHALL INSTALL LUMINAIRE ASSEMBLIES AND LUMINAIRE WIRING. CITY OF WOODLAND SHALL INSTALL ALL JUNCTION BOXES, STREET LIGHT FOUNDATIONS, CONDUITS (WITH PULL LINES), WIRING BETWEEN THE POWER SOURCE(S) AND THE JUNCTION BOXES, AND THE WIRING BETWEEN ALL JUNCTION BOXES.
5. ALL ELECTRICAL EQUIPMENT SHALL CONFORM TO THE CURRENT STANDARDS OF THE NATIONAL ELECTRICAL MANUFACTURERS ASSOCIATION (NEMA) AND THE UNDERWRITERS LABORATORY (UL) WHEREVER APPLICABLE. IN ADDITION TO THE REQUIREMENTS OF THE PLANS, STANDARD SPECIFICATIONS, AND SPECIAL PROVISIONS, ALL MATERIALS AND WORKMANSHIP SHALL CONFORM TO THE CURRENT REQUIREMENTS OF THE NATIONAL ELECTRICAL CODE (NEC), THE NATIONAL ELECTRICAL SAFETY CODE, THE AMERICAN NATIONAL STANDARDS INSTITUTE (ANSI), AND ANY APPLICABLE LOCAL ORDINANCES.
6. THE LOCATION OF JUNCTION BOXES ARE SCHEMATIC, AND IT IS THE CONTRACTOR'S RESPONSIBILITY TO AVOID UNDERGROUND UTILITIES.
7. LUMINAIRES ARE ORIENTED PERPENDICULAR TO THE REFERENCED CENTERLINE ALIGNMENT UNLESS NOTED OTHERWISE.

ILLUMINANCE STATISTICS			
STANDARD LIGHTING ANALYSIS ZONE	AVERAGE (FC)	AVG/MIN RATIO	MAXIMUM VEILING LUMINANCE RATIO
CITY OF WOODLAND ENGINEERING STANDARDS FOR CONSTRUCTION, TABLE 2.6, FOR MINOR ARTERIALS & COLLECTORS	1.0	3:1	N/A
LAKESHORE DRIVE, LIBRARY FRONTAGE	2.0	3:1	N/A
WASHINGTON STATE DEPARTMENT OF TRANSPORTATION DESIGN MANUAL, EXHIBITS 1040-43 & 1040-44	N/A	N/A	0.3:1
I-5 SOUTHBOUND ON-RAMP*	N/A	N/A	0.0:1

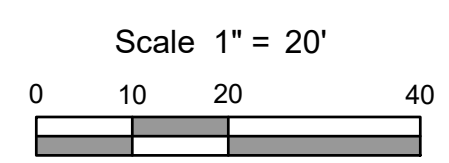
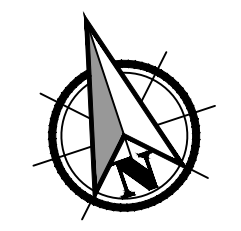
\* ANALYSIS ZONE NOT SHOWN DUE TO CALCULATIONS SHOWING NEGLIGIBLE VALUES

LUMINAIRE: LED Street Light (TYPE III)		
Manufacturer & Model		
King Luminaire K205-P4AS-III-75(SSL)-7030-120V-KPL10-4K-BK		

MAST ARM		
Length, Finish	Manufacturer & Model	Mounting Height
2.14 feet, Aluminum Finish	KNGW KA15-A-T-1	20 feet

POLE	
Length	Manufacturer & Model
20 feet	South Coast Lighting & Design 20' Tapered Fluted Pole Oxford Round Base BCOXF2535

POLE AND LUMINAIRE SCHEDULE													
#	Pole Type	Installation	Alignment	Station	Offset	Luminaire					Mounting Height (feet)	Mast Arm Length (feet)	Luminaire Options
						Manufacturer & Series	Lamp Watts	Initial Lumens	Line Volt	B-U-G Rating			
1	Aluminum	Cast In Place	Lakeshore Drive	TBD	TBD	King Luminaire K205 7030	75	8,735	120V-277V	2-1-2	20	2.14	P4 Acrylic Shallow Refractive Lens (P4AS), Solid State (SSL), 4000K color temperature (4K), Type III Distribution, KPL10 Leveling Device, & Black Paint (BK)
				TBD	TBD								
				TBD	TBD								
				TBD	TBD								
				TBD	TBD								



## WOODLAND LIBRARY

FORT VANCOUVER REGIONAL LIBRARIES  
 411 LAKESHORE DRIVE  
 WOODLAND, WA. 98674

ISSUANCE  
 TYPE II SITE PLAN REVIEW

PROJECT NUMBER  
 71959.000

DATE  
 12/08/2022

SCALE

DRAWING TITLE  
**LIGHTING PLAN**

SHEET NUMBER

# C-06

PLANT SCHEDULE

SYMBOL	BOTANICAL NAME	COMMON NAME	MINIMUM SIZE	SPACING	NOTES
	CEDRUS DEODARA	DEODAR CEDAR	6' HT.		
	GLEDITSIA TRICANTHOS ENER.	SKYLINE HONEYLOCUST	1.5' CAL.		
	PARROTIA PERSICA	PERSIAN PARROTIA	1.5' CAL.		STREET TREE
	PRUNUS YEDOENSIS 'AKEBONO'	AKEBONO FLOWERING CHERRY	1.5' CAL.		
	THUJA PLICATA	WESTERN RED CEDAR	6' HT.		
	QUERCUS COCCINEA	SCARLET OAK	1.5' CAL.		
	QUERCUS GARRYANA	OREGON WHITE OAK	3/4" CAL.		
	QUERCUS RUBRA	RED OAK	6" CAL.		SPECIMEN, LANDSCAPE ARCHITECT SELECT
	ZELKOVA SERRATA	JAPANESE ZELKOVA	1.5' CAL.		

SHRUBS, GRASSES, GROUNDCOVERS, PERENNIALS & BULBS SCHEDULE

SYMBOL	BOTANICAL NAME	COMMON NAME	MINIMUM SIZE	SPACING	NOTES
	ACER CIRCINATUM	VINE MAPLE	6' HT.	12' O.C.	LARGE SHRUB
	ARBUTUS 'MARINA'	STRAWBERRY TREE	#5 CONT.	12' O.C.	LARGE SHRUB
	EUONYMUS JAPONICUS 'MICROPHYLLUS'	BOX LEAF EUONYMUS	#3 CONT.	3' O.C.	36" MAX. HT. AT PARKING
	ILEX CRENATA 'GREEN ISLAND'	GREEN ISLAND HOLLY	#3 CONT.	3' O.C.	36" MAX. HT. AT PARKING
	LONICERA PILEATA	BOX LEAF HONEYSUCKLE	#3 CONT.	3' O.C.	36" MAX. HT. AT PARKING
	MORELLA CALIFORNICA	WAX MYRTLE	#5 CONT.	6' O.C.	
	RHODODENDRON 'DREAMLAND'	DREAMLAND RHODODENDRON	#5 CONT.	4' O.C.	
	RHODODENDRON 'GOLDFLIMMER'	GOLDFLIMMER RHODODENDRON	#5 CONT.	4' O.C.	
	SYRINGA VULGARIS 'SENSATION'	SENSATION LILAC	#5 CONT.	4' O.C.	SPECIMEN
	VIBURNUM MARIESII	DOUBLEFILE VIBURNUM	#5 CONT.	4' O.C.	

PLAZA PLANTS

	ARCTOSTAPHYLOS EDMUNDSII 'BIG SUR'	BIG SUR MANZANITA	#1 CONT.	3' O.C.	SMALL SHRUB
	EUPHORBIA CHARACIAS	MEDITERRANEAN SPURGE	#1 CONT.	24" O.C.	SMALL SHRUB
	NANDINA DOMESTICA	HEAVENLY BAMBOO	#1 CONT.	24" O.C.	SMALL SHRUB
	SYRINGA PUBESCENS 'MISS KIM'	MISS KIM LILAC	#1 CONT.	24" O.C.	SMALL SHRUB
	VIBURNUM DAVIDII	DAVID VIBURNUM	#1 CONT.	24" O.C.	SMALL SHRUB
	BOUTELOUA GRACILIS 'BLONDE AMBITION'	BLONDE AMBITION	#1 CONT.	24" O.C.	SMALL GRASS
	CAREX 'ICE DANCE'	JAPANESE SEDGE	#1 CONT.	24" O.C.	SMALL GRASS
	LAVANDULA ANGUSTIFOLIA 'LITTLE LOTTIE'	LAVENDER 'LITTLE LOTTIE'	#1 CONT.	24" O.C.	SMALL PERENNIAL
	SESLERIA AUTUMNALIS	AUTUMN MOOR GRASS	#1 CONT.	24" O.C.	SMALL GRASS
	TULIPA FOSTERIANA	FOSTERIANA TULIP	BULB	4" O.C.	BULB TRIANGULAR SPACING
	TULIPA 'SHIRLEY'	TRIUMPH TULIP	BULB	4" O.C.	BULB TRIANGULAR SPACING
	TULIPA 'GUDOSHNIK DOUBLE'	DOUBLE LATE TULIP	BULB	4" O.C.	BULB TRIANGULAR SPACING

STORMWATER PLANTS

	CAREX DIVULSA	GRAY SEDGE	#1 CONT.	12" O.C.	
	CORNUS SERCIEA 'ISANTI'	ISANTI REDTWIG DOGWOOD	#1 CONT.	48" O.C.	
	JUNCUS PATENS 'CARMAN'S GRAY'	CARMAN'S GRAY JUNCUS	#1 CONT.	12" O.C.	
	SPIRAEA BETULIFOLIA	BIRCH LEAF SPIREA	#1 CONT.	30" O.C.	
	SPIRAEA DOUGLASII	ROSE SPIREA 'HARDHACK'	#1 CONT.	30" O.C.	

MEADOW PLANTS

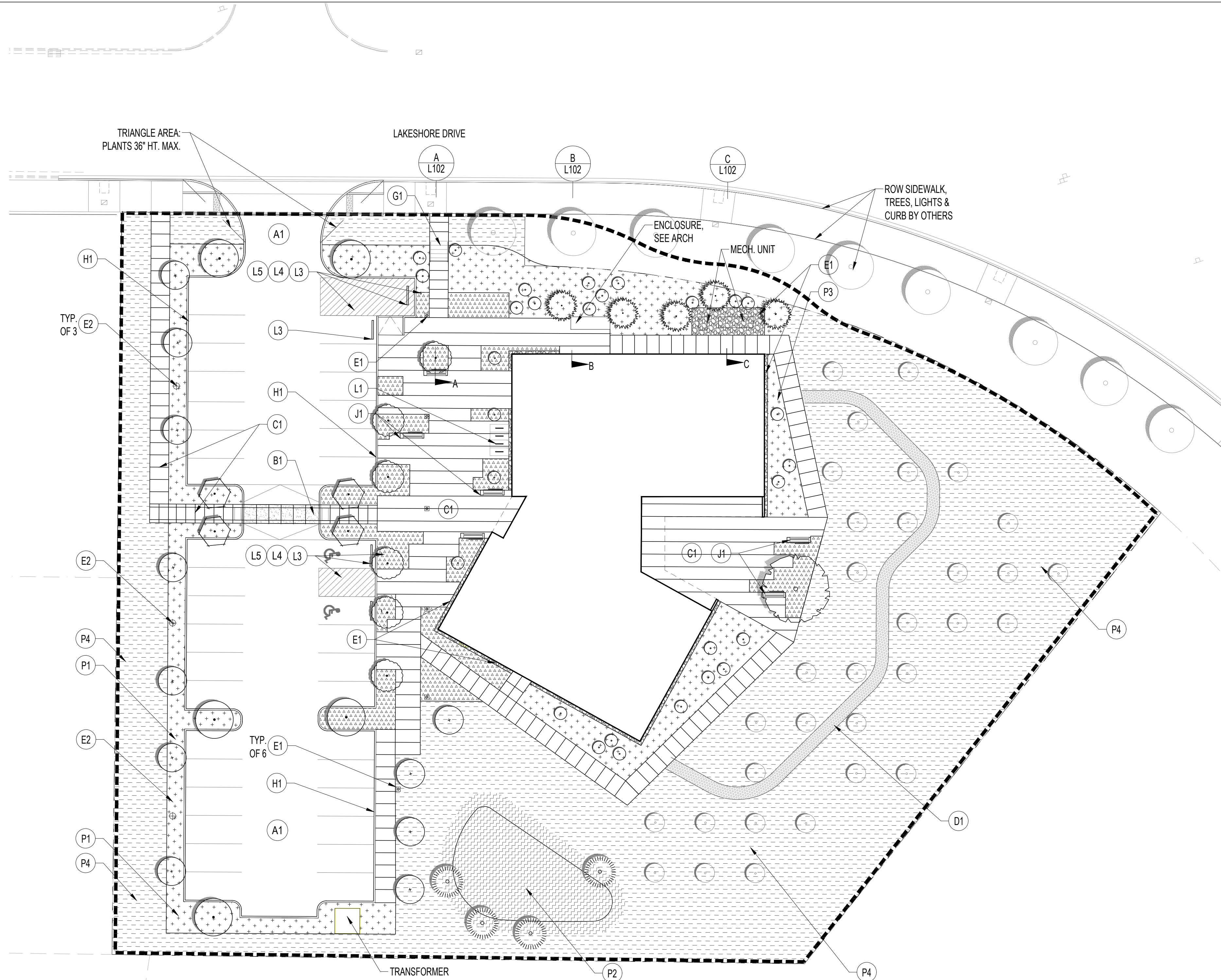
MEADOW SEED MIX	COMPOSITION	SEED	1LB/ 1,000 SF	HYDRO SEED
BROMUS CARINATUS	CALIFORNIA BROME 50%			
FESTUCA OVINA	SHEEP FESCUE 18%			
ESCHSCHOLZIA CALIFORNICA	CALIFORNIA POPPY 8%			
GAILLARDIA PULCHELLA	INDIAN BLANKET 5.5%			
ACHILLEA MILLEFOLIUM	YARROW 5%			
DESCHAMPSIA CESPITOSA	TUFTED HAIRGRASS 5%			
LUPINUS BICOLOR	LUPINE 4%			
KOELERIA MACRANTHA	PRAIRE JUNEGRASS 3.5%			
LINARIA MAROCCANA	SNAPDRAGON 1%			

IRRIGATION NOTES:

A. ALL GROUNDCOVER, SHRUB, AND TREES TO HAVE AUTOMATIC, ET BASED CONTROLLER IRRIGATION SYSTEM. IRRIGATION ZONES SHALL BE ARRANGE BASED ON MICROCLIMATE CONDITIONS AND PLANT TYPES.

PLANTING NOTES:

- VERIFY AND COORDINATE WORK AROUND ALL UNDERGROUND UTILITIES BEFORE EXCAVATION. NOTIFY ALL UTILITY PROVIDERS AT LEAST TWO (2) WORKING DAYS PRIOR TO BEGINNING WORK.
- PROVIDE POSITIVE DRAINAGE VIA SLOPE; DECOMPACTION; AREA DRAINS & SUBSURFACE PERFORATED DRAIN PIPES, FOR ALL PLANTING AREAS.
- VERIFY THAT THE CONDITIONS ARE SUITABLE TO PROMOTE HEALTHY PLANT GROWTH. DO NOT PROCEED IF CONDITIONS DETRIMENTAL TO HEALTHY GROWING ENVIRONMENT ARE PRESENT, INCLUDING OVER-COMPACTED SOILS, ADVERSE DRAINAGE CONDITIONS, DEBRIS, OR OTHER HARMFUL CIRCUMSTANCES. PROCEEDING WITHOUT NOTIFICATION DENOTES ACCEPTANCE.



LANDSCAPE MATERIALS SCHEDULE

PAVEMENTS	STAIRS, WALLS, AND CURBS	SITE FURNISHINGS	PLANTING, IRRIGATION AND SOIL
A1 ASPHALT PAVING, SEE CIVIL	G1 CONCRETE STAIRS - INLAY NOSINGS - PAINTED METAL HANDRAILS	E1 PEDESTRIAN 12' HT. POLE LIGHT, SEE ELEC. - DUAL HEAD - LED / DARKSKY	P1 PERIMETER PLANTING AREA - 36" TO 60" MAX HEIGHT - 12" AMENDED TOPSOIL - AUTOMATIC IRRIGATION
B1 CONCRETE PAVING- VEHICULAR - MEDIUM BROOM FINISH - 6" DEPTH	H1 CONCRETE CURB - 6" HT.	E2 PARKING 20' HT. POLE LIGHT, SEE ELEC. - LED / DARKSKY	P2 STORMWATER PLANTING AREA - 24" MAX. HEIGHT - SEE CIVIL FOR SOIL MEDIA - AUTOMATIC IRRIGATION
C1 CONCRETE PAVING - PEDESTRIAN - MEDIUM BROOM FINISH - ACID WASH, LIGHT EX. AGGREGATE - 4" DEPTH	H2 CONCRETE CURB - FLUSH	L1 BIKE RACK - STAINLESS STEEL	P3 PLAZA PLANTING AREA - 36" MAX HEIGHT - 12" AMENDED TOPSOIL - AUTOMATIC IRRIGATION
D1 WOODCHIP PATH: - 3" DEPTH		L2 BENCH WITH BACK REST - WOOD TOP ON CONCRETE BASE	P4 MEADOW PLANTING AREA - 4" AMENDED TOPSOIL - SEED MIX
E1 AGGREGATE BAND - 4" DEPTH CRUSHED ROCK - METAL EDGING		L3 PRECAST WHEELSTOP	
A1 ASPHALT PAVING, SEE CIVIL		L4 ADA/ LOADING STALL SIGN - 2' SQ. POST PAINT BLACK	
B1 CONCRETE PAVING- VEHICULAR - MEDIUM BROOM FINISH - 6" DEPTH		L5 PAVEMENT STRIPES/ LOGO	
C1 CONCRETE PAVING - PEDESTRIAN - MEDIUM BROOM FINISH - ACID WASH, LIGHT EX. AGGREGATE - 4" DEPTH			E1 EVERGREEN TREES - 6' HT.
D1 WOODCHIP PATH: - 3" DEPTH			E2 DECIDUOUS TREES - 1.5' CAL. MIN.
E1 AGGREGATE BAND - 4" DEPTH CRUSHED ROCK - METAL EDGING			E3 RESTORATION TREE GROVE: - 3/4" CAL.
			E4 SPECIMEN TREE - 6" CAL.

LIMIT OF WORK

ARCHITECTS

**HACKER**

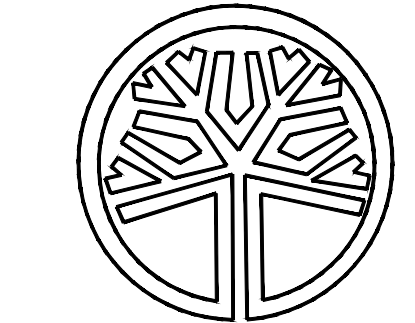
555 SE MLK Jr. Blvd. Suite 501, Portland, OR 97214

CONSULTANT

**PLACE**

735 NW 18th Avenue  
Portland, OR 97209  
503.334.2080  
www.place.la

STAMP



STATE OF WASHINGTON  
REGISTERED  
LANDSCAPE ARCHITECT  
Mauricio Jose Villarreal  
MAURICIO JOSE VILLARREAL  
CERTIFICATE NO. 1143

REVISION NO. DATE

KEY PLAN - (NTS)



**WOODLAND LIBRARY**

FORT VANCOUVER REGIONAL LIBRARIES  
411 LAKESHORE DRIVE  
WOODLAND, WA, 98674

ISSUANCE  
TYPE II SITE PLAN REVIEW

PROJECT NUMBER  
01923

DATE  
12/08/2022

SCALE  
1"=20'

DRAWING TITLE

**SITE MATERIAL PLAN**

SHEET NUMBER

**L-101**



PAVEMENTS

- C1 CONCRETE PAVING - PEDESTRIAN
  - MEDIUM BROOM FINISH
  - ACID WASH, LIGHT EX. AGGREGATE
  - 4" DEPTH

STAIRS, WALLS, AND CURBS

- G1 CONCRETE STAIRS
  - INLAY NOSINGS
  - PAINTED METAL HANDRAILS

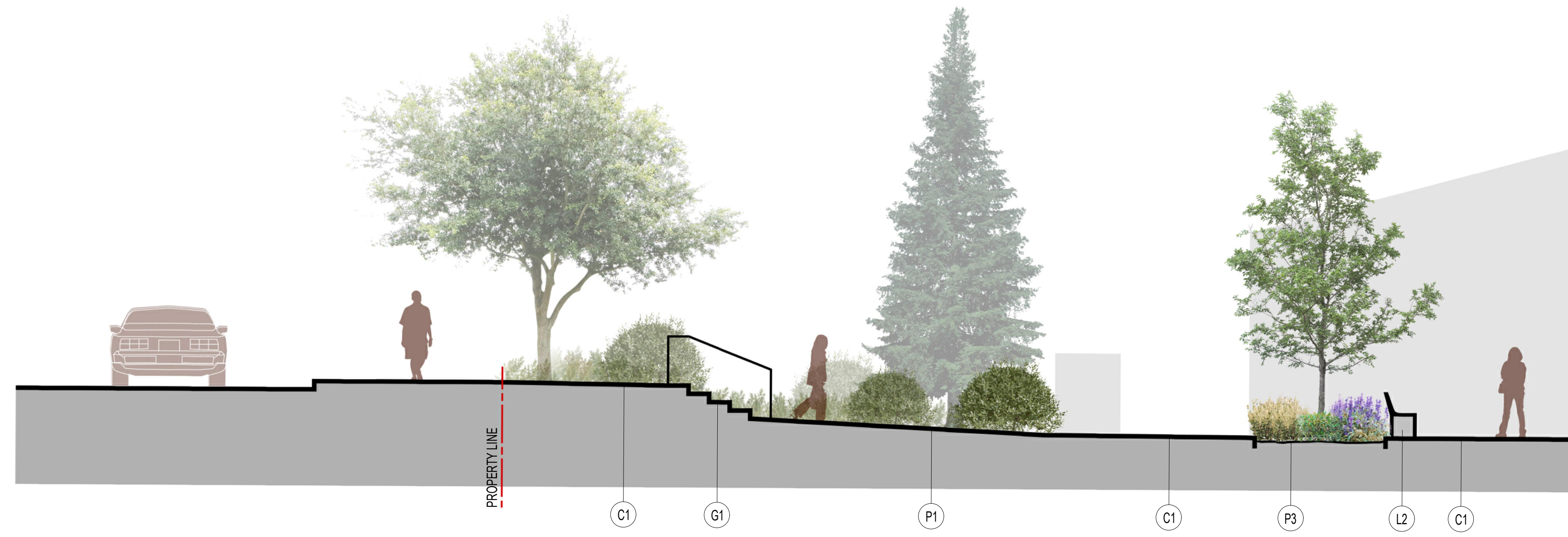
SITE FURNISHINGS

- L2 BENCH WITH BACK REST
  - WOOD TOP OF CONCRETE BASE

PLANTING, IRRIGATION AND SOIL

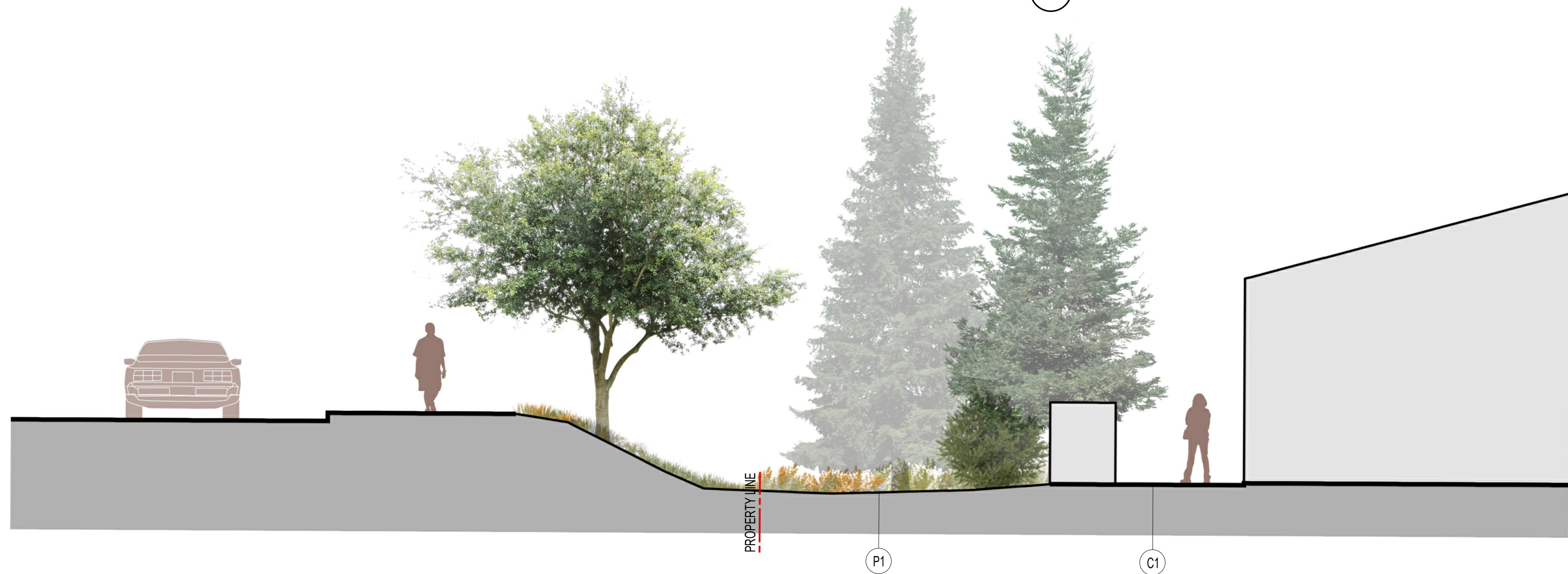
- P1 PERIMETER PLANTING AREA
  - 36" TO 60" MAX HEIGHT
  - 12" AMENDED TOPSOIL
  - AUTOMATIC IRRIGATION

- P3 PLAZA PLANTING AREA
  - 36" MAX HEIGHT
  - 12" AMENDED TOPSOIL
  - AUTOMATIC IRRIGATION



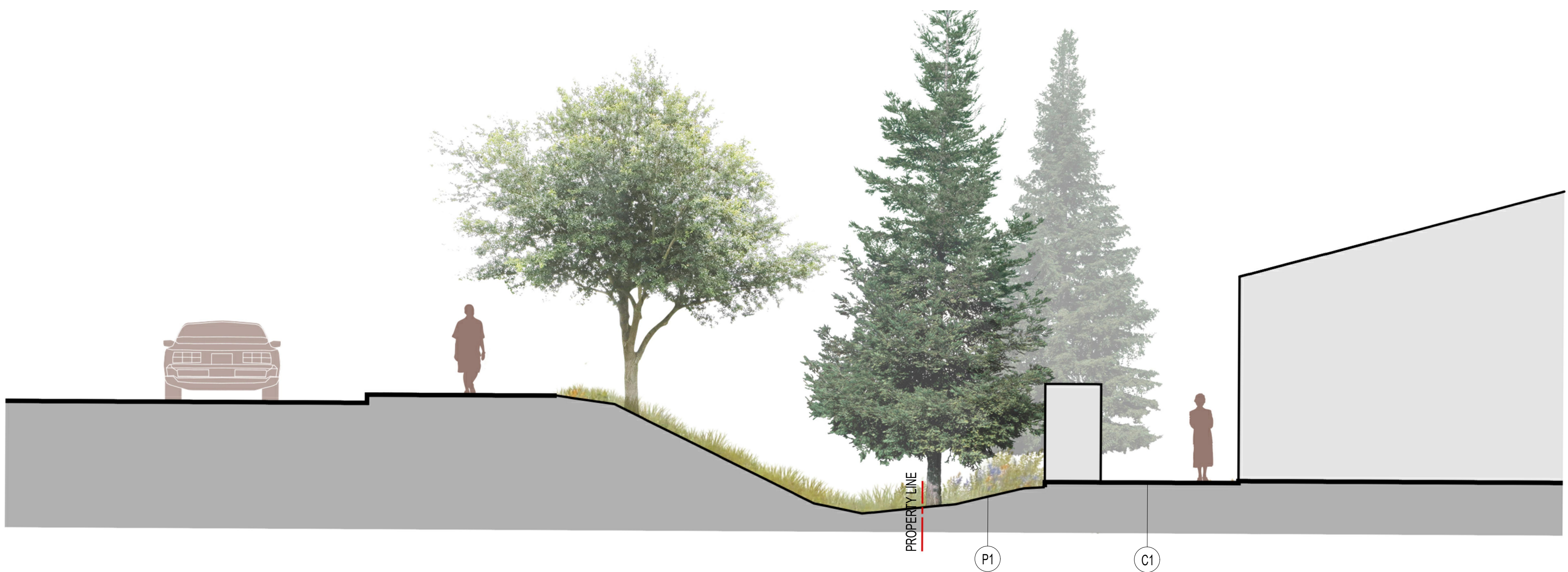
A ENTRANCE SECTION

1"=5'



B TRASH SCREEN SECTION

1"=5'



C MECH. UNIT SECTION

1"=5'

ARCHITECTS

**HACKER**

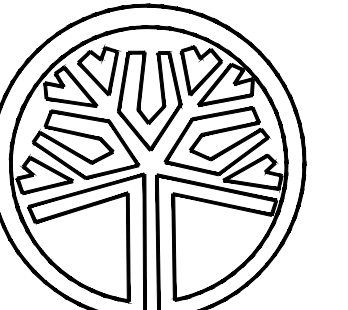
555 SE MLK Jr. Blvd. Suite 501, Portland, OR 97214

CONSULTANT

**PLACE**

735 NW 18th Avenue  
Portland, OR 97209  
503.334.2080  
www.place.la

STAMP



STATE OF WASHINGTON  
REGISTERED  
LANDSCAPE ARCHITECT  
*Mauricio Jose Villarreal*  
MAURICIO JOSE VILLARREAL  
CERTIFICATE NO. 1143

REVISION NO. DATE

KEY PLAN - (NTS)



**WOODLAND  
LIBRARY**

FORT VANCOUVER REGIONAL LIBRARIES  
411 LAKESHORE DRIVE  
WOODLAND, WA. 98674

ISSUANCE  
TYPE II SITE PLAN REVIEW

PROJECT NUMBER  
01923

DATE  
12/08/2022

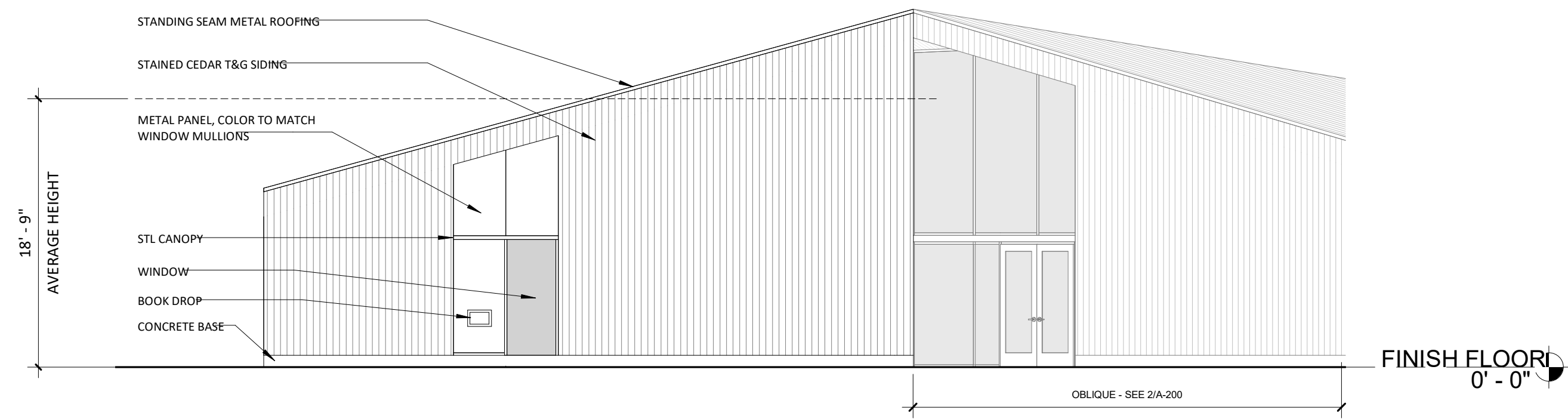
SCALE  
1"=5'

DRAWING TITLE

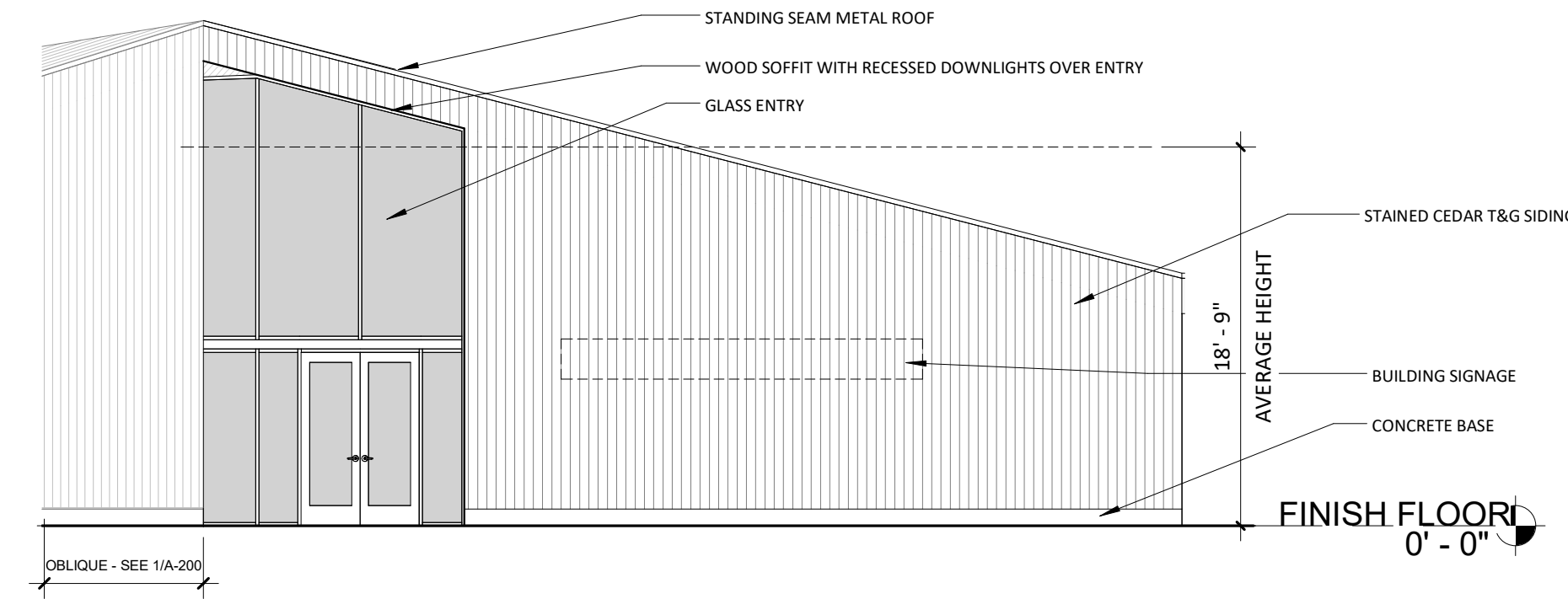
SITE SECTIONS

SHEET NUMBER

**L-102**

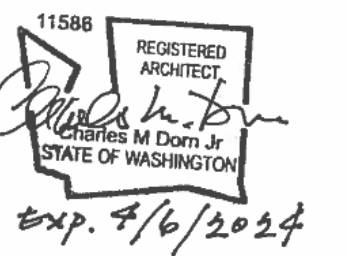


1 EXTERIOR ELEVATION - WEST  
A-200. 1/8" = 1'-0"

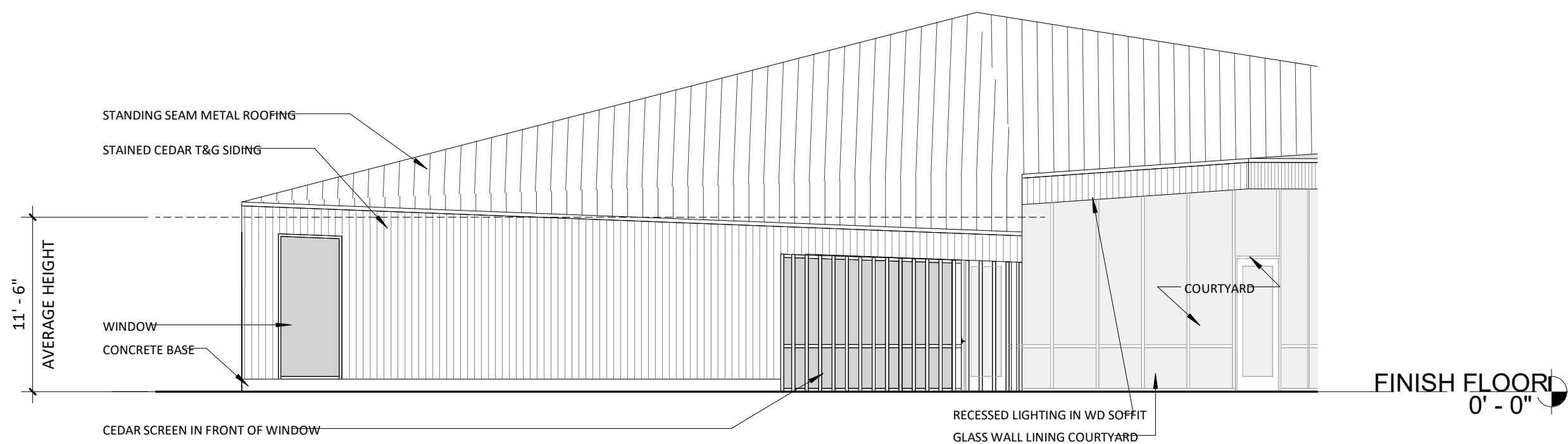


2 EXTERIOR ELEVATION - WEST  
A-200. 1/8" = 1'-0"

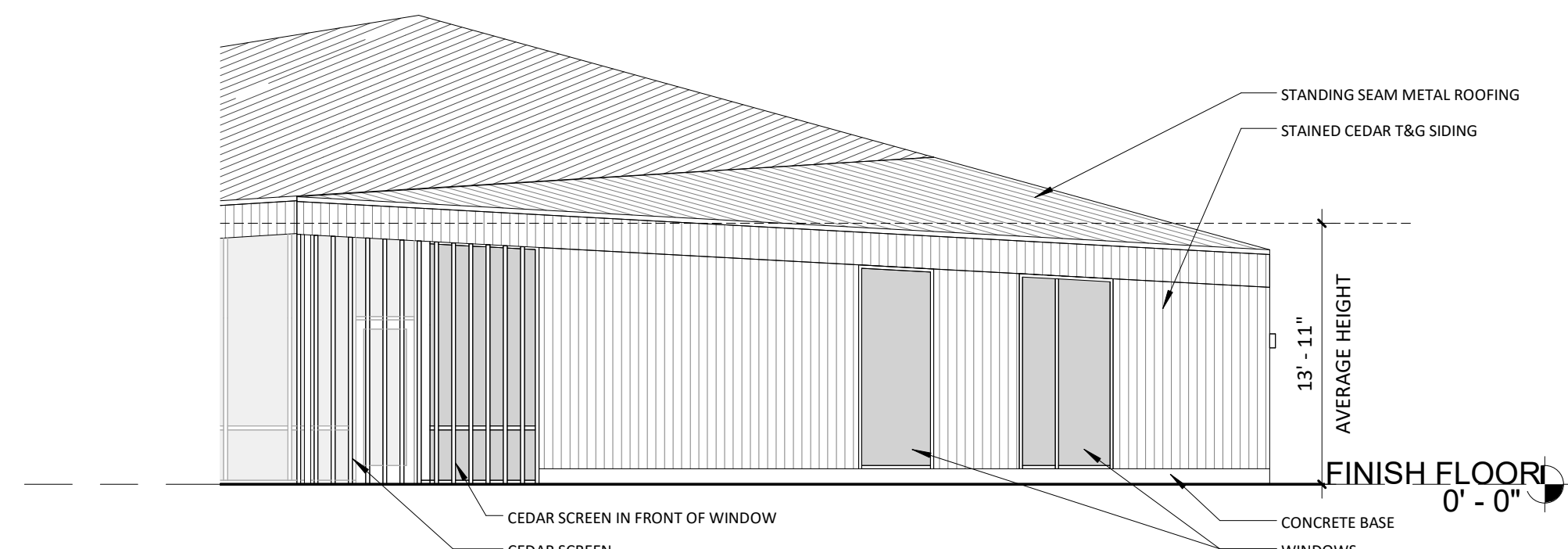
STAMP



REVISION NO. DATE

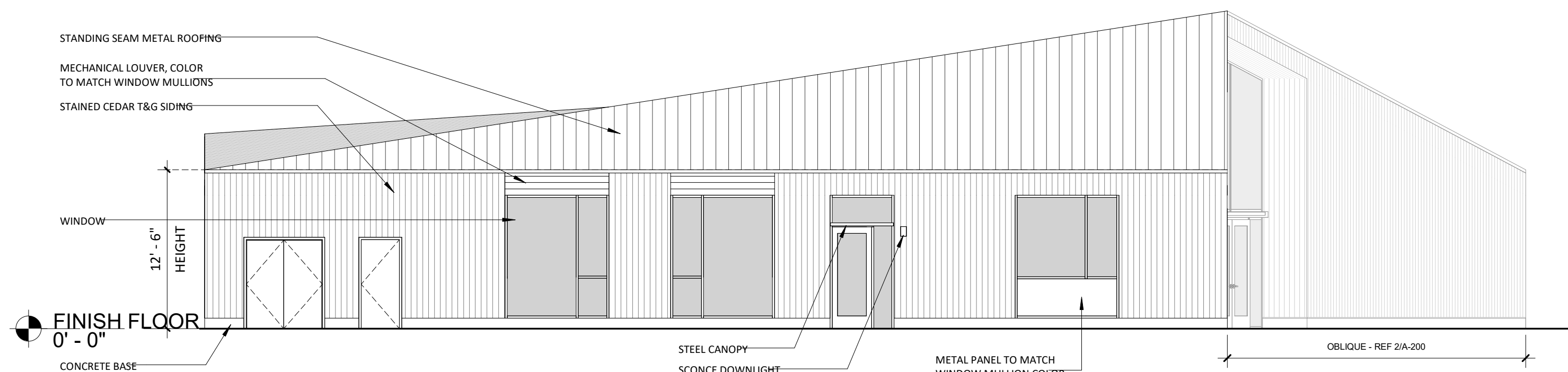


3 EXTERIOR ELEVATION - SOUTHEAST  
A-200. 1/8" = 1'-0"

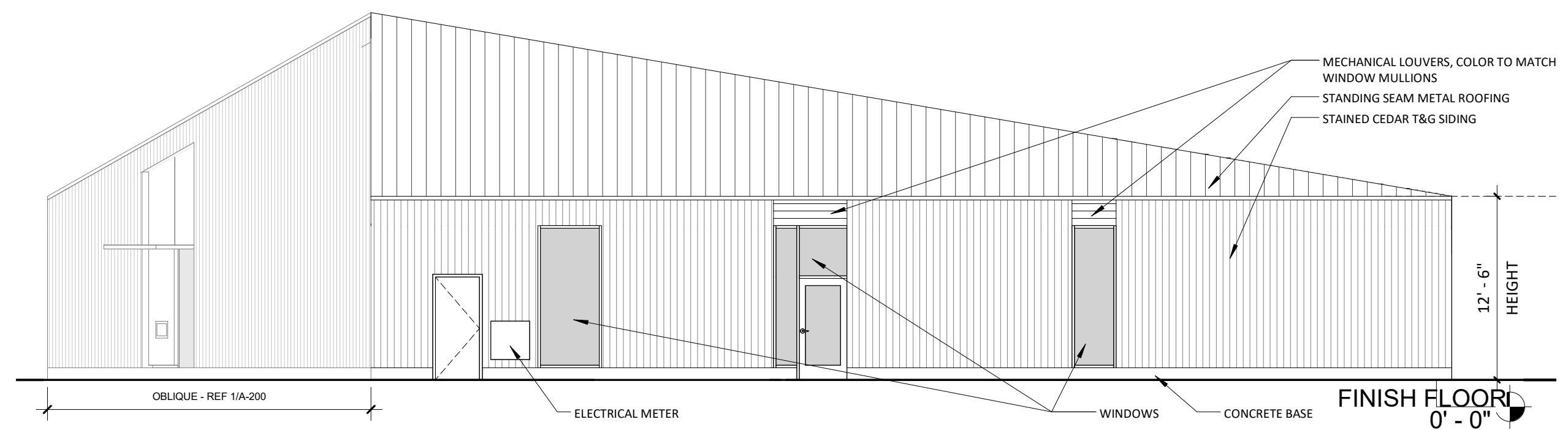


4 EXTERIOR ELEVATION - EAST  
A-200. 1/8" = 1'-0"

KEY PLAN - (NTS)



5 EXTERIOR ELEVATION - NORTH  
A-200. 1/8" = 1'-0"



6 EXTERIOR ELEVATION - SOUTHWEST  
A-200. 1/8" = 1'-0"

## WOODLAND LIBRARY

FORT VANCOUVER REGIONAL LIBRARIES  
411 LAKESHORE DRIVE  
WOODLAND, WA. 98674

ISSUANCE  
TYPE II SITE PLAN REVIEW

PROJECT NUMBER  
01923

DATE  
12/08/2022

SCALE  
1/8" = 1'-0"

DRAWING TITLE  
BUILDING ELEVATIONS

SHEET NUMBER

# A-200.



AERIAL VIEW



VIEW OF MAIN ENTRY FROM LAKESHORE DRIVE

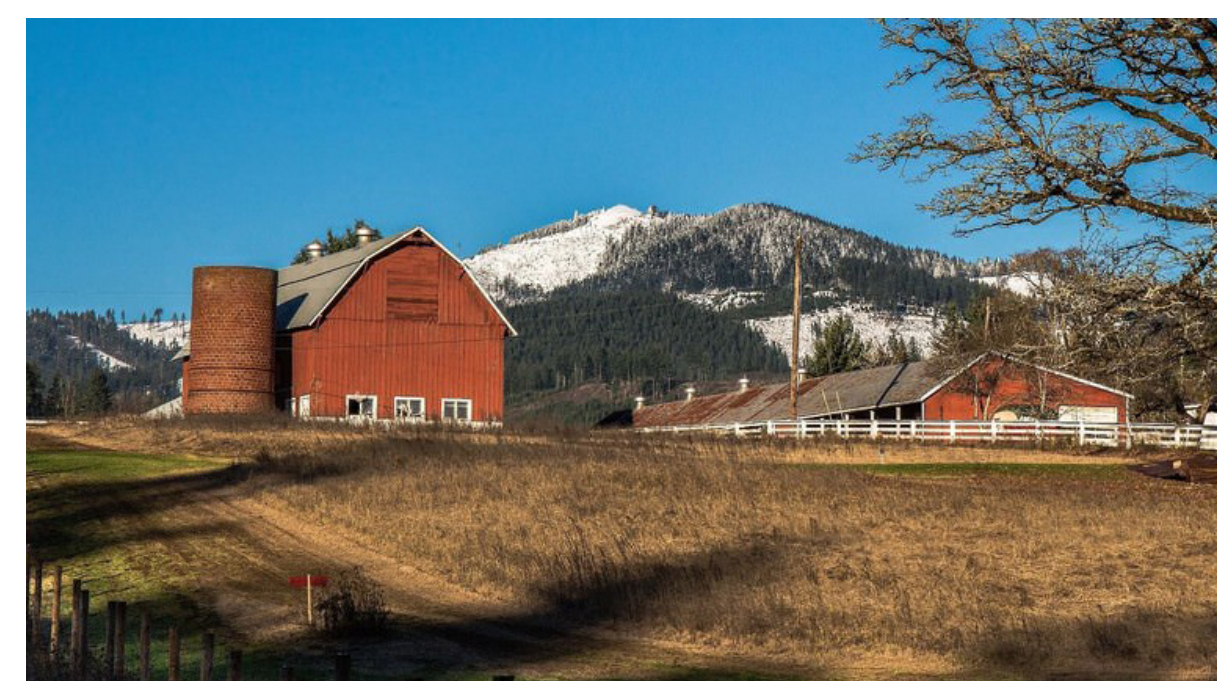
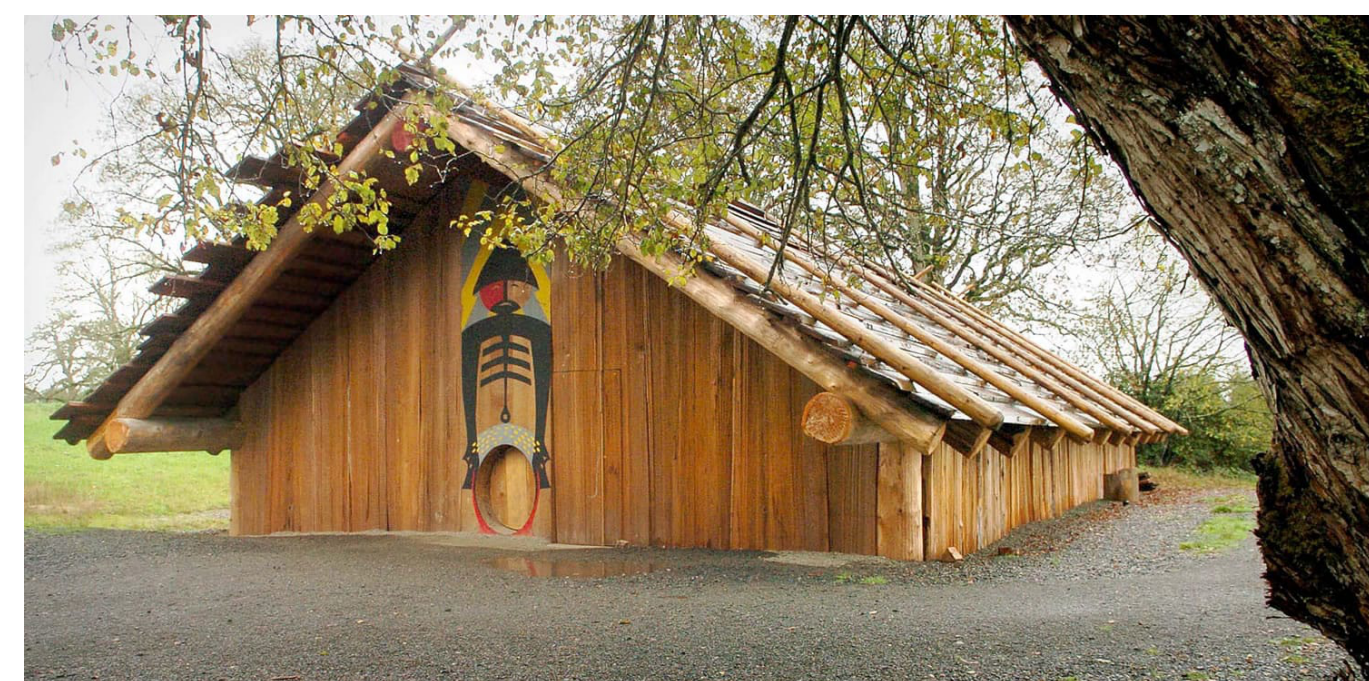


EAST ELEVATION AND COURTYARD



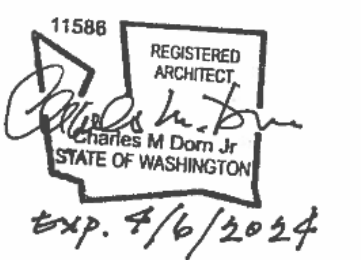
SOUTH ELEVATION

EXTERIOR BUILDING RENDERINGS: RENDERINGS ARE PROVIDED TO SHOW DESIGN INTENT ONLY. REFER TO ELEVATIONS AND SITE PLANS FOR DIMENSIONS, MATERIAL CALLOUTS, AND PROPOSED LANDSCAPING



REGIONAL DESIGN INSPIRATION

STAMP



REVISION NO.

DATE

KEY PLAN - (NTS)

## WOODLAND LIBRARY

FORT VANCOUVER REGIONAL LIBRARIES  
411 LAKESHORE DRIVE  
WOODLAND, WA. 98674

ISSUANCE  
TYPE II SITE PLAN REVIEW

PROJECT NUMBER  
01923

DATE  
12/08/2022

SCALE

DRAWING TITLE  
BUILDING RENDERINGS  
AND PRECEDENTS

SHEET NUMBER

# A-300.