

SURVEY NOTES

- EQUIPMENT USED: TOPCON QS AND/OR CARLSON CR2+ ROBOTIC TOTAL STATION AND TOPCON GR3 RTK/GPS
- THIS SURVEY WAS PERFORMED BY FIELD TRAVERSE WITH THE FINAL RESULTS MEETING OR EXCEEDING THE CURRENT TRAVERSE STANDARDS CONTAINED IN W.A.C. 332-130-090. ALL MEASUREMENTS WERE MADE WITH A TOPCON QS ROBOTIC TOTAL STATION IN ACCORDANCE WITH THE EQUIPMENT MANUFACTURER'S SPECIFICATIONS.
- IN ACCORDANCE WITH THE REVISED CODE OF WASHINGTON (R.C.W.) 58.09 AND THE WASHINGTON ADMINISTRATIVE CODE (W.A.C.) 332-130, THIS SURVEY MAY DEPICT OCCUPATIONAL INDICATORS THAT DIFFER FROM THE DEEDED LOT LINES. THESE INDICATORS, IF AT ALL PRESENT, MAY REPRESENT A POTENTIAL FOR CLAIMS OF UNWRITTEN TITLE. THIS SURVEY DOES NOT PURPORT TO RESOLVE SUCH ITEMS.
- FIELD WORK PERFORMED IN FEBRUARY 2020, UNDER SITTS & HILL JOB NUMBER 18718.
- UTILITIES AS SHOWN HEREON ARE BASED ON FIELD SURVEY OBSERVATION OF UTILITY LOCATE SERVICES PERFORMED BY MOUNTAIN VIEW LOCATING LLC IN FEBRUARY 2020 FOR THIS SURVEY. NO RECORD UTILITY RESEARCH HAS BEEN PERFORMED. UTILITIES OTHER THAN SHOWN MAY EXIST ON THE SITE. THE SURVEYOR DOES NOT WARRANT THAT THE UNDERGROUND UTILITIES SHOWN ARE IN THE EXACT LOCATION INDICATED. THE SURVEYOR DOES CERTIFY THAT THEY ARE SHOWN AS ACCURATELY AS POSSIBLE FROM FIELD SURVEY AND PAINTED UTILITY LOCATE LINES. COLLECTION AND DEPICTION OF EXISTING SUBSURFACE UTILITY DATA IS CONSISTENT WITH QUALITY LEVEL 8 OF THE ASCE STANDARD GUIDELINES 38-02.
- THIS SURVEY COMPLIES WITH W.A.C. 332-130-145. THE CONTOURS DEPICTED HEREON ARE BASED ON DATA FROM DIRECT FIELD MEASUREMENTS. SPOT ELEVATIONS ARE BASED ON DIRECT FIELD MEASUREMENTS AND ARE DEPICTED FOR REFERENCE. THE PURPOSE OF THE TOPOGRAPHIC MAP IS TO SERVE AS A BASE MAP FOR CONTEMPLATED SITE IMPROVEMENTS AND DESIGN.
- PBS ENGINEERING & ENVIRONMENTAL HAS SUPPLEMENTED THE BOUNDARY RESOLUTION AND RELIED UPON THE TITLE INFORMATION NOTED IN THE ALTA COMMITMENT FOR TITLE INSURANCE ISSUE BY FIDELITY NATIONAL TITLE, COMMITMENT NUMBER 612885151.
- THE SITE IS CURRENTLY GOING THROUGH A PARTITION PLAT PROCESS TO CREATE TWO LOTS. THE PROPOSED LIBRARY WILL BE CONSTRUCTED ON LOT 1.

HORIZONTAL DATUM

WASHINGTON STATE PLANE COORDINATE SYSTEM, SOUTH ZONE, NAD 83/2011
 BASED ON GPS OBSERVATION UTILIZING THE WASHINGTON STATE REFERENCE NETWORK (WSRN)
 MEASURED SOUTH 71°27'02" EAST BETWEEN FOUND MONUMENTS ALONG BUCKEYE STREET AT THE INTERSECTIONS WITH DALE ST. & HOFFMAN ST.

VERTICAL DATUM

ORIGINAL TOPOGRAPHIC DATA PROVIDED BY SITTS & HILL ENGINEERS, INC. WAS BASED ON NAVD 88. THE SURFACE HAS BEEN LOWERED BY 3.49 FEET TO MATCH THE VERTICAL DATUM NGVD 29.

VERTICAL DATUM NOTE BY SITTS & HILL ENGINEERS, INC.
 NAVD 88
 BASED ON GPS OBSERVATION UTILIZING THE WSRN WITH NGS GEIOD2012B LOADED

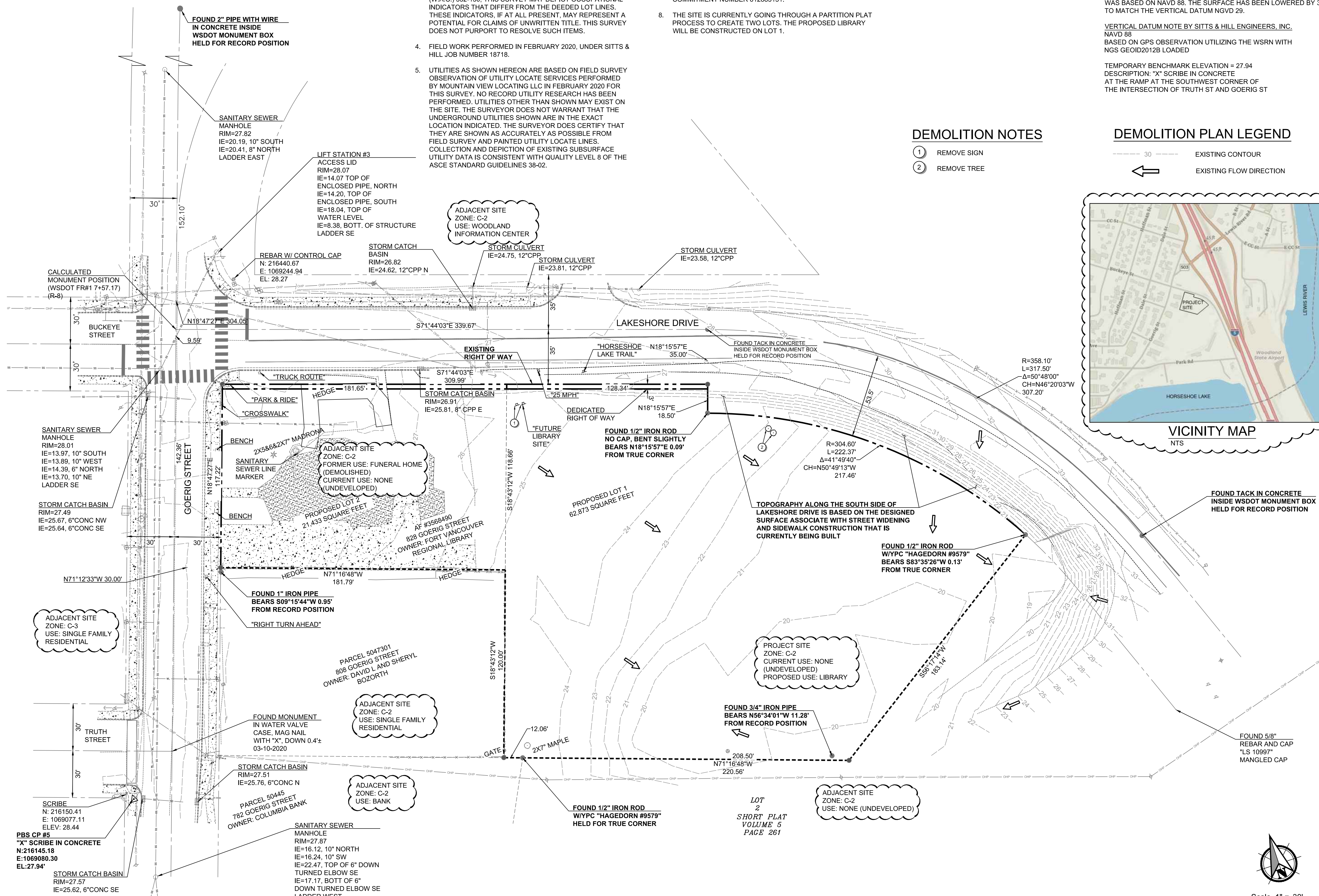
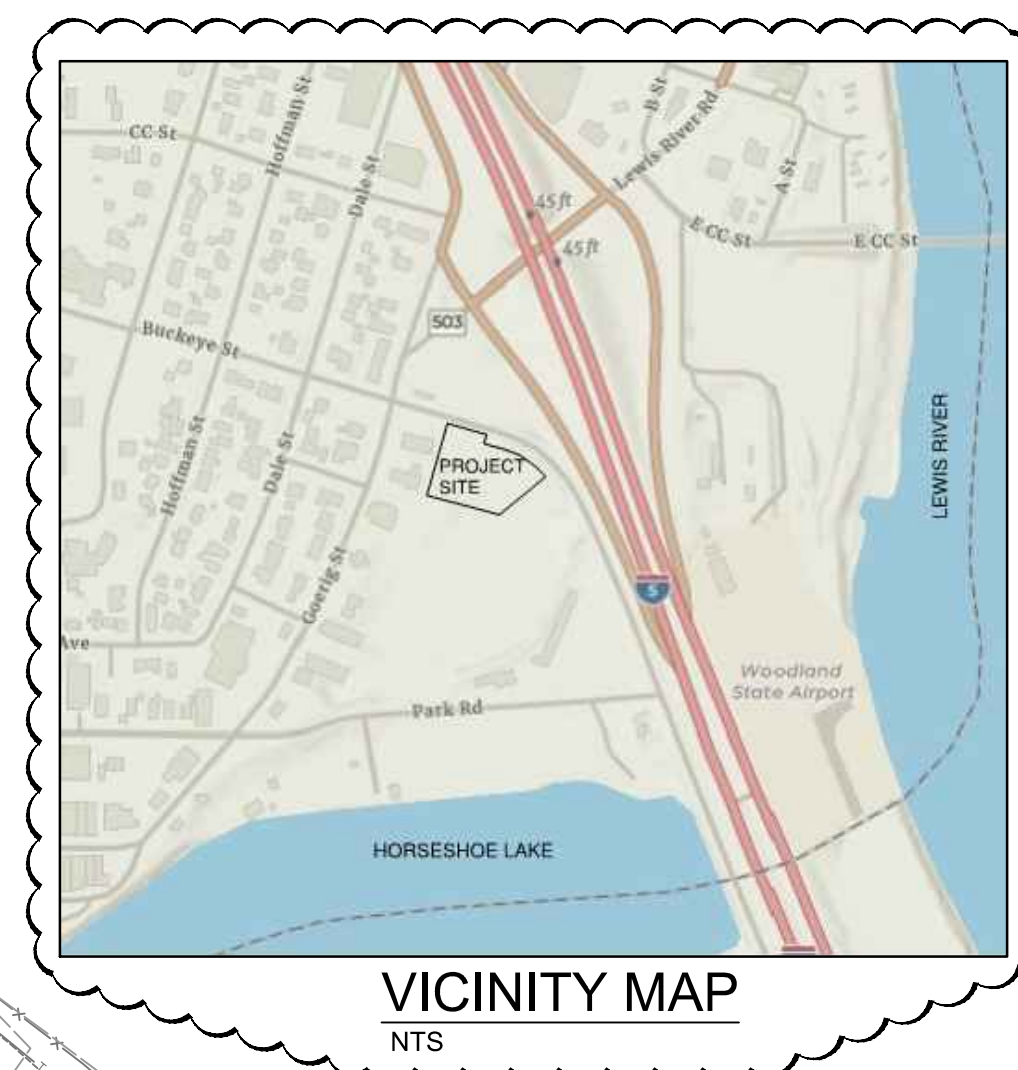
TEMPORARY BENCHMARK ELEVATION = 27.94
 DESCRIPTION: "X" SCRIBE IN CONCRETE AT THE RAMP AT THE SOUTHWEST CORNER OF THE INTERSECTION OF TRUTH ST AND GOERIG ST

DEMOLITION NOTES

- REMOVE SIGN
- REMOVE TREE

DEMOLITION PLAN LEGEND

- 30 EXISTING CONTOUR
- EXISTING FLOW DIRECTION

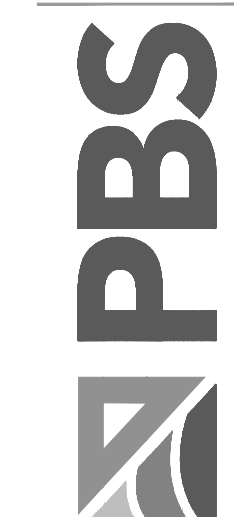


ARCHITECTS

HACKER
 555 SE MLK Jr. Blvd. Suite 501, Portland, OR 97214

CONSULTANT

PBS Engineering and
 Environmental
 1325 SE Tech Center Drive
 Suite 140
 Vancouver, WA 98683
 503.281.2626
 pbsusa.com



STAMP



REVISION NO. DATE
 ADDENDUM 1 12-20-22

KEY PLAN - (NTS)

WOODLAND LIBRARY

FORT VANCOUVER REGIONAL LIBRARIES
 411 LAKESHORE DRIVE
 WOODLAND, WA, 98674

ISSUANCE
 TYPE II SITE PLAN REVIEW

PROJECT NUMBER
 71959.000

DATE
 12/08/2022

SCALE

DRAWING TITLE
EXISTING CONDITIONS AND DEMOLITION PLAN

SHEET NUMBER

C-01

