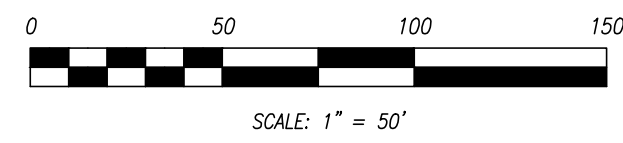




VICINITY MAP  
NO SCALE



**LEGEND**

- FOUND MONUMENT 1/2"x24" I.R. W/YPC "BLUHM LS 29269" UNLESS NOTED OTHERWISE
- ⊙ SITE BENCHMARK
- ⊙ DECIDUOUS TREE
- ⊙ CONIFEROUS TREE
- ⊙ FIRE HYDRANT
- ⊙ POWER POLE
- ⊙ GUY ANCHOR
- ⊙ SANITARY SEWER MAN HOLE
- ⊙ WATER VALVE
- ⊙ WATER METER
- ⊙ WATER SPICKET
- ⊙ SANITARY SEWER CLEANOUT
- ⊙ WELL
- ⊙ SIGN (AS NOTED)
- ⊙ STORM DRAIN MAN HOLE
- ⊙ STORM DRAIN CATCH BASIN
- ⊙ CURB INLET
- ⊙ STORM CULVERT
- ⊙ LIGHT POLE
- ⊙ POWER METER
- ⊙ POWER OUTLET
- SITE BOUNDARY
- EXISTING TAX LOT
- ROAD CENTERLINE
- - - PUBLIC RIGHT-OF-WAY
- - - HOG/BARB WIRE FENCE
- - - STORM WATER LINE
- - - SANITARY SEWER LINE
- - - OVERHEAD POWER LINE
- - - UNDERGROUND POWER LINE
- - - TELEPHONE LINE
- - - WATER LINE
- - - CABLE/TV LINE
- ▨ ASPHALT
- ▨ CONCRETE
- ▨ GRAVEL

**BASIS OF BEARINGS**

ASSUMED HOLDING A BEARING OF S 82°49'55" E BETWEEN THE FOUND IRON RODS ON THE NORTH LINE OF THE SITE.

**VERTICAL DATUM**

NAVD 88 BASED ON WSDOT BM X533 (104081), ELEVATION: 30.066'

**BENCHMARK:**

SITE BENCHMARK 1:  
SET MAG NAIL WITH WASHER IN CURB AT THE SW QUAD OF LEWIS RIVER ROAD AND SALMON STREET.  
ELEVATION = 39.84'

SITE BENCHMARK 2:  
SET 1/2" REBAR WITH RED PLASTIC CAP "OLSON ENG CONTROL" 21" NORTH OF GRAVEL ROAD AND 75' E. OF LEWIS RIVER RD.  
ELEVATION = 37.12'

**NOTES**

THE LOCATION OF EXISTING UTILITY FACILITIES HAS NOT BEEN RESEARCHED. UNDERGROUND UTILITIES SHOWN HEREON ARE FROM TIES TO UTILITY PAINT MARKS MADE IN RESPONSE TO "ONE-CALL CONCEPTS" UTILITY NOTIFICATION CENTER. THE SURVEYOR ASSUMES NO RESPONSIBILITY FOR THE ACCURACY OF SUCH UNDERGROUND UTILITIES BY THE RESPECTIVE UTILITY OWNERS, NOR THE EXISTENCE OF BURIED OBJECTS WHICH ARE NOT SHOWN ON THIS PLAN.

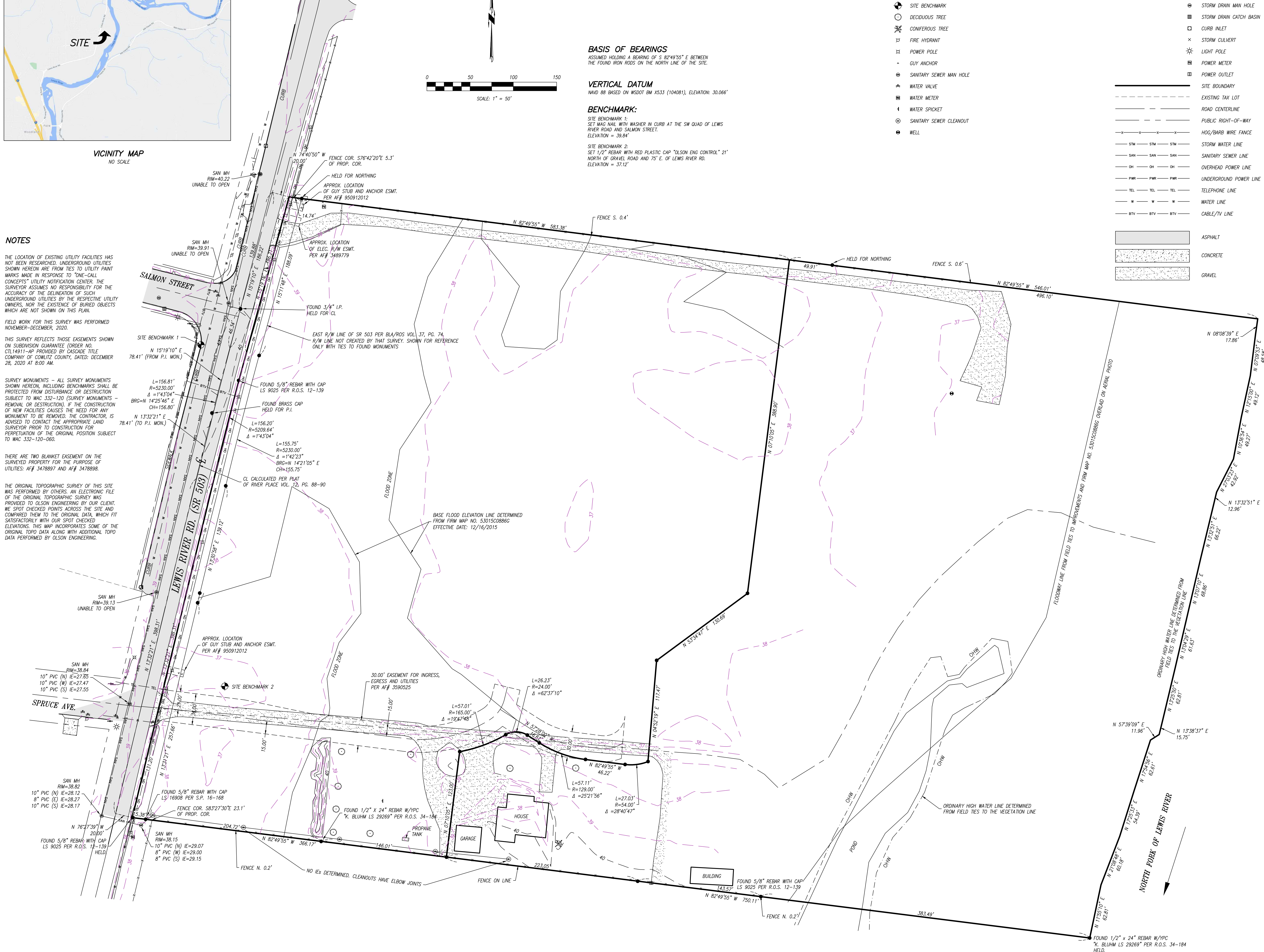
FIELD WORK FOR THIS SURVEY WAS PERFORMED NOVEMBER-DECEMBER, 2020.

THIS SURVEY REFLECTS THOSE EASEMENTS SHOWN ON SUBDIVISION GUARANTEE (ORDER NO. CTL14911-AP PROVIDED BY CASCADE TITLE COMPANY OF COWLITZ COUNTY, DATED: DECEMBER 28, 2020 AT 8:00 AM.

SURVEY MONUMENTS - ALL SURVEY MONUMENTS SHOWN HEREON, INCLUDING BENCHMARKS SHALL BE PROTECTED FROM DISTURBANCE OR DESTRUCTION SUBJECT TO WAC 332-120 (SURVEY MONUMENTS - REMOVAL OR DESTRUCTION). IF THE CONSTRUCTION OF NEW FACILITIES CAUSES THE NEED FOR ANY MONUMENT TO BE REMOVED, THE CONTRACTOR, IS ADVISED TO CONTACT THE APPROPRIATE LAND SURVEYOR PRIOR TO CONSTRUCTION FOR PERPETUATION OF THE ORIGINAL POSITION SUBJECT TO WAC 332-120-060.

THERE ARE TWO BLANKET EASEMENT ON THE SURVEYED PROPERTY FOR THE PURPOSE OF UTILITIES: AF# 3478897 AND AF# 3478898.

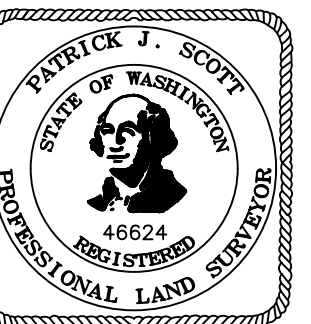
THE ORIGINAL TOPOGRAPHIC SURVEY OF THIS SITE WAS PERFORMED BY OTHERS. AN ELECTRONIC FILE OF THE ORIGINAL TOPOGRAPHIC SURVEY WAS PROVIDED TO OLSON ENGINEERING BY OUR CLIENT. WE SPOT CHECKED POINTS ACROSS THE SITE AND COMPARED THEM TO THE ORIGINAL DATA, WHICH FIT SATISFACTORILY WITH OUR SPOT CHECKED ELEVATIONS. THIS MAP INCORPORATES SOME OF THE ORIGINAL TOPO DATA ALONG WITH ADDITIONAL TOPO DATA PERFORMED BY OLSON ENGINEERING.



**CLIENT:**  
QUAIL DEVELOPMENT LLC  
4501 NE MINNEHAHA  
VANCOUVER, WA  
98661

EXISTING CONDITIONS SURVEY FOR:  
**HERON MEADOWS**

NE 1/4 NE 1/4 S 18, SE 1/4 SE 1/4 S 7, SW 1/4 SW 1/4 S 8, AND NW 1/4 NW 1/4 S 17, T. 5 N., R. 1 E., W.M. COWLITZ COUNTY, WA  
**OLSON ENGINEERS**  
LAND SURVEYORS  
ENGINEERING INC. 222 E. EVERGREEN BLVD., VANCOUVER, WA 98660



**CHANGES / REVISIONS**

DESCRIPTION	DATE

DESIGNED: \_\_\_\_\_

DRAWN: M.K.

CHECKED: P.J.S.

DATE: NOVEMBER, 2021

SCALE: 1" = 50'

COPYRIGHT 2021, OLSON ENGINEERING, INC.

SHEET SIZE: 24x36

JOB NO. 10121.01.01

SHEET

1 of 1

FILE: J:\DATA\101000\1010121\10121\10121\10121.SXD;DWG