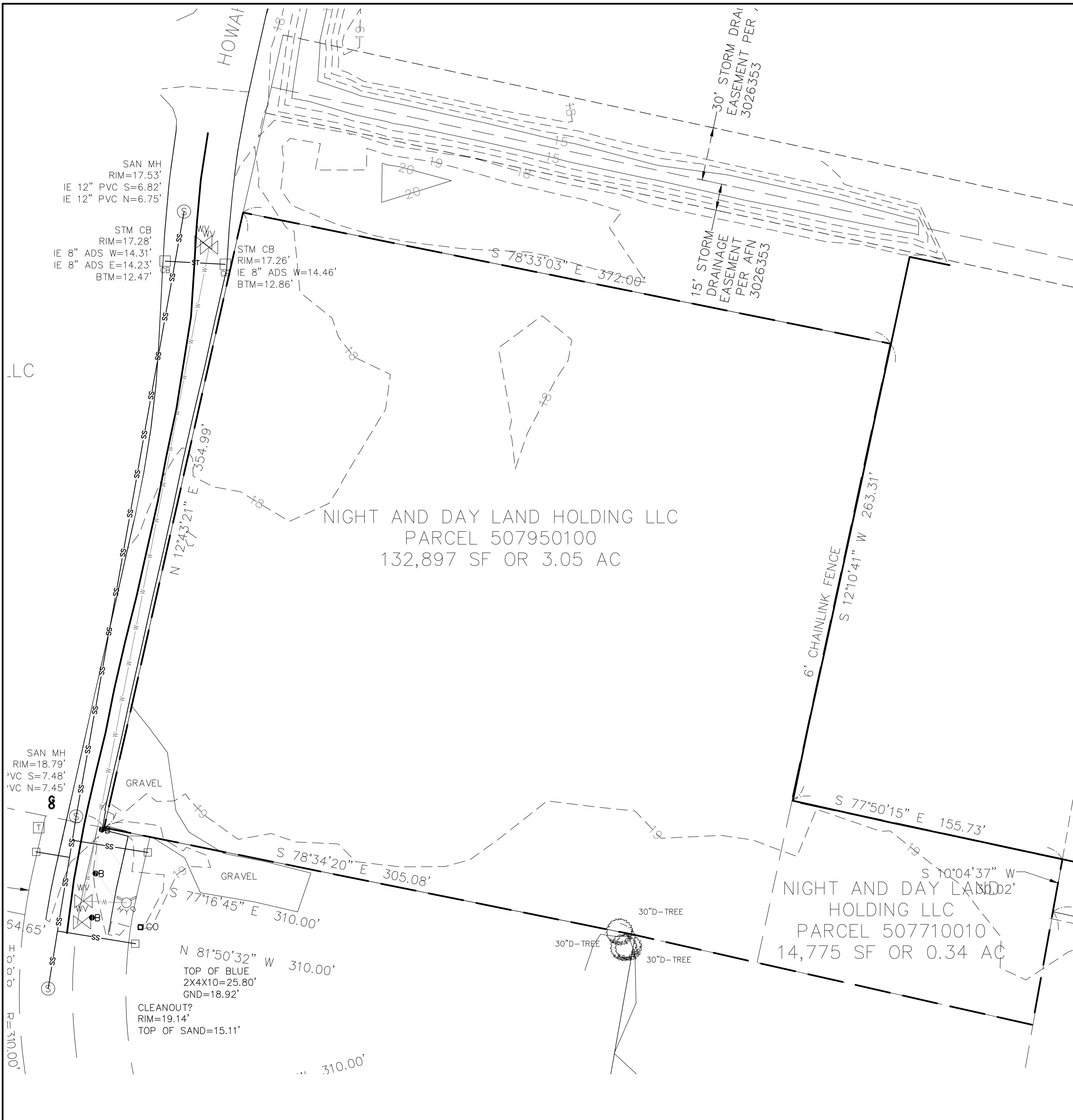


© SGA ENGINEERING PLLC - DATE PLOTTED: Aug. 29, 2022 - 11:36 AM SGA DRAWING FILE: W:\DWG\2105 - NIGHT & DAY FURNITURE\DRAWINGS\2-PRELIM SHEET SET\PREL10 EXISTING CONDITIONS.DWG



NIGHT AND DAY FURNITURE

BEING A PORTION OF THE SOUTHEAST QUARTER OF SECTION 14, TOWNSHIP 5 NORTH,
RANGE 1 WEST OF THE WILLAMETTE MERIDIAN, COWLITZ COUNTY, WASHINGTON

PRELIMINARY SITE PLAN
JULY 2022

APPLICANT:

NIGHT AND DAY FURNITURE
ATTN: MIKE GALLAWA
3115 NE 108TH AVE
VANCOUVER, WA 98682
PH: 360.573.3309
EM: MIKE@NIGHTANDDAYFURNITURE.COM

PROPERTY ADDRESS:

HOWARD WAY, NO SITE ADDRESS YET
WOODLAND, WA 98674
PARCEL# 507950100 & 507710010
OWNER:
NIGHT AND DAY LAND HOLDING

CONTACT PERSON:

SGA ENGINEERING, PLLC
ATTN: SCOTT TAYLOR
2005 BROADWAY STREET
VANCOUVER, WA 98663
PH: 360.993.0911
FX: 360.993.0912
EM: STAYLOR@SGAENGINEERING.COM

EXISTING SITE INFORMATION

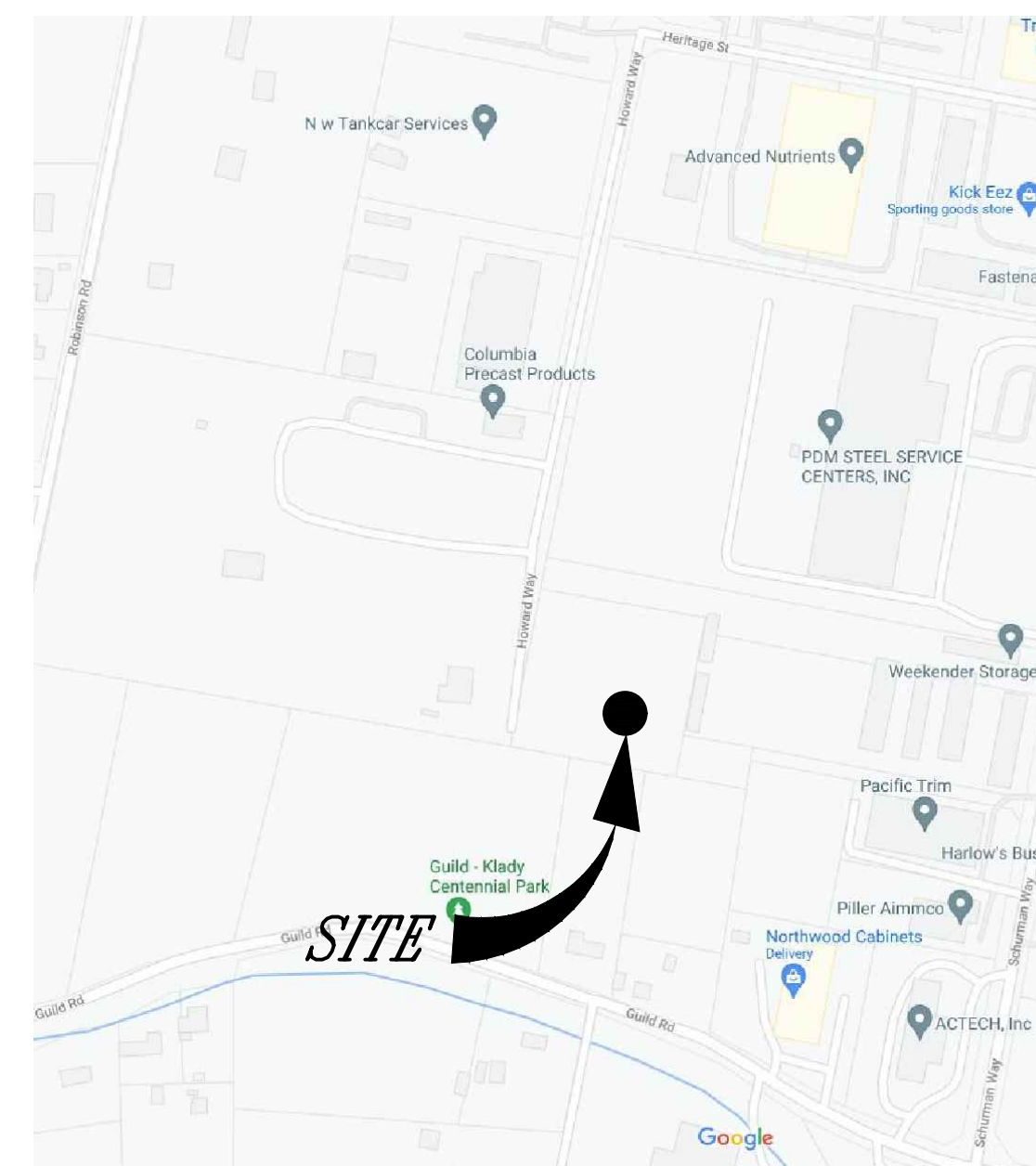
EXISTING PARCEL NUMBERS	507950100 & 507710010
CURRENT USE	VACANT LAND
ZONING DESIGNATION	I-1 LIGHT INDUSTRIAL
GROSS SITE AREA	3.83 ACRES 147,422 S.F.
TRANSIT ROUTES	NEAREST STOP IS UNKNOWN
EXISTING WATER AND SEWER	PUBLIC SEWER FROM CITY PUBLIC WATER FROM CITY

ENVIRONMENTAL CONDITIONS

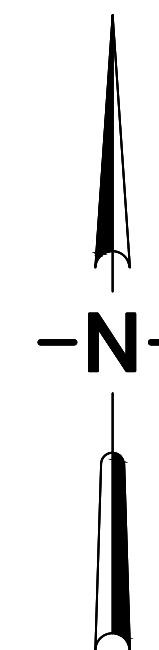
THE SITE DOES NOT CONTAIN ANY CRITICAL AREAS. THE SITE IS LOCATED IN THE COLUMBIA RIVER WATERSHED. THE SITE WAS EVALUATED FOR WETLANDS BY ECOLOGICAL LAND SERVICES. NO WETLANDS WERE IDENTIFIED ON THE SITE.

EXISTING CONDITIONS DISCLAIMER

THE EXISTING CONDITIONS SHOWN ON THIS PLAN WERE OBTAINED FROM INFORMATION PROVIDED BY MINISTER & GLAESER SURVEYING AND PUBLIC SOURCES. SGA ENGINEERING, PLLC DOES NOT GUARANTEE THE ACCURACY OF THIS INFORMATION.



VICINITY MAP
NTS



ENGINEERING & DESIGN
CIVIL ENGINEERING ~ LAND PLANNING
DEVELOPMENT SERVICES
LANDSCAPE ARCHITECTURE

2005 BROADWAY
VANCOUVER, WA 98663
PHONE (360)993-0911
FAX (360)993-0912



EXISTING CONDITIONS

NIGHT AND DAY FURNITURE

WASHINGTON

CITY OF WOODLAND

PRELIMINARY

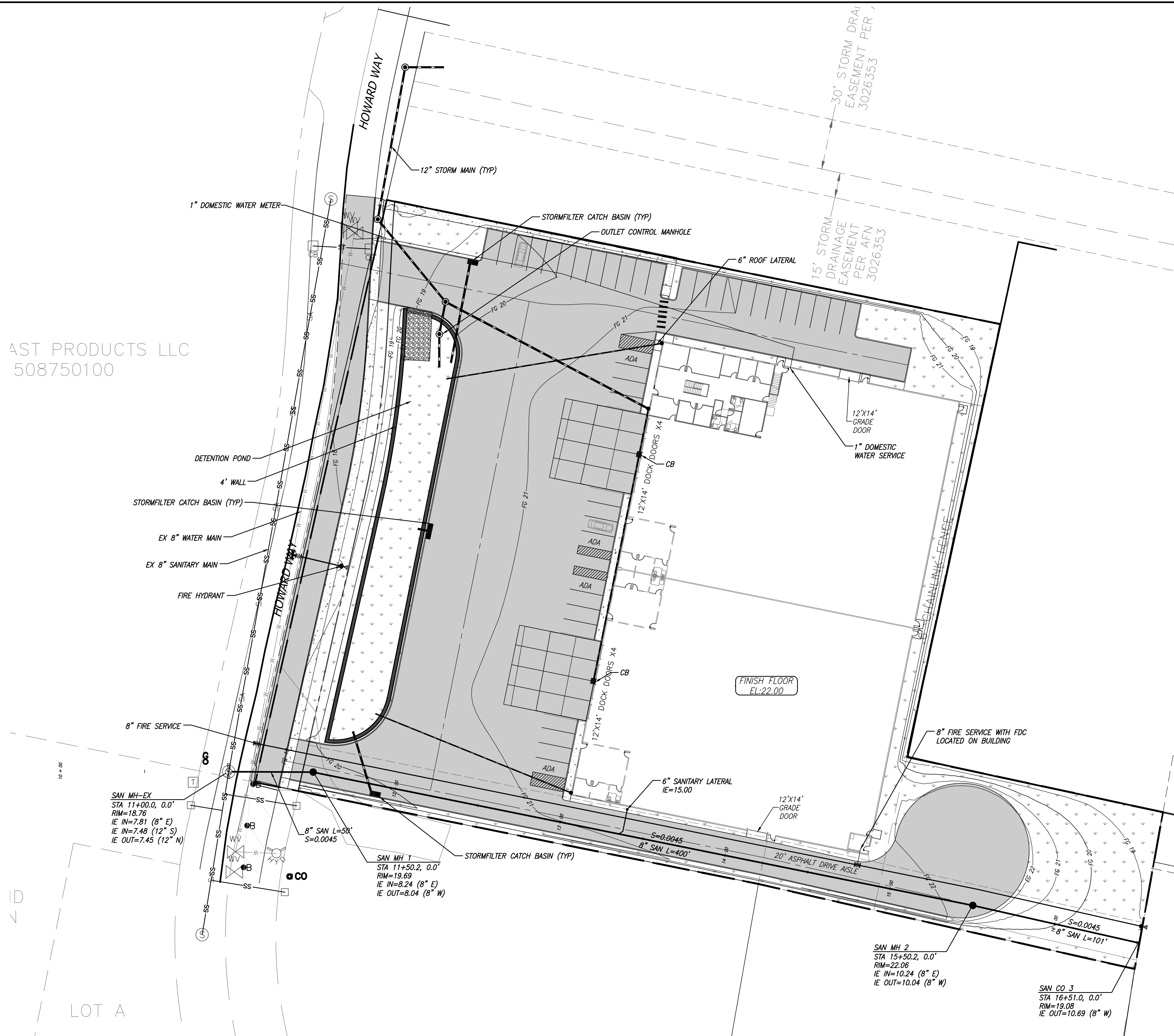
REVISIONS

NO.	DATE	DESCRIPTION

DESIGNED BY: SAT/JAI
DRAWN BY: SAT/JAI
CHECKED BY: JTM
SCALE: 1" = 30'

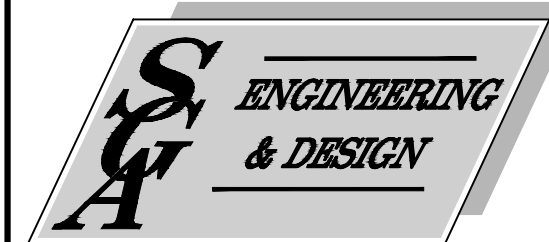
JOB NUMBER: 2105 SHEET: PRE1.0

© SCA ENGINEERING PLLC - DATE PLOTTED: Aug. 29, 2022 - 2:59 PM SCA DRAWING FILE: W:\DWG\2105 - NIGHT & DAY FURNITURE DRAWINGS\2-PRELIM SHEET SET\PRE3.0 PRELIMINARY UTILITY PLAN.DWG



AST PRODUCTS LLC
508750100

LOT A



CIVIL ENGINEERING ~ LAND PLANNING
DEVELOPMENT SERVICES
LANDSCAPE ARCHITECTURE

2005 BROADWAY
VANCOUVER, WA 98663
PHONE (360)993-0911
FAX (360)993-0912



PRELIMINARY UTILITY PLAN

NIGHT AND DAY FURNITURE

WASHINGTON

CITY OF WOODLAND

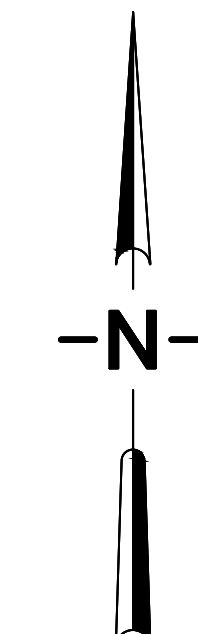
PRELIMINARY

REVISIONS

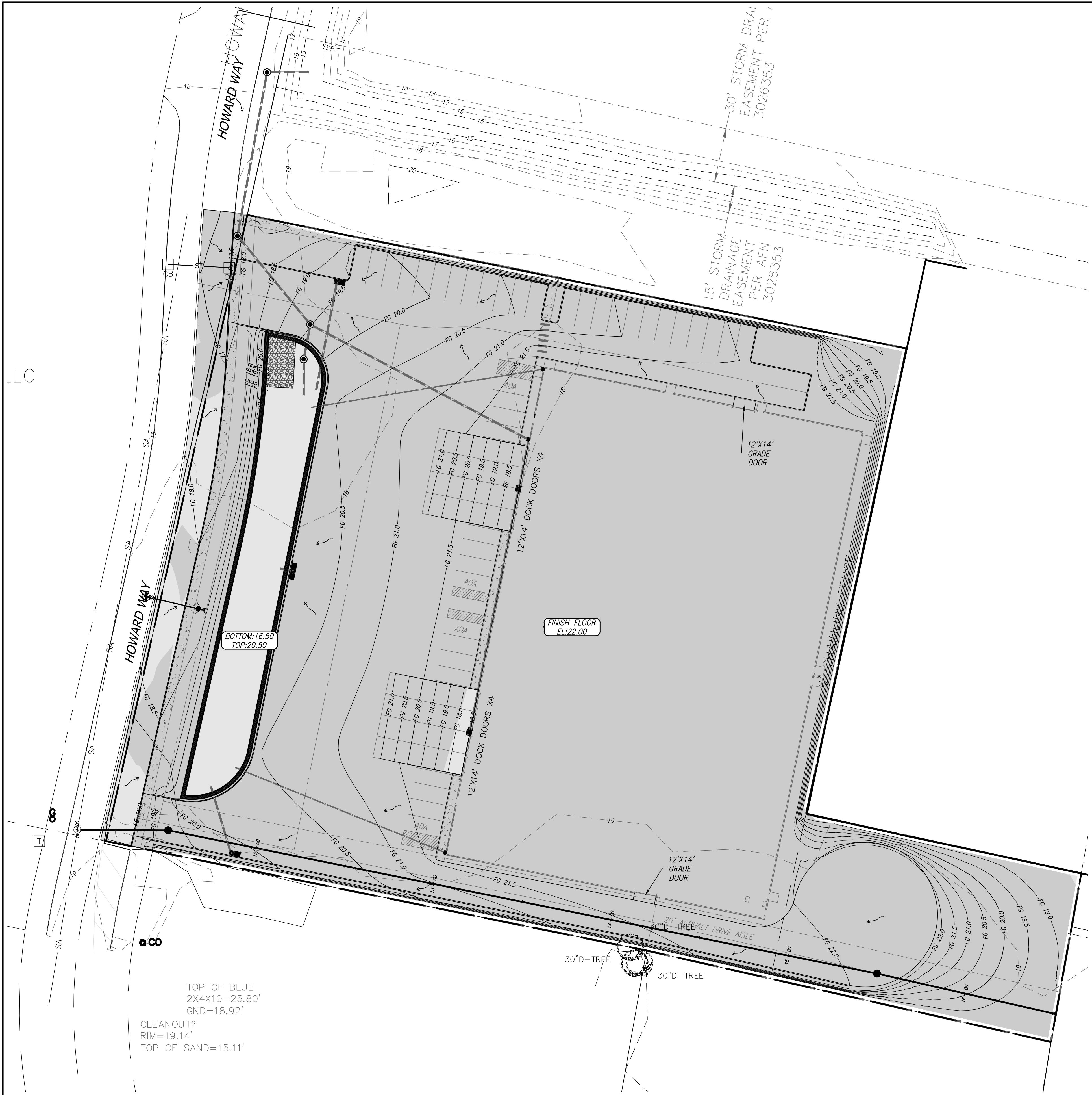
DESIGNED BY: SAT/JAI
DRAWN BY: SAT/JAI
CHECKED BY: JTM
SCALE: 1" = 30'

JOB NUMBER
2105

SHEET
PRE3.0

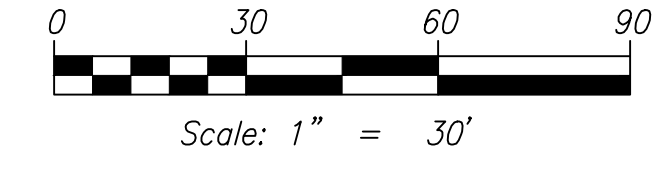
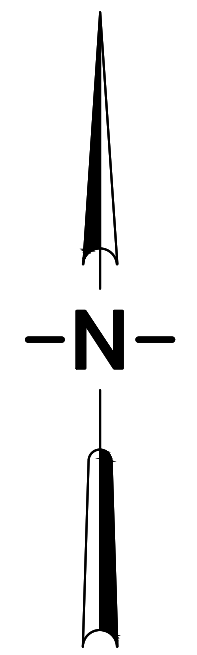


© SCA ENGINEERING PLLC - DATE PLOTTED: Aug. 29, 2022 - 1:46 PM SCA DRAWING FILE: W:\DWG\2105 - NIGHT & DAY FURNITURE DRAWINGS\4-EARLY GRADING SET\GRD4.0 GRADING AND EROSION CONTROL PLAN.DWG



LEGEND

	TEMPORARY STORM INLET PROTECTION (PER DETAIL E-16)		GRAVEL CONSTRUCTION ENTRANCE (PER DETAIL E-05)
	FILL AREA		TEMPORARY SEDIMENT TRAP (PER DETAIL E-22)
	CUT AREA		TEMPORARY SILT FENCE (PER DETAIL E-20)
	FLOW ARROW		FG 100 FINISHED GRADE CONTOURS
			100- - - - EXISTING MAJOR CONTOURS



SCA ENGINEERING & DESIGN
 CIVIL ENGINEERING ~ LAND PLANNING
 DEVELOPMENT SERVICES
 LANDSCAPE ARCHITECTURE

2005 BROADWAY
 VANCOUVER, WA 98663
 PHONE (360)993-0911
 FAX (360)993-0912



PRELIMINARY GRADING PLAN

**NIGHT AND DAY
 FURNITURE**

WASHINGTON

CITY OF WOODLAND

PRELIMINARY

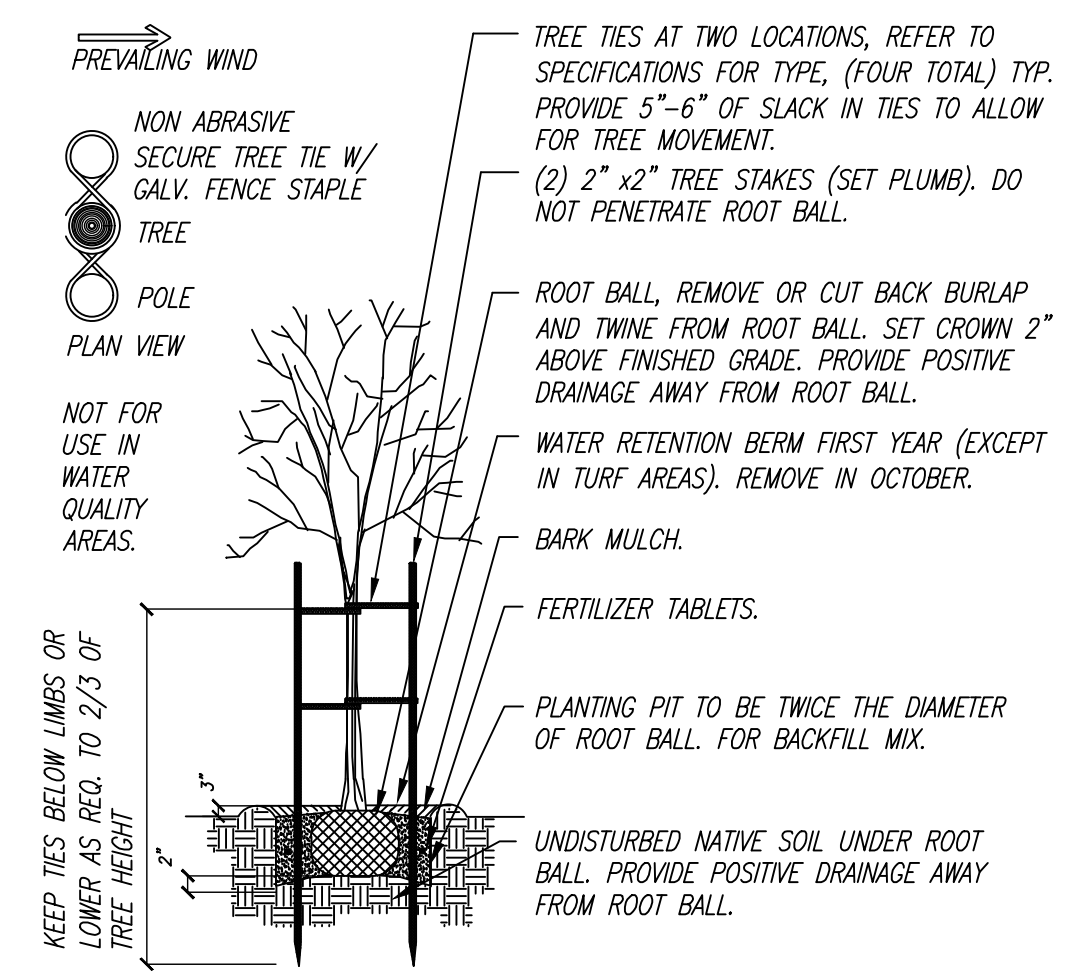
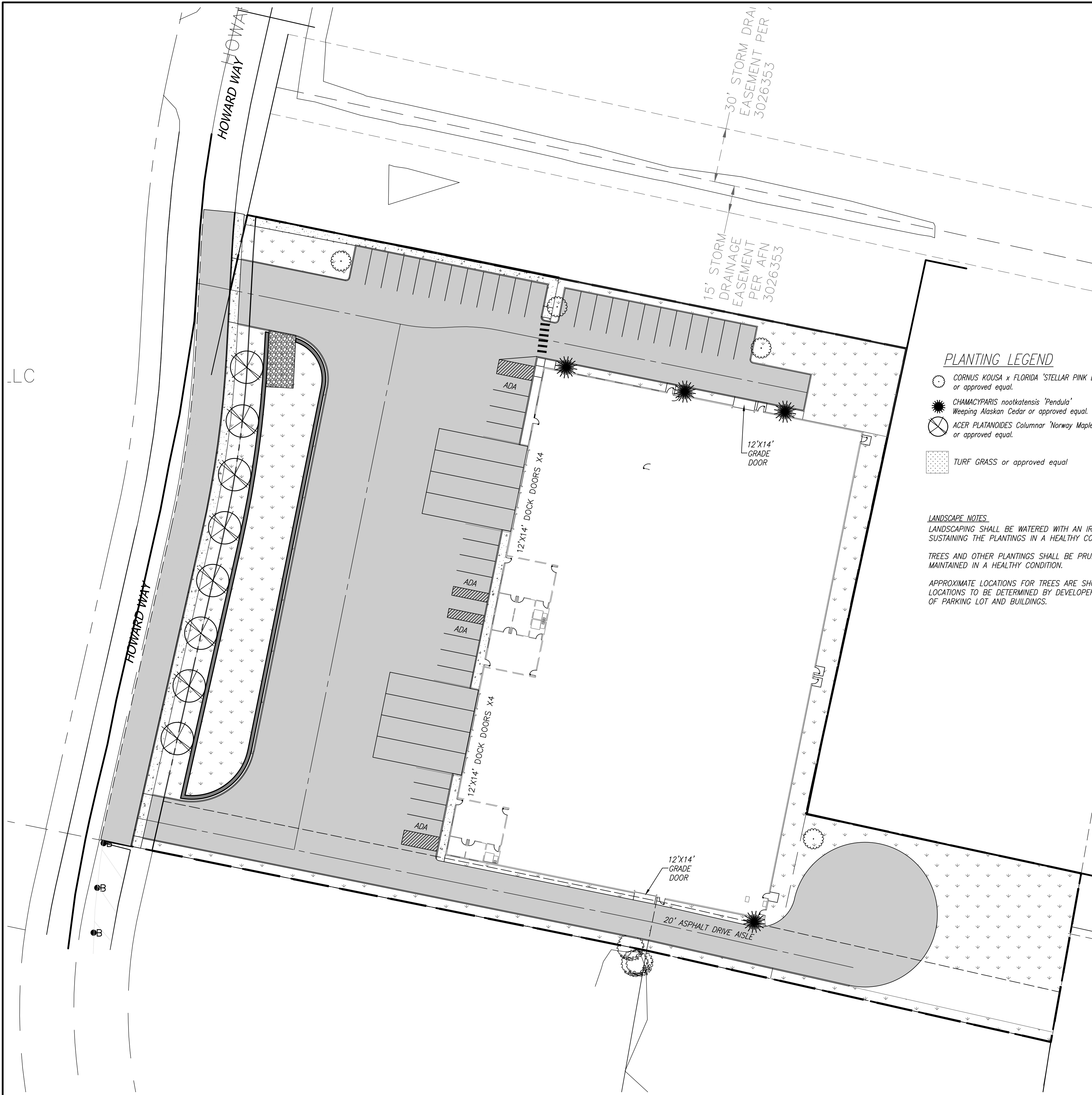
REVISIONS

DESIGNED BY: SAT/JAI
 DRAWN BY: SAT/JAI
 CHECKED BY: JTM
 SCALE: 1" = 30'

JOB NUMBER
2105

SHEET
PRE4.0

© SCA ENGINEERING PLLC - DATE PLOTTED: Aug. 29, 2022 - 3:04 PM SCA DRAWING FILE: W:\DWG\2105 - NIGHT & DAY FURNITURE (DRAWINGS)\2-PREIM SHEET SET\PRELIMINARY LANDSCAPE PLANDWG

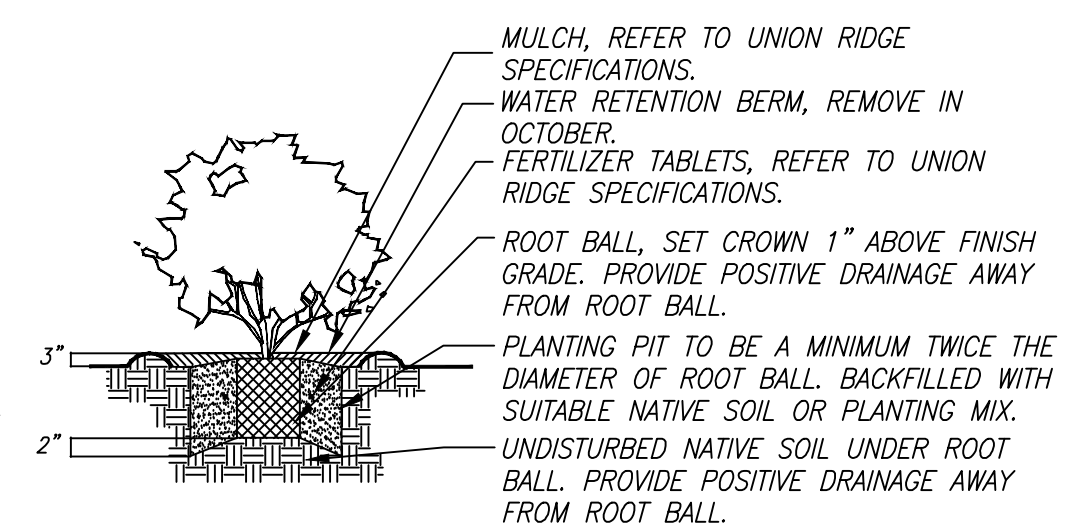


B&B Deciduous Tree Planting Details
NO SCALE

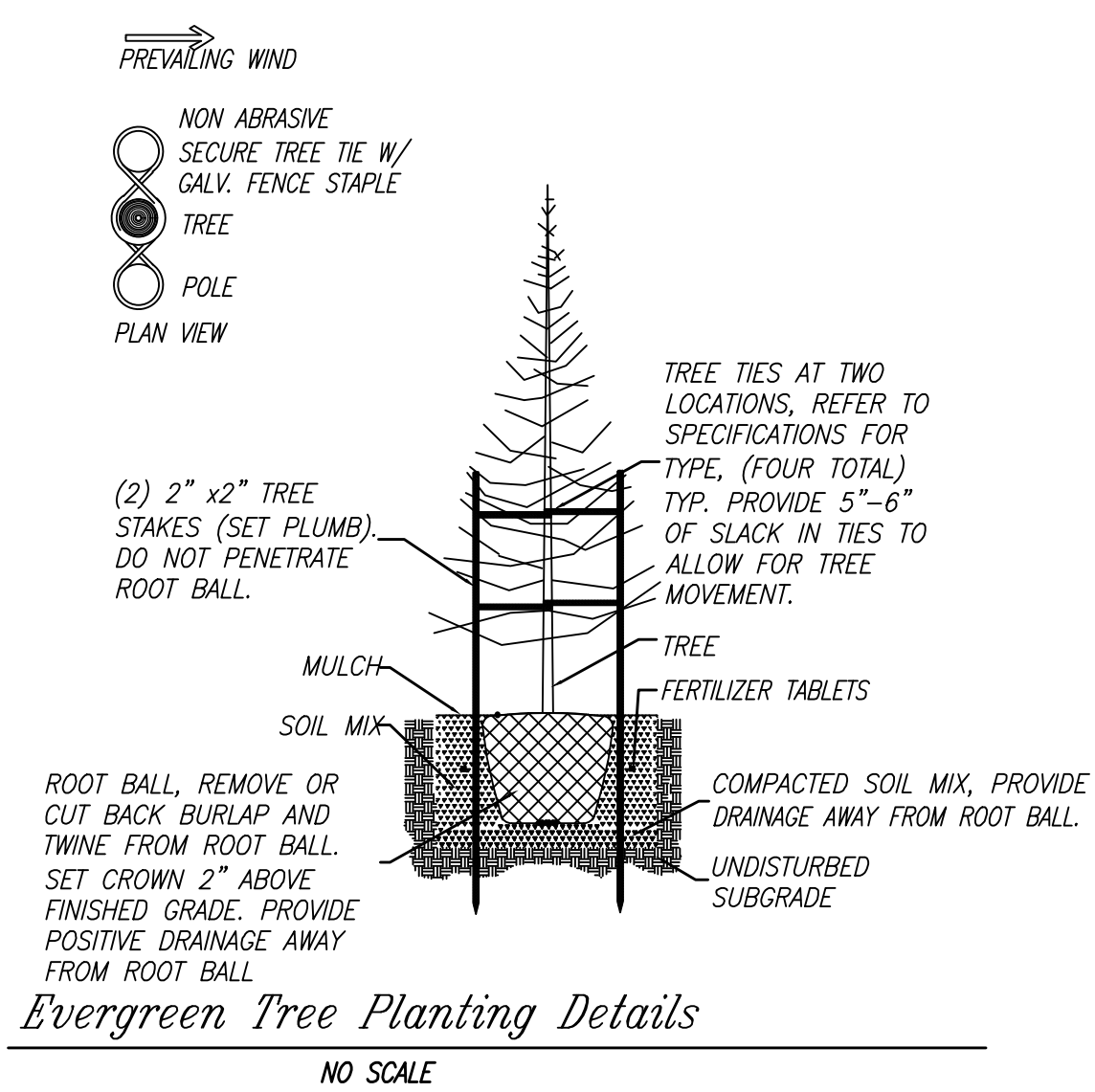
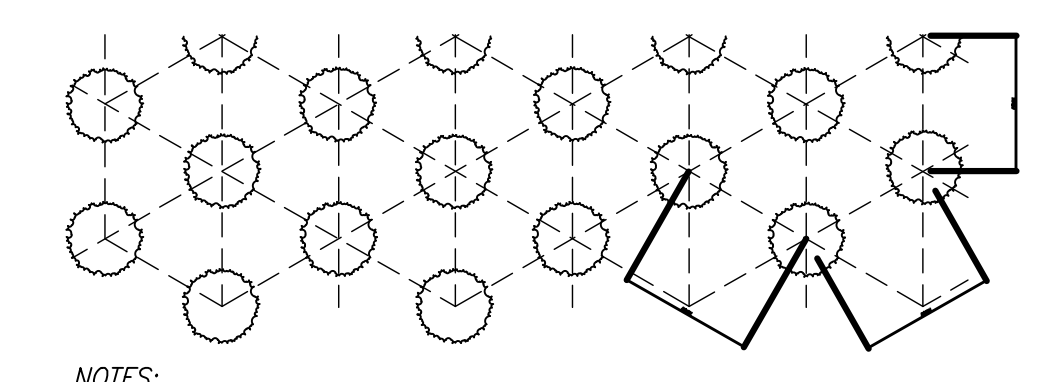
PLANTING LEGEND

Symbol	Plant Name	Size	Spacing	Quantity
○	CORNUS KOUSA x FLORIDA 'STELLAR PINK DOGWOOD' 2" CAL. or approved equal.	2" CAL.	30' O.C.	4
⊗	CHAMACYPARIS nootkatensis 'Pendula' Weeping Alaskan Cedar or approved equal.	5-6' TALL	AS SHOWN	4
⊗	ACER PLATANOIDES Columnar 'Norway Maple' or approved equal.	2" CAL.	30' O.C.	8
▨	TURF GRASS or approved equal	N/A	AS SHOWN	29,112 SF

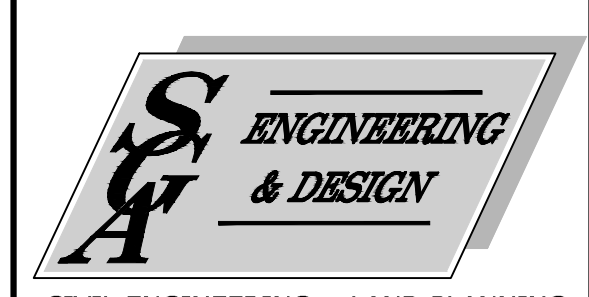
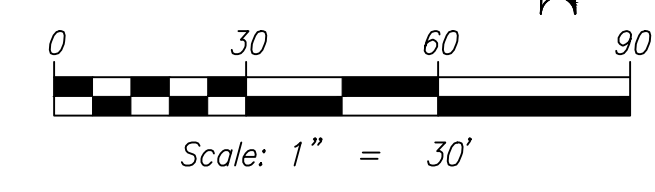
LANDSCAPE NOTES
LANDSCAPING SHALL BE WATERED WITH AN IRRIGATION SYSTEM CAPABLE OF SUSTAINING THE PLANTINGS IN A HEALTHY CONDITION YEAR AROUND.
TREES AND OTHER PLANTINGS SHALL BE PRUNED, WATERED, FERTILIZED AND MAINTAINED IN A HEALTHY CONDITION.
APPROXIMATE LOCATIONS FOR TREES ARE SHOWN ON THE PLAN. EXACT LOCATIONS TO BE DETERMINED BY DEVELOPER OR BUILDER AFTER CONSTRUCTION OF PARKING LOT AND BUILDINGS.



Shrub Planting Details
NO SCALE

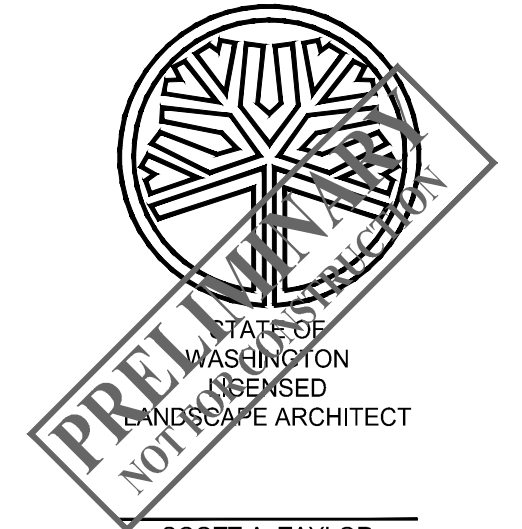


Evergreen Tree Planting Details
NO SCALE



CIVIL ENGINEERING ~ LAND PLANNING
DEVELOPMENT SERVICES
LANDSCAPE ARCHITECTURE

2005 BROADWAY
VANCOUVER, WA 98663
PHONE (360)993-0911
FAX (360)993-0912



PRELIMINARY LANDSCAPE PLAN

**NIGHT AND DAY
FURNITURE**

WASHINGTON

CITY OF WOODLAND

PRELIMINARY

REVISIONS

DESIGNED BY: SAT/JAI
DRAWN BY: SAT/JAI
CHECKED BY: JTM
SCALE: 1" = 30'

JOB NUMBER: 2105 SHEET: PRE5.0