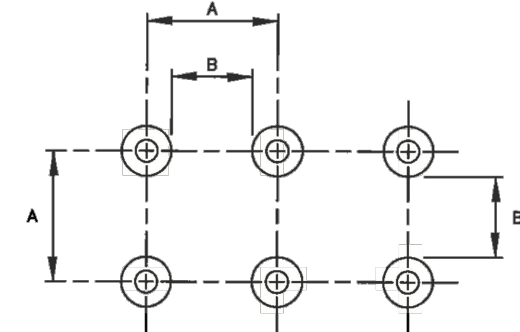
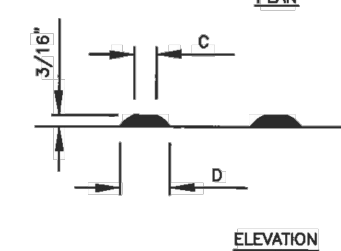


RAMP LIP DETAIL



PLAN



ELEVATION

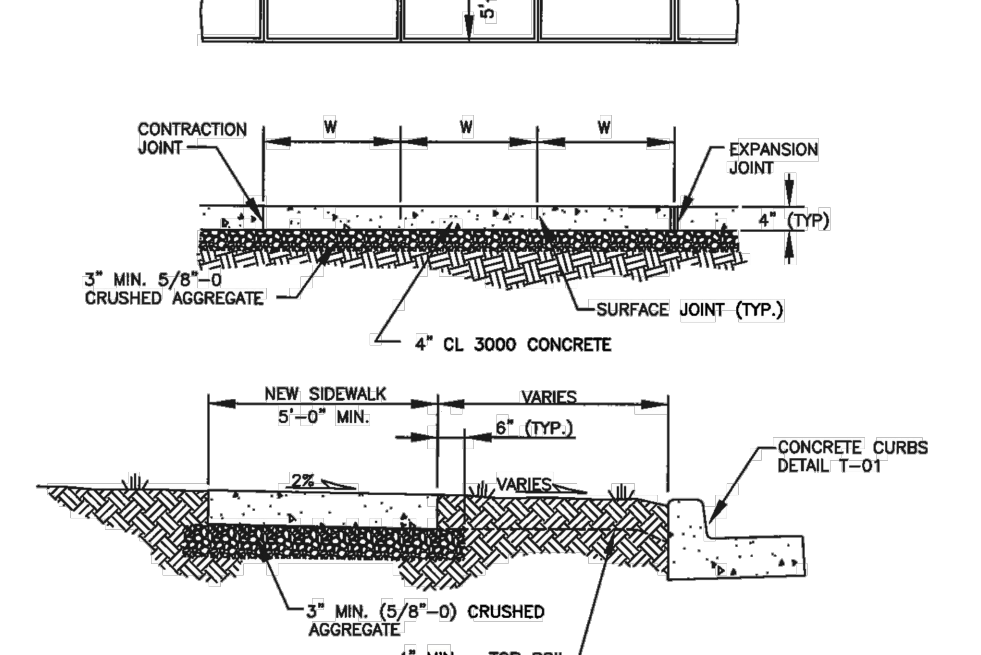
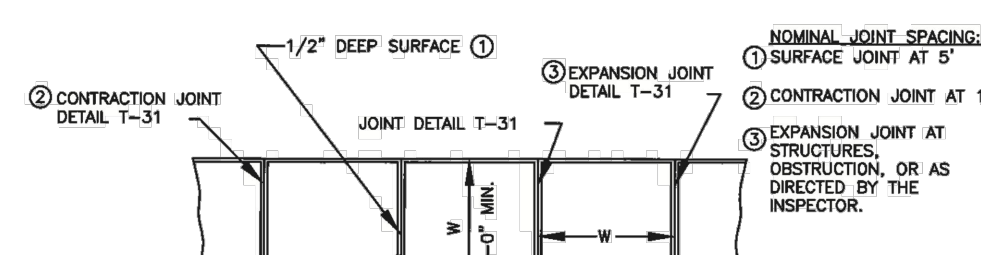
	MIN.	MAX.
A	1 5/8"	2 3/8"
B	9/16"	1 1/2"
C	7/16"	3/4"
D	7/8"	1 7/16"

NOTES:

1. DETECTABLE WARNINGS SHALL BE MANUFACTURED USING THE MATERIALS SPECIFIED ON THE PLAN SHEETS WITH THE SAME DIMENSIONS AND SPACING SHOWN AND INSTALLED PER THE MANUFACTURER'S RECOMMENDED PROCEDURES.
2. DETECTABLE WARNINGS SHALL BE INSET INTO NEW CONCRETE WITH NO AIR TRAPPED UNDERNEATH. GLUED ON OR WALLED DOWN PRODUCTS ARE NOT ACCEPTABLE FOR NEW CONSTRUCTION.
3. SAFETY YELLOW TRUNCATED DOMES ARE REQUIRED UNLESS OTHERWISE APPROVED BY THE PUBLIC WORKS DIRECTOR.

DETECTABLE WARNING PATTERN DETAIL

APPROVED	REVISIONS	DATE	DRAWN	DESIGNED	T-21
<i>Bart Stapp</i>		5/8/19			
PUBLIC WORKS DIRECTOR		DATE			

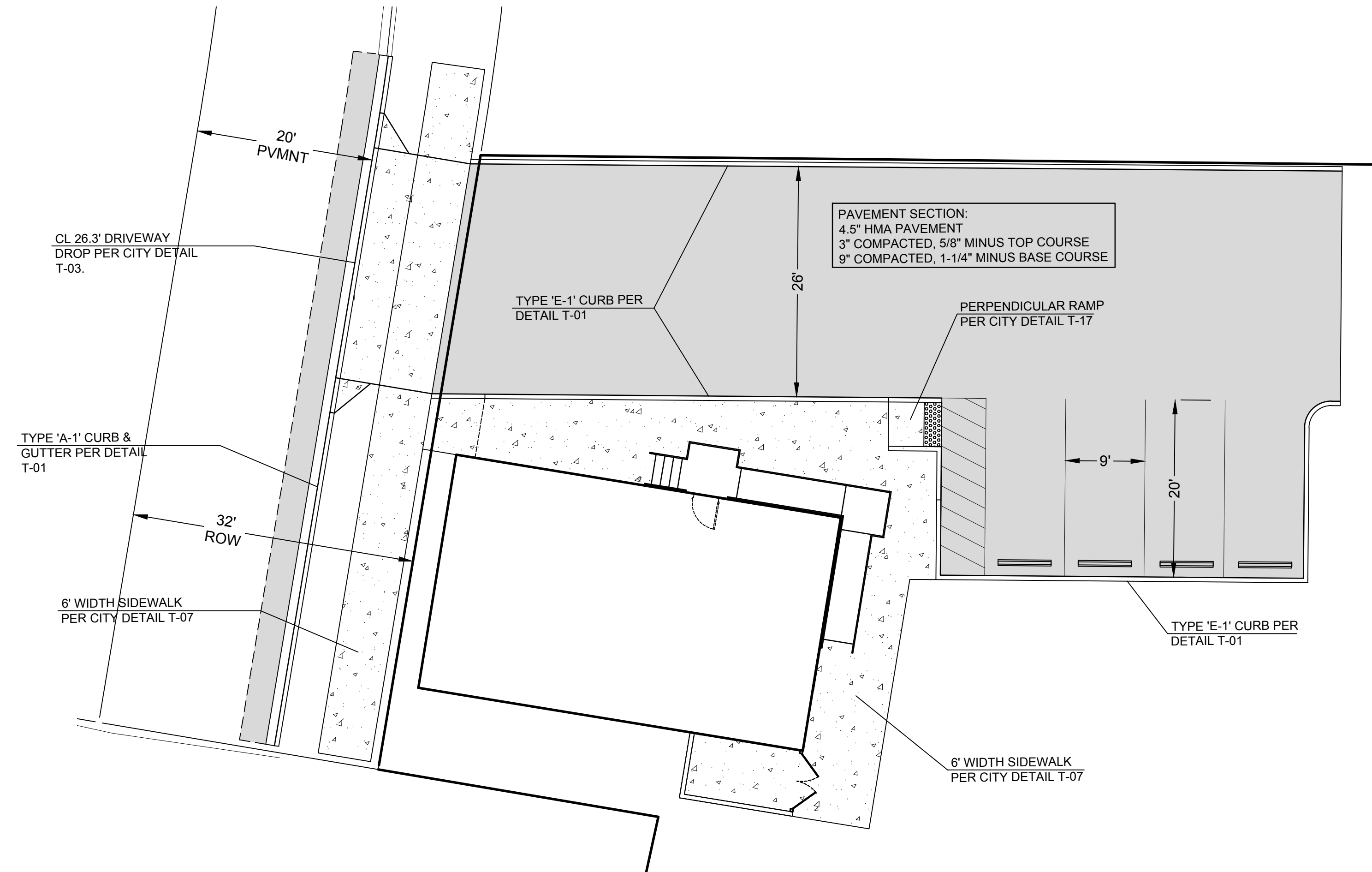


NOTES:

1. CONCRETE SHALL BE 3000 PSI MIN. (CL 3000), 3 1/2" SLUMP (MAX).
2. COMPACT SUBGRADE AND AGGREGATE TO 95% OF MAXIMUM DRY DENSITY (3" MIN).
3. FINISH SHALL BE MEDIUM BROOM PERPENDICULAR TO PEDESTRIAN TRAFFIC UNLESS OTHERWISE DIRECTED.
4. MATCH EXISTING BORDER.
5. SEE CONCRETE JOINTS DETAIL T-31 FOR SURFACE, CONTRACTION, AND EXPANSION JOINTS.
6. ALL EXISTING EDGES SHALL BE SAWCUT.
7. CROSS SLOPE OF PLANTER STRIP SHALL BE 2% (TYP.) AND 4:1 (MAX).

SIDEWALK DETAIL

APPROVED	REVISIONS	DATE	DRAWN	DESIGNED	T-07
<i>Bart Stapp</i>		5/8/19			
PUBLIC WORKS DIRECTOR		DATE			



PRELIMINARY PLANS
(NOT FOR CONSTRUCTION)



Robert Carpenter
ENGINEERING, INC.
Civil Engineering & Consulting
1. (206) 574-6888 | e.carpenter@comcast.net
CEI PROJECT NO: 21-001
CONTRACT NO: -----

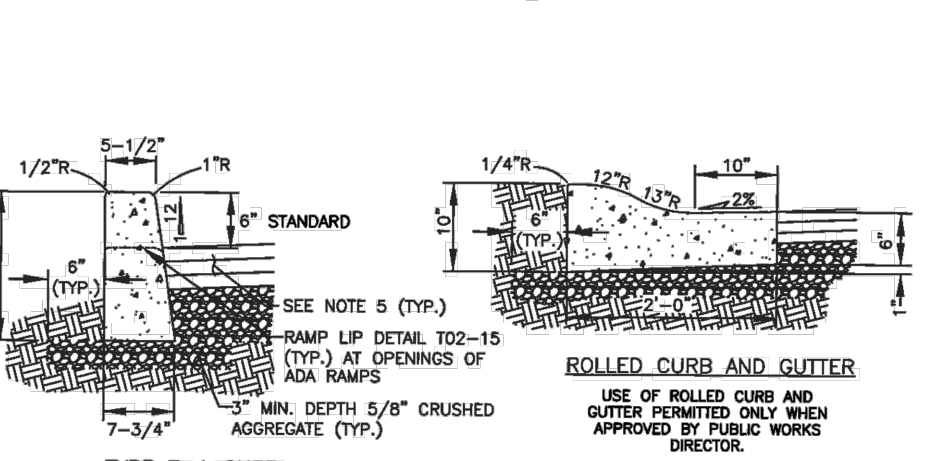
THIS LINE IS 1" LONG AT THE CORRECT SCALE

BELMONT LOOP
TRANSPORTATION AND SURFACING PLAN
1838 FRANKLIN STREET
WOODLAND WA 98674

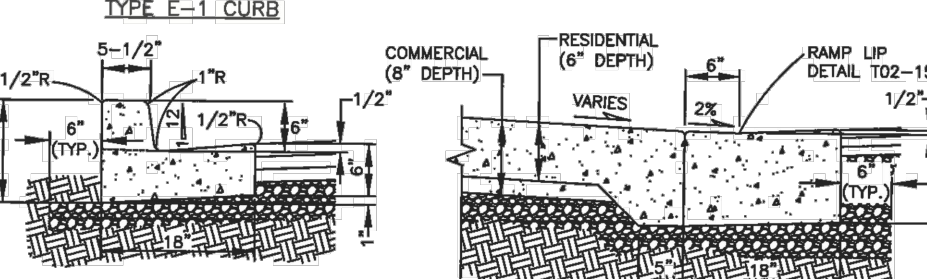
REVISION

5

5 / 6



TYPE E-1 CURB

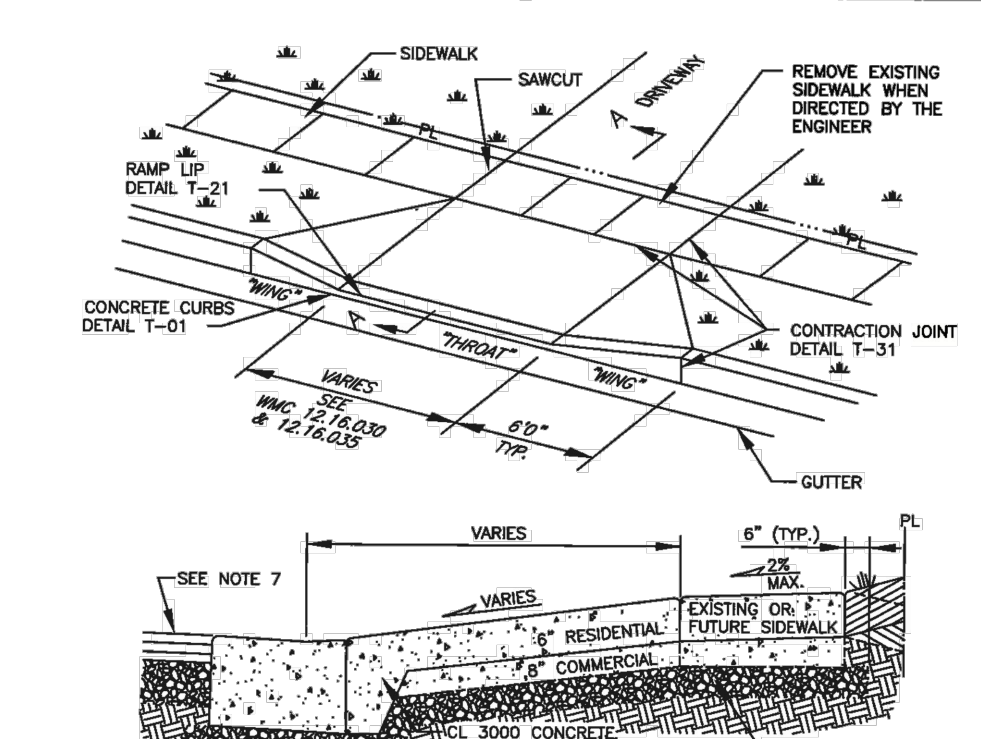


TYPE A-1 CURB AND GUTTER

- NOTES:
1. CONCRETE SHALL BE 3000 PSI MIN. (CL 3000), 3-1/2" SLUMP (MAX).
 2. CURBS ADJACENT TO PAVEMENT OR SIDEWALK SHALL HAVE CONSTRUCTION JOINTS TO MATCH EXISTING PATTERNS. 3/8" EXPANSION JOINTS SHALL BE PLACED ON BOTH SIDES OF CATCH BASINS. AT TOPS OF DRIVEWAYS, ALL CHANGES IN DIRECTION, AND AS DIRECTED BY THE INSPECTOR. CONTRACTION JOINTS TO BE PLACED AT 15' MAXIMUM SPACING.
 3. FOR CURB DROPS AT ADA RAMP, SEE RAMP LIP DETAIL T-21.
 4. COMPACT SUBGRADE AND AGGREGATE TO 95% MAXIMUM DRY DENSITY (3" MIN. DEPTH).
 5. SEE PAVEMENT RESTORATION/WIDENING AT CURBS DETAIL T-30.
 6. CURB TO BE MEDIUM BROOM FINISHED, PARALLEL TO GUTTER LINE.
 7. WHERE RESTORATION EXISTING CURBS, ALL EXISTING EDGES SHALL BE SAWCUT.
 8. WHEN ATTACHED SIDEWALKS ARE USED WITH ROLLED CURB AND GUTTER, THICKENED SIDEWALKS (6" MIN) SHALL BE CONSTRUCTED UNDER THE SAME CONSTRUCTION CONTRACT.

CONCRETE CURBS

APPROVED	REVISIONS	DATE	DRAWN	DESIGNED	T-01
<i>Bart Stapp</i>		5/8/19			
PUBLIC WORKS DIRECTOR		DATE			

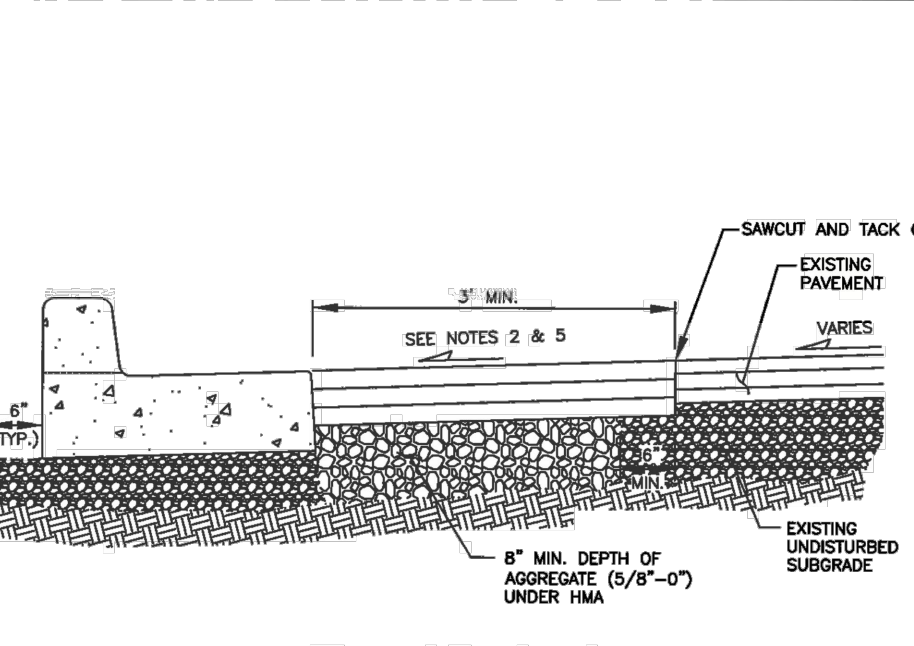


NOTES:

1. CONCRETE SHALL BE 3000 PSI MIN. (CL 3000), 3-1/2" SLUMP (MAX), MEDIUM BROOM FINISH PARALLEL TO DRIVEWAY CENTERLINE.
2. TO BE USED WHERE CURB AND SIDEWALK ARE SEPARATED BY A PLANTER STRIP.
3. COMMERCIAL DRIVEWAYS REQUIRE 6" CONCRETE WITH REINFORCING STEEL (E6 - W2.9x2.9 WWF, MIN.) 1/2" COVER FROM BOTTOM OF SLAB. RESIDENTIAL DRIVEWAYS REQUIRE 6" CONCRETE.
4. COMPACT SUBGRADE AND AGGREGATE TO 95% OF MAXIMUM DRY DENSITY (3" MIN. DEPTH).
5. DRIVEWAYS EXCEEDING 15' IN TOTAL WIDTH SHALL HAVE ADDITIONAL LONGITUDINAL JOINTS AS DIRECTED. JOINT SPACING SHALL NOT EXCEED 15'. SEE CONCRETE JOINTS DETAIL T-31.
6. EXISTING CURB SHALL BE REMOVED TO EXISTING JOINT OR SAWCUT SUCH THAT 3" MIN. OF NEW CURB IS CONSTRUCTED ADJACENT TO NEW DRIVEWAY. HORIZONTAL CUTTING OF EXISTING CONCRETE ALLOWED SUBJECT TO PUBLIC WORKS DIRECTOR APPROVAL.
7. SEE PAVEMENT RESTORATION/WIDENING AT CURB DETAIL T-30 WHEN CUTTING EXISTING CURB.
8. ALL EXISTING EDGES SHALL BE SAWCUT.
9. STRUCTURAL SECTION OF DRIVEWAY TO BE EXTENDED THROUGH SIDEWALK AREA.
10. 3" WING MIN. FOR RESIDENTIAL STREET.
11. 40° ANGLE FOR WINGS ON ARTERIAL STREETS.
12. NO WATER METERS IN DRIVEWAY APPROACH OR WING.

DRIVEWAY WITH DETACHED SIDEWALK

APPROVED	REVISIONS	DATE	DRAWN	DESIGNED	T-03
<i>Bart Stapp</i>		5/8/19			
PUBLIC WORKS DIRECTOR		DATE			



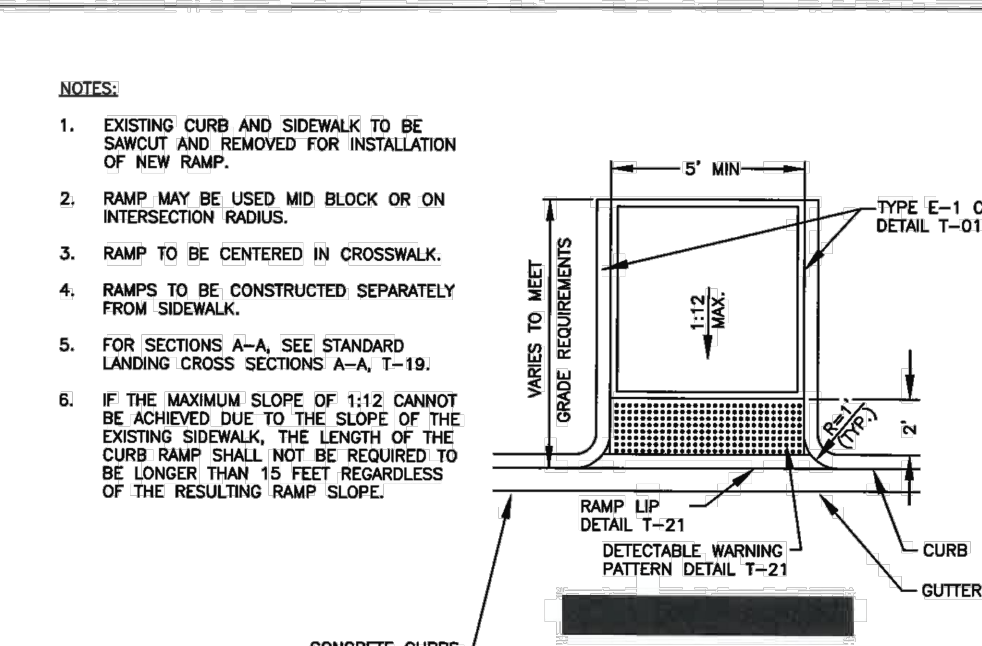
TYPE A-1 CURB AND GUTTER

NOTES:

1. SEE CONCRETE CURBS DETAIL T-01 FOR CURBS.
2. PAVEMENT SECTION SHALL BE APPROVED IN ADVANCE AND COMPLETED TO THE SATISFACTION OF THE PUBLIC WORKS DIRECTOR.
3. THE EDGES OF ALL EXISTING ASPHALT SURFACES SHALL BE CLEANED AND A TACK COAT SHALL BE APPLIED PER THE STANDARD SPECIFICATIONS. ALL JOINTS SHALL BE SEALED WITH CRS-1 AND SANDED.
4. COMPACT SUBGRADE, CRUSHED AGGREGATE AND PAVEMENT TO 95% OF MAXIMUM DRY DENSITY.
5. HOT MIX ASPHALT SHALL BE (DMA) CLASS 3" PG 64-22 3 TO 30 ESAL MIX DESIGN. MINIMUM LIFT THICKNESS IS 0.15" MAXIMUM LIFT THICKNESS IS 0.30" FOR BASE COURSE AND 0.25" FOR SURFACE COURSE.
6. MATCH EXISTING PAVEMENT SLOPE. NO STEEPER THAN 4% WITHOUT SPECIFIC CITY APPROVAL.
7. SAWCUT AND REMOVE EXISTING FAILING ASPHALT PAVEMENT.
8. SAWCUT AND REMOVE EXISTING ASPHALT PAVEMENT. MINIMUM 6" WIDTH, MAXIMUM HALF STREET WIDTH.
9. 3" MIN. PAVEMENT RESTORATION AROUND MANHOLE.

PAVEMENT RESTORATION/WIDENING AT CURBS

APPROVED	REVISIONS	DATE	DRAWN	DESIGNED	T-30
<i>Bart Stapp</i>		5/8/19			
PUBLIC WORKS DIRECTOR		DATE			



PERPENDICULAR RAMP

NOTES:

1. EXISTING CURB AND SIDEWALK TO BE SAWCUT AND REMOVED FOR INSTALLATION OF NEW RAMP.
2. RAMP MAY BE USED MD BLOCK OR ON INTERSECTION MADJUS.
3. RAMP TO BE CENTERED IN CROSSWALK.
4. RAMP TO BE CONSTRUCTED SEPARATELY FROM SIDEWALK.
5. FOR SECTIONS A-A SEE STANDARD LANDING CROSS SECTIONS A-A, T-18.
6. IF THE MAXIMUM SLOPE OF 1:12 CANNOT BE ACHIEVED DUE TO THE SLOPE OF THE EXISTING SIDEWALK, THE LENGTH OF THE CURB RAMP SHALL NOT BE REQUIRED TO BE LONGER THAN 15 FEET REGARDLESS OF THE RESULTING RAMP SLOPE.

PERPENDICULAR RAMP

APPROVED	REVISIONS	DATE	DRAWN	DESIGNED	T-17
<i>Bart Stapp</i>		5/8/19			
PUBLIC WORKS DIRECTOR		DATE			

SET DATE: 9/29/2021