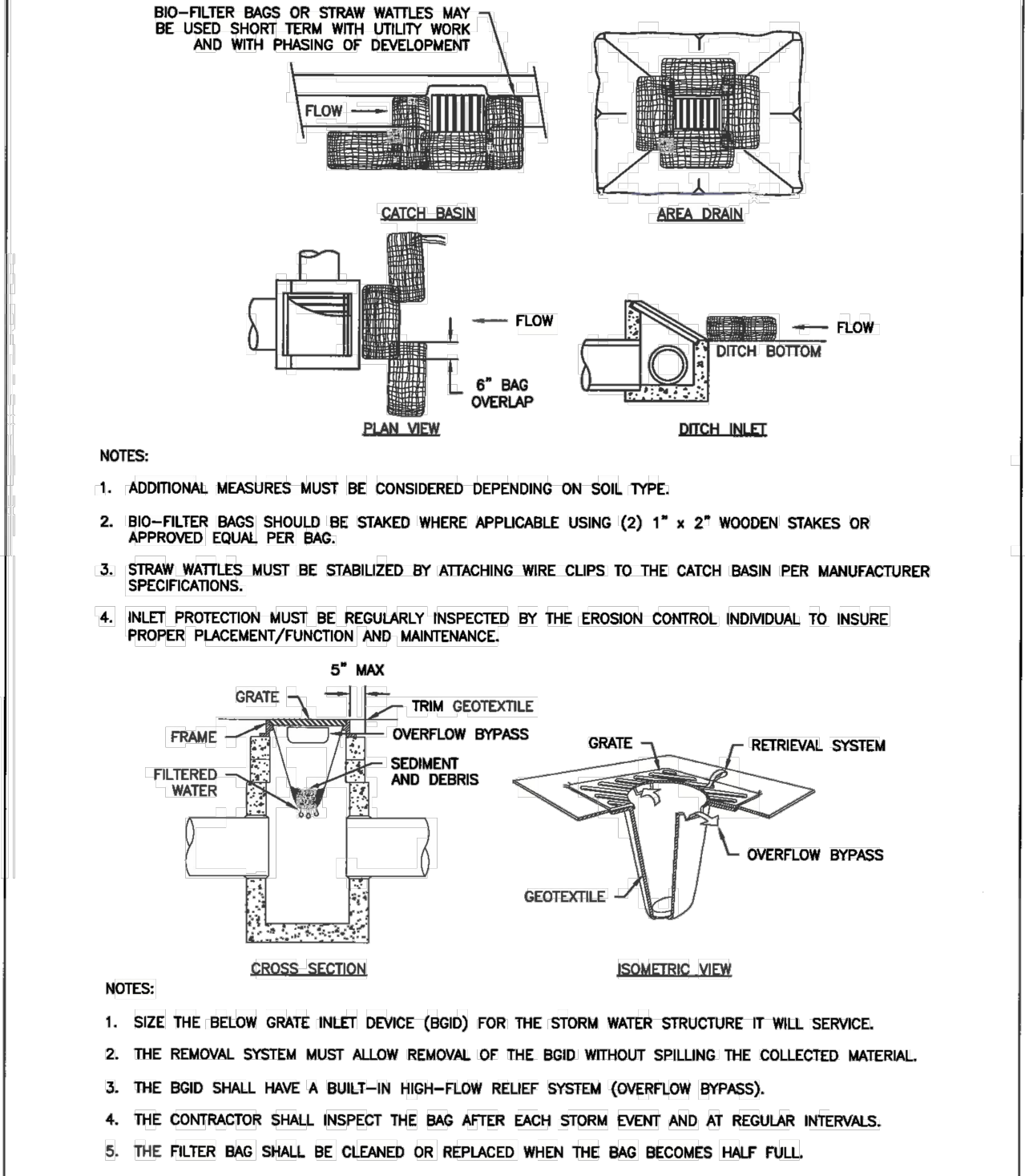
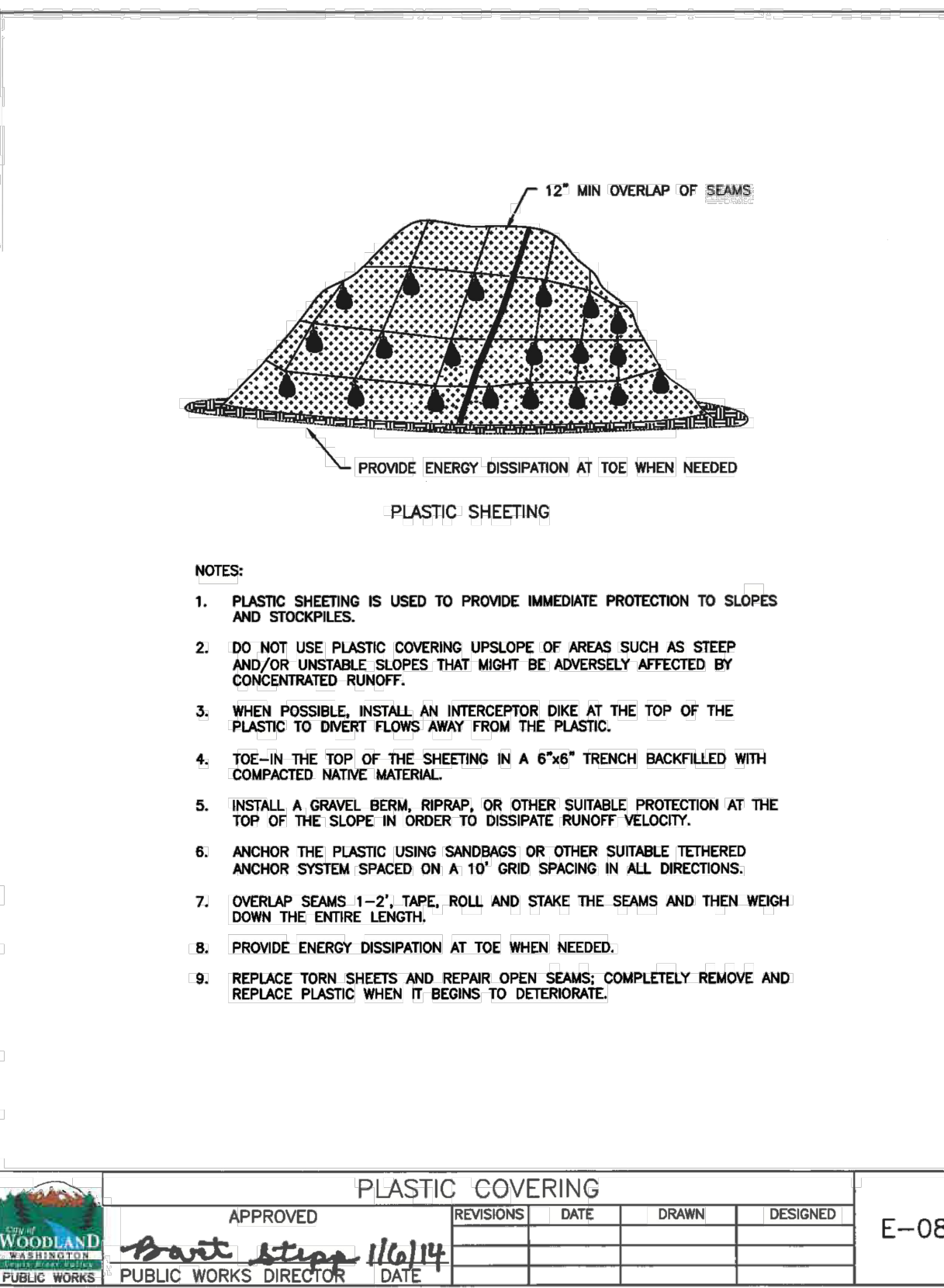
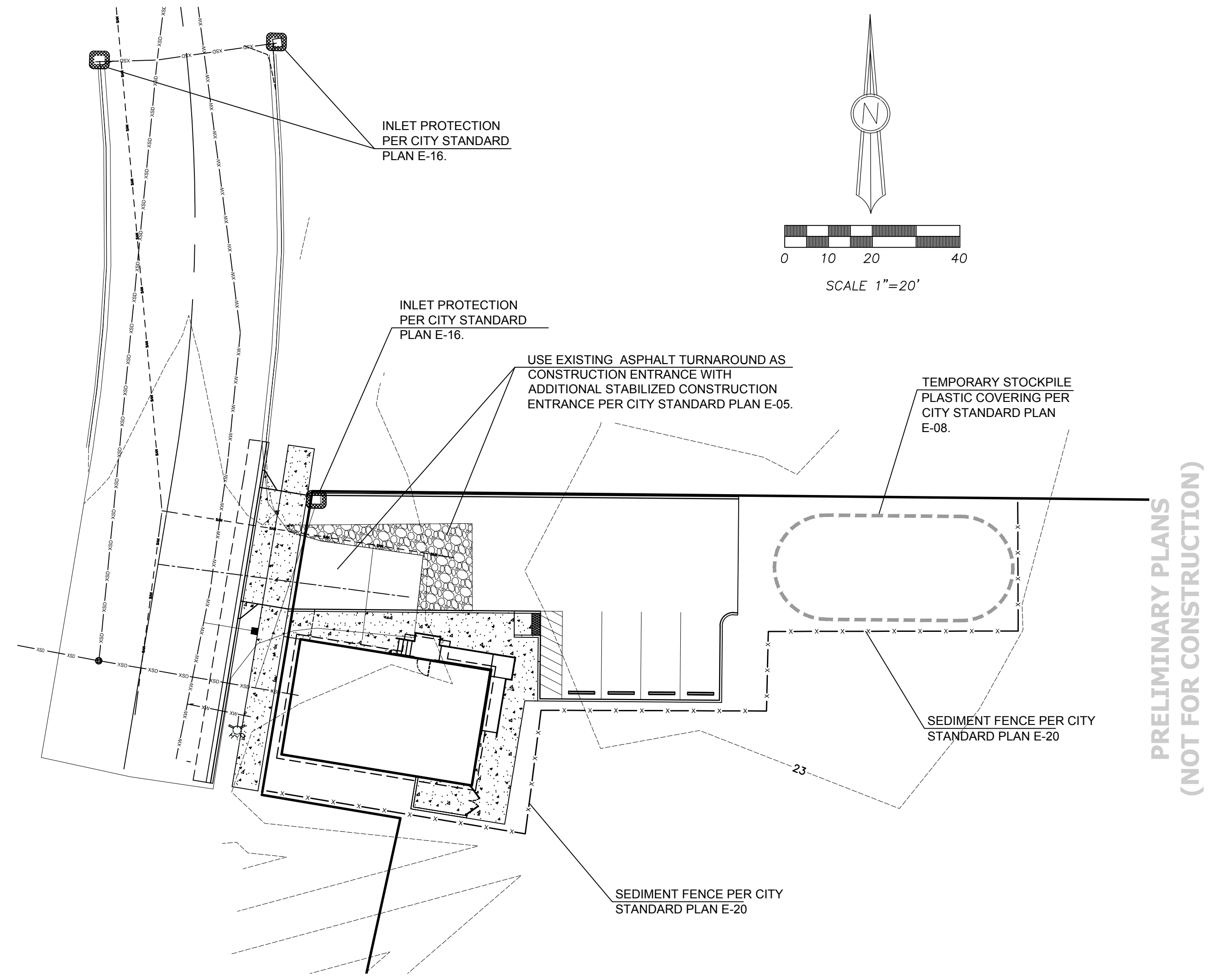


- GENERAL EROSION PREVENTION & SEDIMENT CONTROL NOTES**
1. ALL EROSION AND SEDIMENT CONTROL MEASURES SHALL BE IN PLACE AND IN WORKING CONDITION PRIOR TO ANY LAND DISTURBING ACTIVITY CAUSED BY CLEARING OR BROWNE EXCAVATION AND SEDIMENT CONTROL MEASURES SHALL BE APPROVED BY THE CITY EROSION CONTROL SPECIALIST PRIOR TO THE COMMENCEMENT OF WORK. THE CONTRACTOR SHALL CALL FOR AN ON-SITE INSPECTION WHEN EROSION AND SEDIMENT CONTROL MEASURES ARE IN PLACE AND PRIOR TO COMMENCEMENT OF WORK.
 2. THE EROSION AND SEDIMENT CONTROL MEASURES SHALL BE SITED, DESIGNED AND CONSTRUCTED IN ACCORDANCE WITH THE REQUIREMENTS IN THE CITY OF WOODLAND'S LATEST STANDARD SIGNALS AND THE WASHINGTON STATE DEPARTMENT OF ECOLOGY STORMWATER MANUAL FOR WESTERN WASHINGTON. WHERE THE CITY OF WOODLAND STANDARD REQUIREMENTS SHALL TAKE PRECEDENCE.
 3. THE DEVELOPER IS RESPONSIBLE FOR MAINTAINING EROSION PREVENTION AND SEDIMENT CONTROL MEASURES DURING AND AFTER INSTALLATION OF ALL UTILITY WORK ASSOCIATED WITH UTILITY TRENCHES.
 4. PRIOR TO ANY SITE EXCAVATION, ALL STORM DRAINAGE INLETS SHALL BE PROTECTED DOWN SLOPE FROM ANY DISTURBED OR CONSTRUCTION AREAS PER THE STANDARD DETAILS TO PREVENT SEDIMENT FROM ENTERING THE STORM DRAINAGE SYSTEM PRIOR TO PERMANENT STABILIZATION OF THE DISTURBED AREAS. CLEAN THE FILTER FABRIC AS NECESSARY TO MAINTAIN DRAINAGE. REMOVE FILTERS AND CLEAN CATCH BASINS FOLLOWING COMPLETION OF STORMING.
 5. THE CONTRACTOR SHALL NOT ALLOW SEDIMENT OR DEBRIS TO ENTER INTO EXISTING PIPES, CATCH BASINS OR INFILTRATION SYSTEMS.
 6. NEWLY CONSTRUCTED OR MODIFIED INLETS AND CATCH BASINS ARE TO BE PROTECTED IMMEDIATELY UPON INSTALLATION.
 7. TEMPORARY SEEDING AND MULCHING OF FULL SLOPES AND DIVERSION DICES SHALL BE COMPLETED WITHIN ONE WEEK AFTER ROUGH GRADING.
 8. ALL EXPOSED AND UNWORKED SOILS SHALL BE STABILIZED BY THE APPROPRIATE BEST MANAGEMENT PRACTICES (BMP), DURING THE PERIOD FROM OCTOBER 1 TO APRIL 30 NO SOIL SHALL BE EXPOSED FOR MORE THAN TWO (2) DAYS. FROM MAY 1 TO SEPTEMBER 30 NO SOIL SHALL BE EXPOSED FOR MORE THAN SEVEN (7) DAYS.
 9. MATERIAL STOCKPILES ARE TO BE PROTECTED BY THE FOLLOWING MEANS:
TEMPORARY: COVER PILES WITH TARP OR PLASTIC. EXISTING REQUIRED WITH CONCRETE BLOCKS, LAMBER OR TREES.
PERMANENT: COVER PILES WITH TARP OR PLASTIC. EXISTING REQUIRED WITH CONCRETE BLOCKS, LAMBER OR TREES. STOCKPILES SHALL BE SURROUNDED WITH EROSION CONTROL FILTER FABRIC FENCES UNTIL SOIL SURFACE IS STABILIZED WITH RESEEDING.
 10. THE CONTRACTOR SHALL MAINTAIN ON SITE A WRITTEN DAILY LOG OF EROSION CONTROL, BMP MAINTENANCE.
 11. IF THE CITY INSPECTOR OR ENGINEER HAS EVIDENCE OF POOR CONSTRUCTION PRACTICES OR IMPROPER EROSION PREVENTION BMP, STATIONS AND/OR A STOP WORK ORDER SHALL BE ISSUED. URGENT PROTECTIVE MEASURES HAVE BEEN TAKEN AND APPROVED BY THE CITY OF WOODLAND, IF THE BMP APPLIED TO SITE ARE INSUFFICIENT TO PREVENT SEDIMENT FROM REACHING WATER BODIES, ADJACENT PROPERTIES, OR PUBLIC RIGHT-OF-WAY, THEN THE PUBLIC WORKS DIRECTOR SHALL REQUIRE ADDITIONAL BMP.

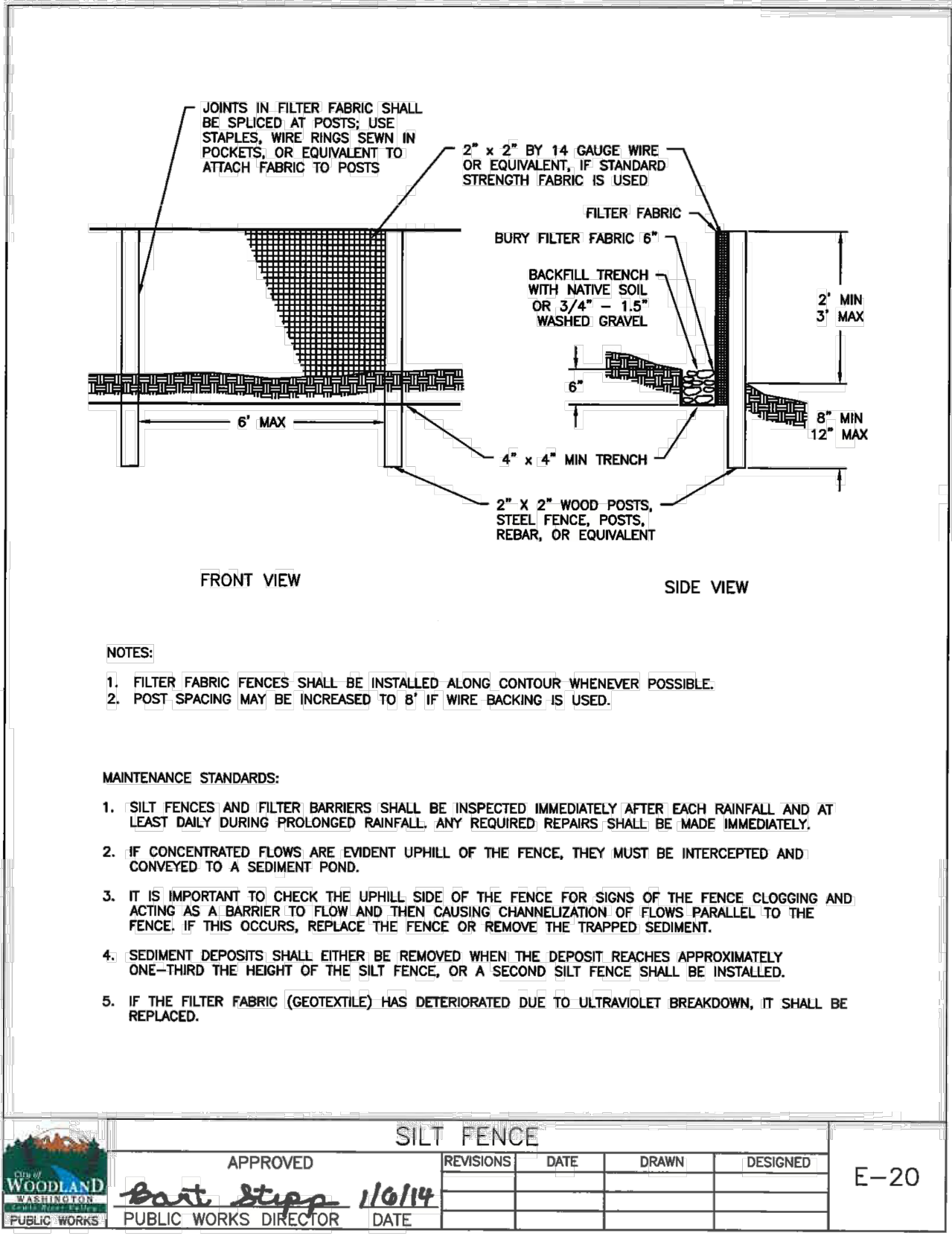
APPROVED	REVISIONS	DATE	DRAWN	DESIGNED	E-03
<i>Paul Stepp 11/6/14</i>					
PUBLIC WORKS DIRECTOR					



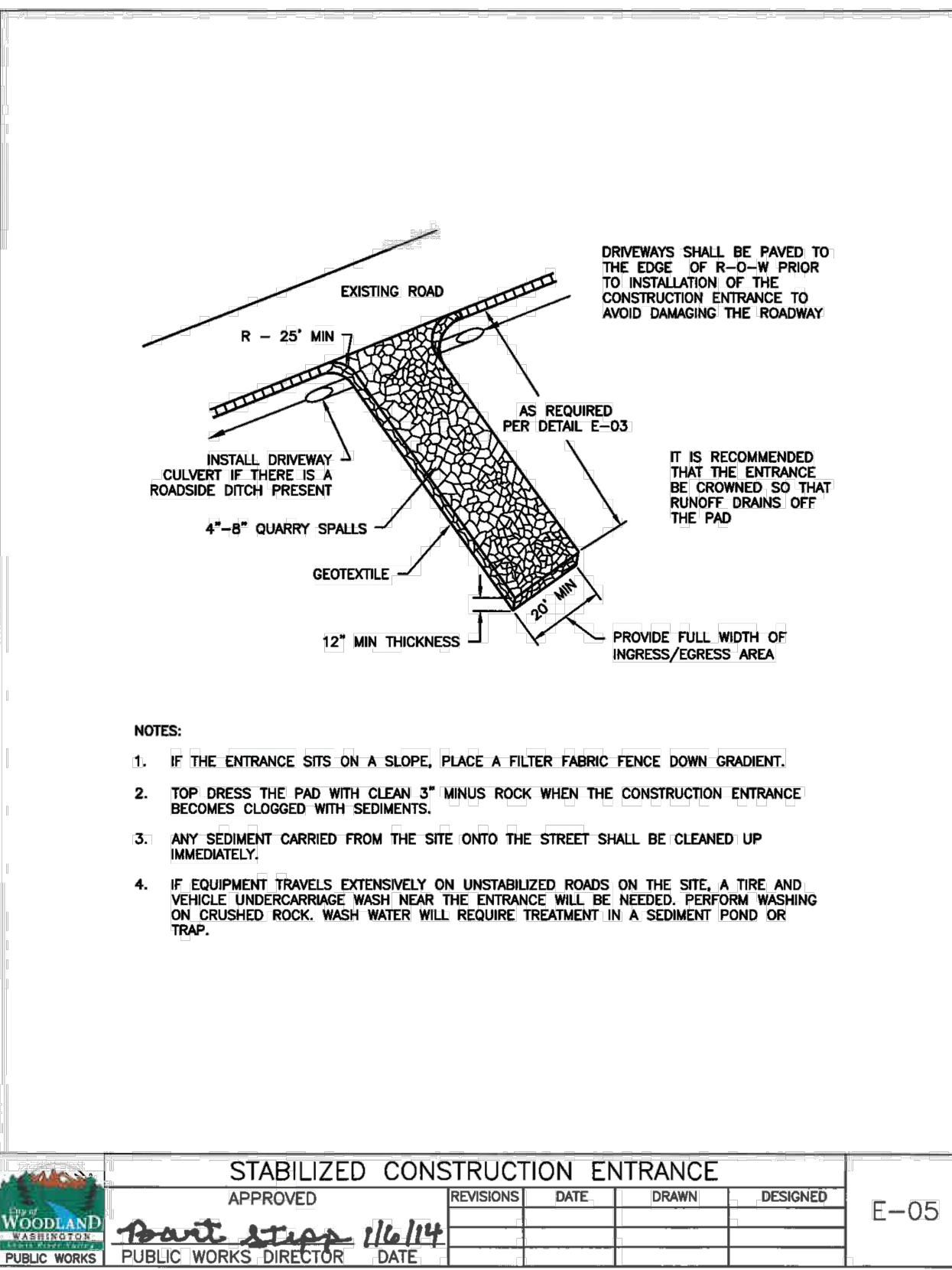
APPROVED	REVISIONS	DATE	DRAWN	DESIGNED	E-16
<i>Paul Stepp 11/6/14</i>					
PUBLIC WORKS DIRECTOR					



APPROVED	REVISIONS	DATE	DRAWN	DESIGNED	E-08
<i>Paul Stepp 11/6/14</i>					
PUBLIC WORKS DIRECTOR					



APPROVED	REVISIONS	DATE	DRAWN	DESIGNED	E-20
<i>Paul Stepp 11/6/14</i>					
PUBLIC WORKS DIRECTOR					



APPROVED	REVISIONS	DATE	DRAWN	DESIGNED	E-05
<i>Paul Stepp 11/6/14</i>					
PUBLIC WORKS DIRECTOR					

PRELIMINARY PLANS (NOT FOR CONSTRUCTION)

CARPENTER ENGINEERING, INC.
Civil Engineering & Consulting
13501 5th Avenue, L.S. carpenter@comcast.net
30038 DISTRICT OF COLUMBIA PROFESSIONAL SEAL

CEI PROJECT NO: 21-001
CONTRACT NO: -----

THIS LINE IS 1" LONG AT THE CORRECT SCALE

BELMONT LOOP
EROSION CONTROL PLAN
1838 FRANKLIN STRE
WOODLAND, WA 98674

3 / 6

REVISION	DESCRIPTION	DESIGNER	REVIEWER
0			