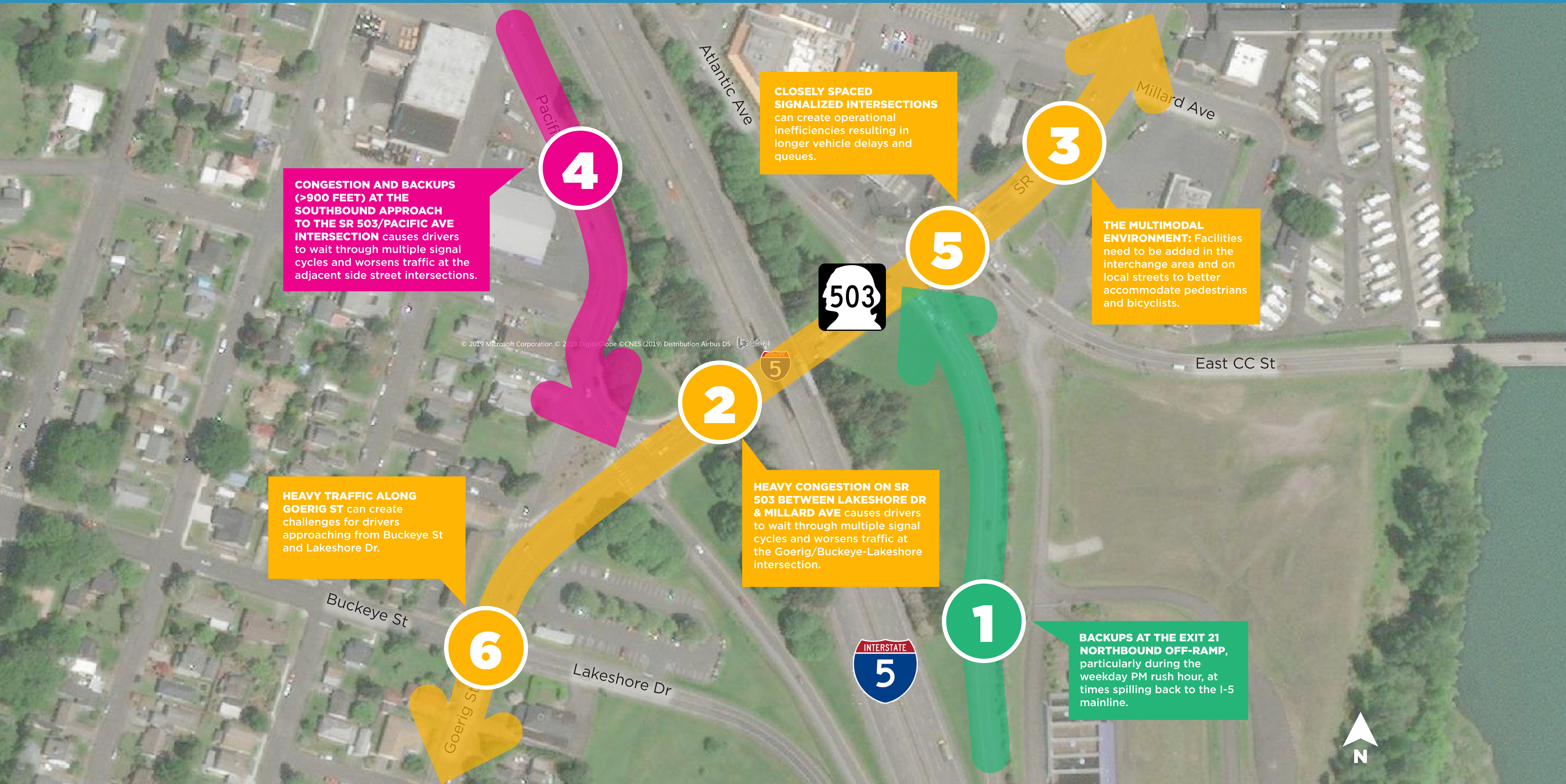
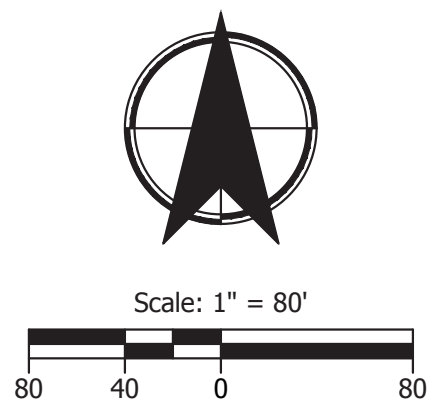
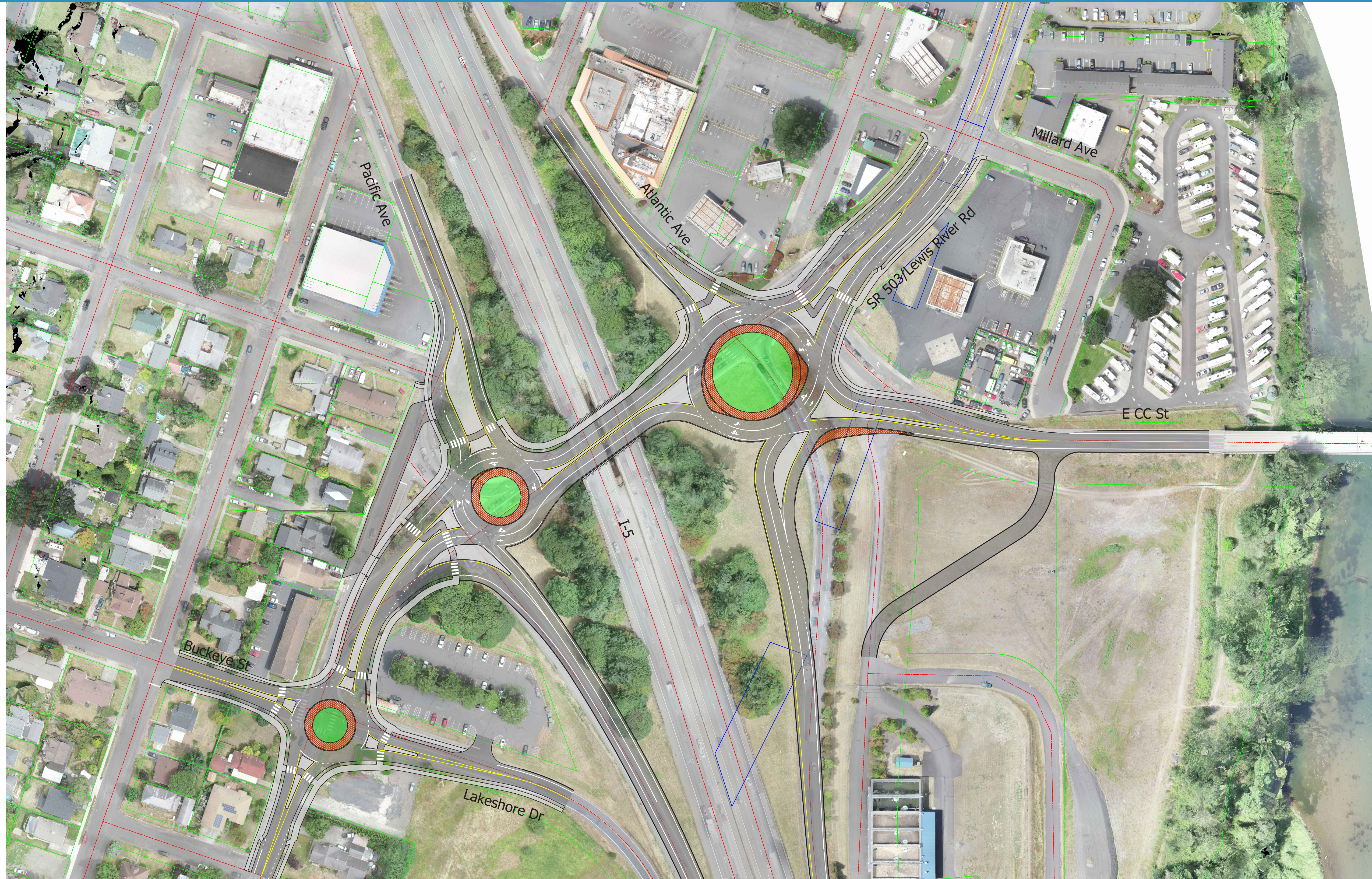


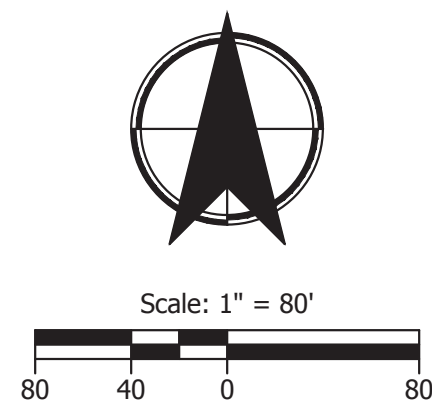
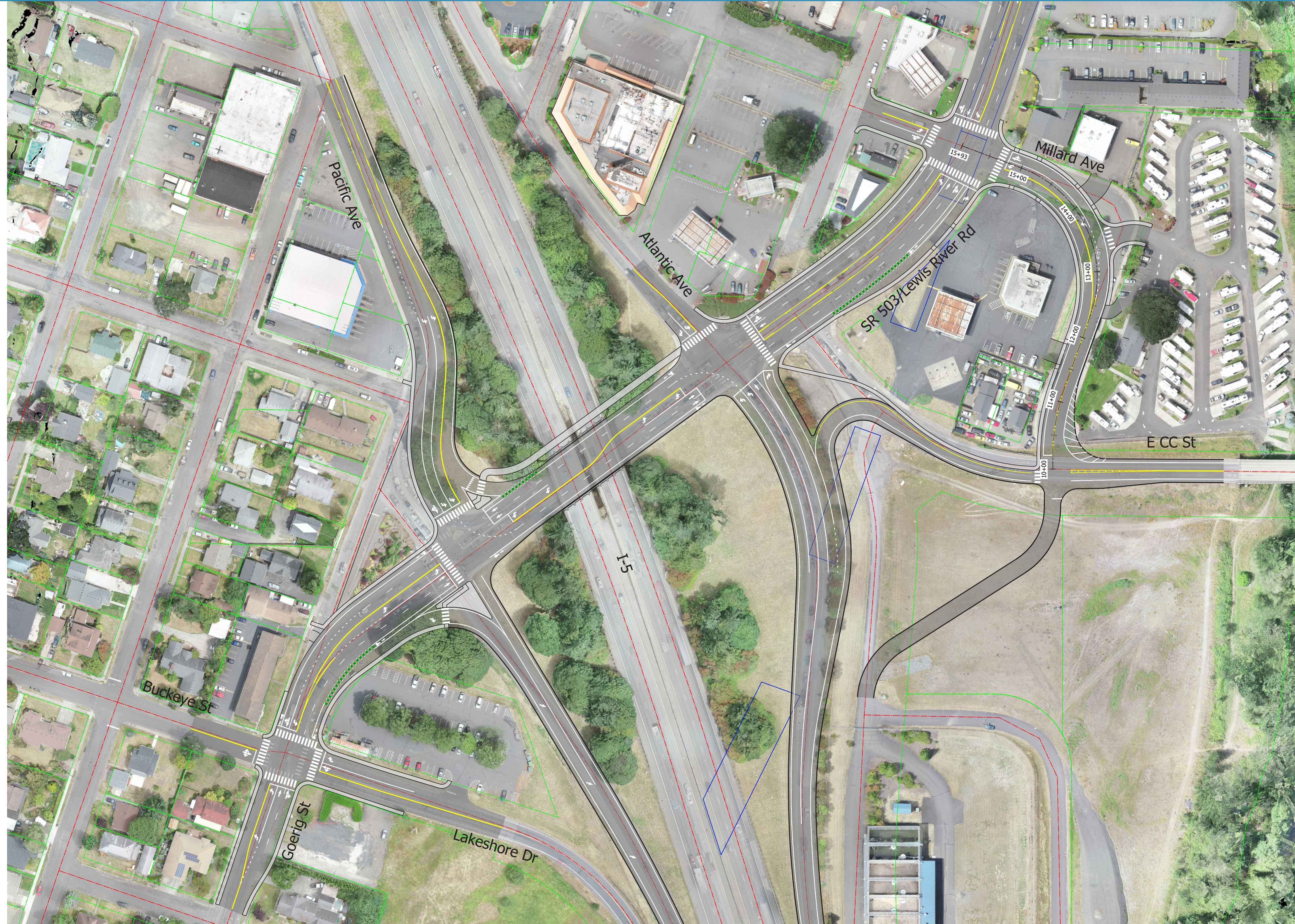
# Key Project Issues



# Roundabouts Concept



# Improved Traffic Signals Concept



# EXIT 21 INTERCHANGE IMPROVEMENTS



## PARTICIPATE

- » [City of Woodland](http://www.ci.woodland.wa.us) website: [www.ci.woodland.wa.us](http://www.ci.woodland.wa.us)
- » Planning Commission & City Council Meetings October - March (see [City website](#) for details)
- » Public Open House: February 13, 5:30-7:30 pm (200 E Scott Ave) (see [City website](#) for details)

## CONTACT

**Tracy Coleman**  
**Public Works Director**  
City of Woodland  
360-225-7999  
[ColemanT@ci.woodland.wa.us](mailto:ColemanT@ci.woodland.wa.us)

## THE PROJECT

The roadway system at the I-5/SR 503 (Exit 21) interchange experiences heavy congestion during weekday peak traffic hours, causing backups, delays, and waits through more than one signal cycle at intersections. Thanks to multiple rounds of study and planning over the years, the City of Woodland has received State of Washington funding to improve these persistent issues.

As population and development growth drive greater traffic demand, these issues will grow worse. The interchange will eventually become an obstacle to drivers trying to reach I-5 or cross town if they are not resolved.

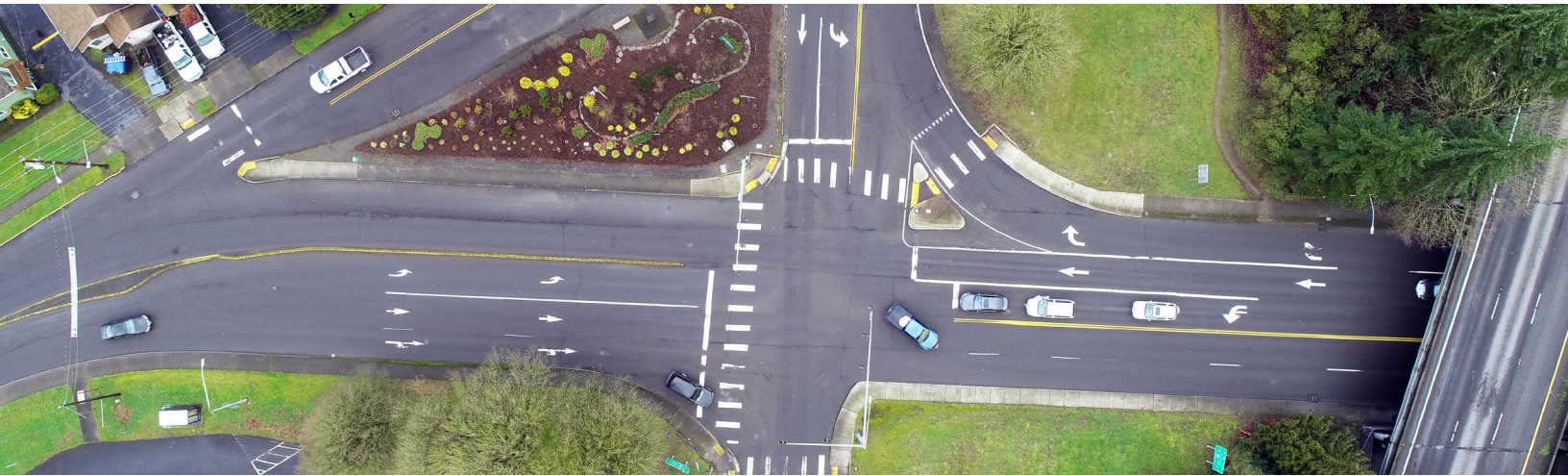
## WHY ARE THE IMPROVEMENTS NEEDED?

Safe, efficient travel throughout the I-5/SR 503 interchange area is vital to Woodland residents and businesses. The corridor is one of the city's major connection points to I-5, and SR 503 is a major link between its west and east sides. The area's population is expected to grow, sparking new development and placing significant stress on the already struggling interchange area.

## KEY PROJECT ISSUES

- 1 BACKUPS AT THE EXIT 21 NORTHBOUND OFF-RAMP**, particularly during the weekday PM rush hour, at times spilling back to the I-5 mainline.
- 2 HEAVY CONGESTION ON SR 503 BETWEEN LAKESHORE DR & MILLARD AVE** causes drivers to wait through multiple signal cycles and worsens traffic at the Goerig/Buckeye-Lakeshore intersection.
- 3 THE MULTIMODAL ENVIRONMENT:** Facilities need to be added in the interchange area and on local streets to better accommodate pedestrians and bicyclists.
- 4 CONGESTION AND BACKUPS (>900 FEET) AT THE SOUTHBOUND APPROACH TO THE SR 503/PACIFIC AVE INTERSECTION** causes drivers to wait through multiple signal cycles and worsens traffic at the adjacent side street intersections.





## DECISION PROCESS

- » **UNDERSTAND** history and existing / future interchange, roadway and other user needs
- » **EXPLORE** various tools / treatments for addressing identified needs
- » **DEVELOP** treatment solutions to meet each need
- » **DISCUSS** treatment trade-offs by asking key questions
- » **PRIORITIZE** preferred improvements within the context of City of Woodland, WSDOT, and CWCOC priorities
- » **SELECT** the preferred alternative to move into implementation

## SCHEDULE

