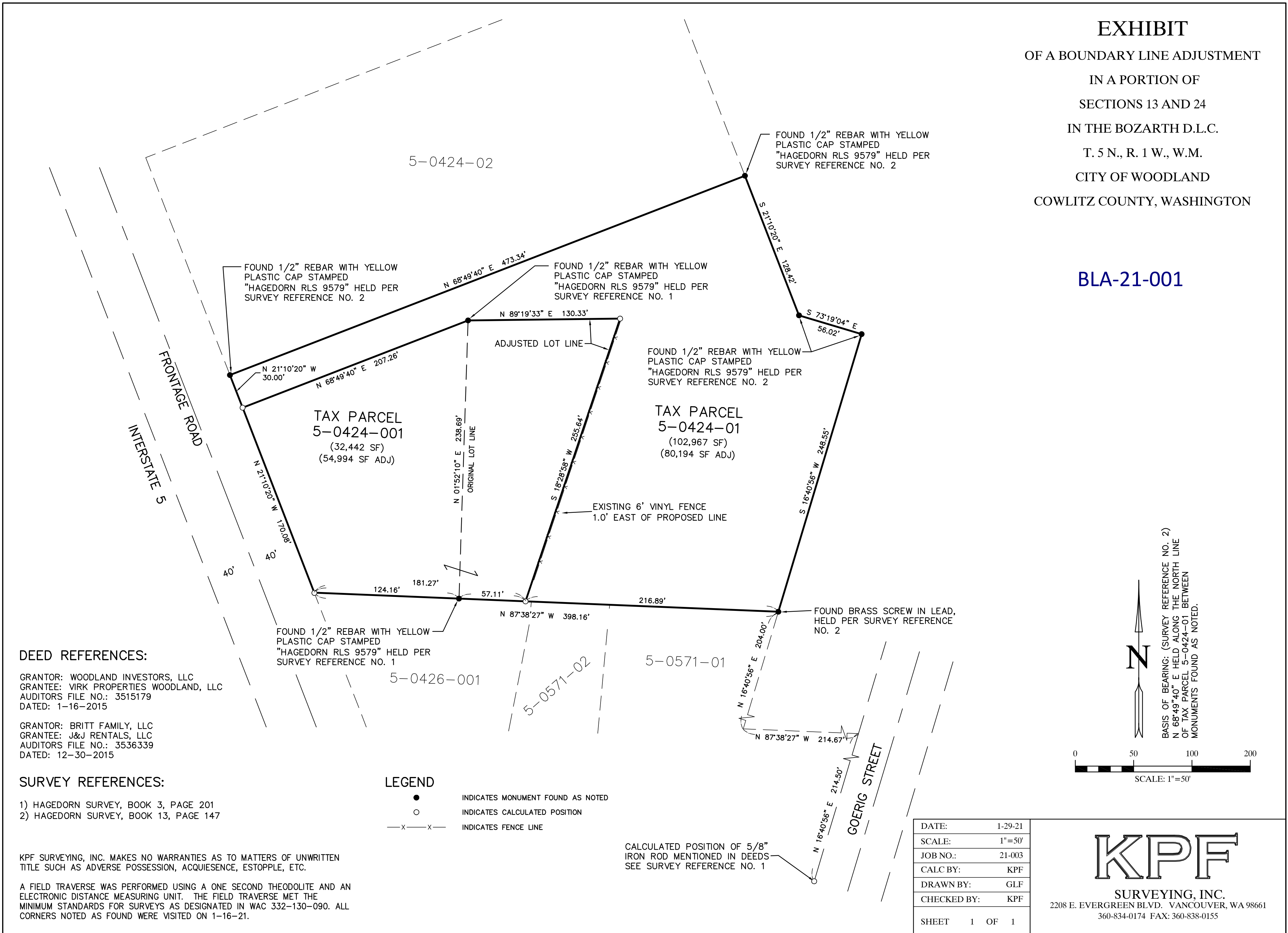


EXHIBIT
 OF A BOUNDARY LINE ADJUSTMENT
 IN A PORTION OF
 SECTIONS 13 AND 24
 IN THE BOZARTH D.L.C.
 T. 5 N., R. 1 W., W.M.
 CITY OF WOODLAND
 COWLITZ COUNTY, WASHINGTON

BLA-21-001



DEED REFERENCES:

GRANTOR: WOODLAND INVESTORS, LLC
 GRANTEE: VIRK PROPERTIES WOODLAND, LLC
 AUDITORS FILE NO.: 3515179
 DATED: 1-16-2015

GRANTOR: BRITT FAMILY, LLC
 GRANTEE: J&J RENTALS, LLC
 AUDITORS FILE NO.: 3536339
 DATED: 12-30-2015

SURVEY REFERENCES:

- 1) HAGEDORN SURVEY, BOOK 3, PAGE 201
- 2) HAGEDORN SURVEY, BOOK 13, PAGE 147

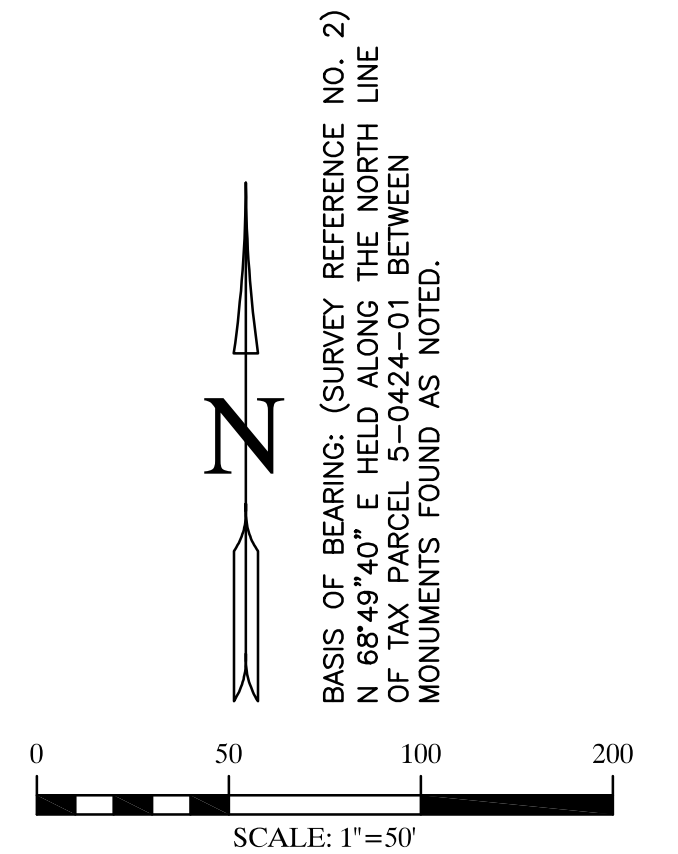
KPF SURVEYING, INC. MAKES NO WARRANTIES AS TO MATTERS OF UNWRITTEN TITLE SUCH AS ADVERSE POSSESSION, ACQUIESCENCE, ESTOPPLE, ETC.

A FIELD TRAVERSE WAS PERFORMED USING A ONE SECOND THEODOLITE AND AN ELECTRONIC DISTANCE MEASURING UNIT. THE FIELD TRAVERSE MET THE MINIMUM STANDARDS FOR SURVEYS AS DESIGNATED IN WAC 332-130-090. ALL CORNERS NOTED AS FOUND WERE VISITED ON 1-16-21.

LEGEND

- INDICATES MONUMENT FOUND AS NOTED
- INDICATES CALCULATED POSITION
- x—x— INDICATES FENCE LINE

CALCULATED POSITION OF 5/8" IRON ROD MENTIONED IN DEEDS SEE SURVEY REFERENCE NO. 1



DATE:	1-29-21
SCALE:	1"=50'
JOB NO.:	21-003
CALC BY:	KPF
DRAWN BY:	GLF
CHECKED BY:	KPF
SHEET	1 OF 1

KPF
 SURVEYING, INC.
 2208 E. EVERGREEN BLVD. VANCOUVER, WA 98661
 360-834-0174 FAX: 360-838-0155